

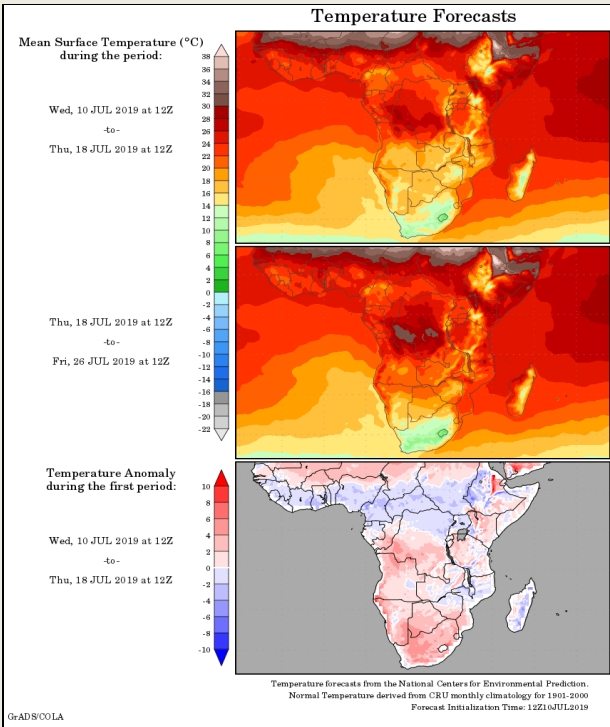
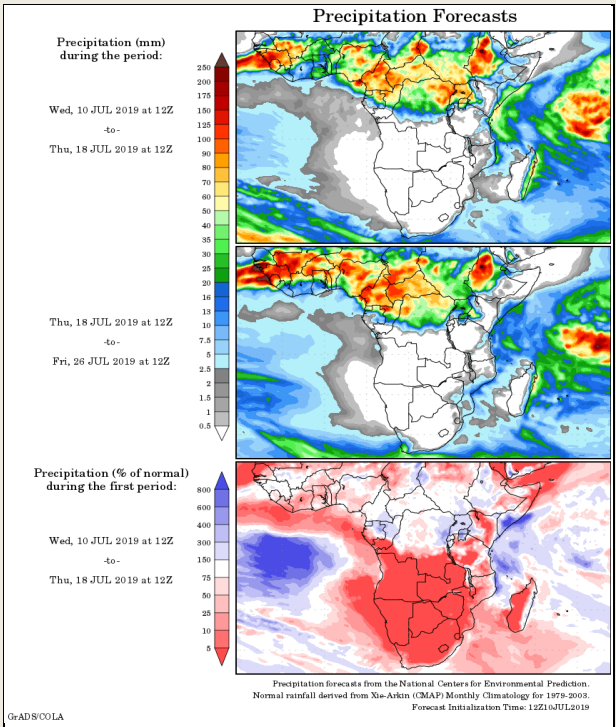
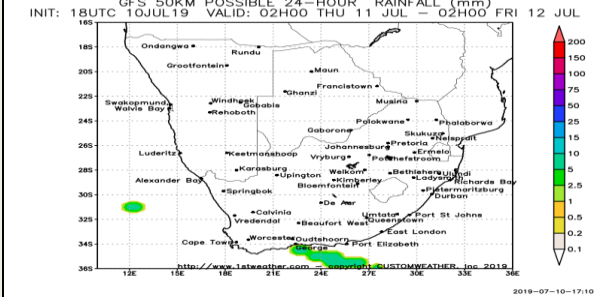
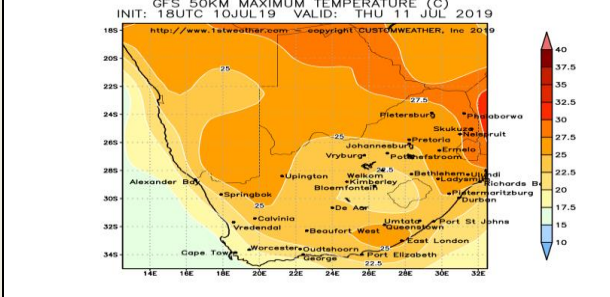
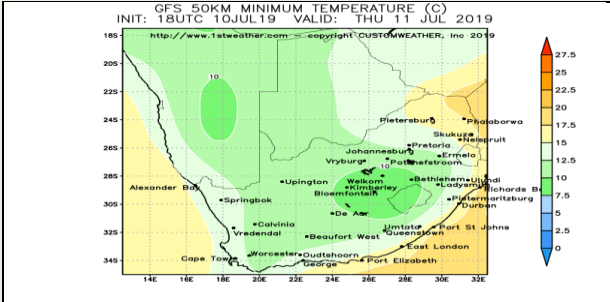
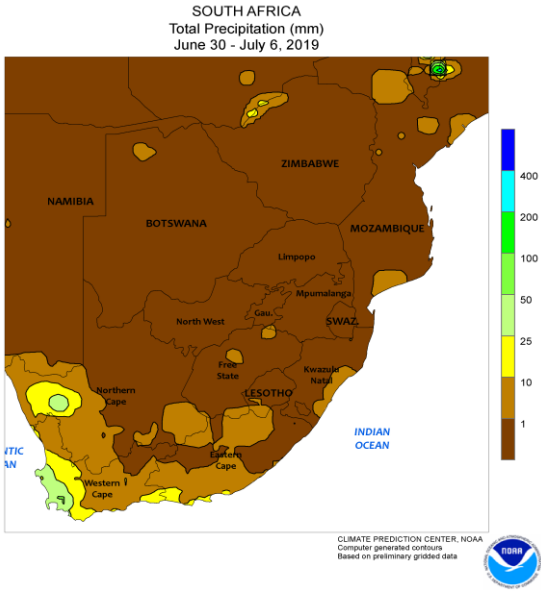


Weather Report
11 July 2019

South Africa - Weather

Any harvesting not yet complete will advance swiftly in the coming weeks

- Net drying will continue across South Africa during the next two weeks
- o Free State and neighboring areas are already critically dry
- o Winter wheat is dormant or semi-dormant and the dryness has not yet had a significant impact on the crops
- o However, timely rain will be needed once crop development begins
- o Recent rainfall helped improve the moisture profile for several of Western Cape's winter wheat areas
- o Additional rain is still needed to completely reverse the moisture deficits
- o Many areas are too dry to support ideal winter wheat growth

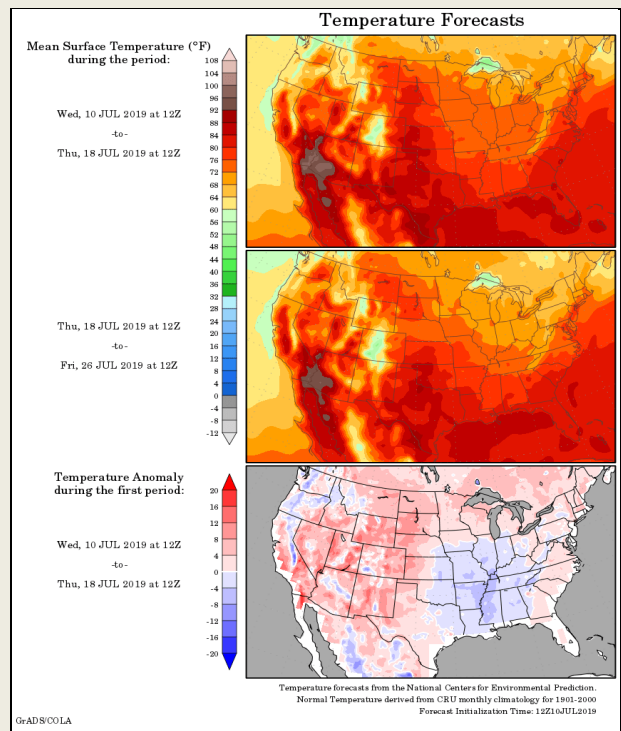
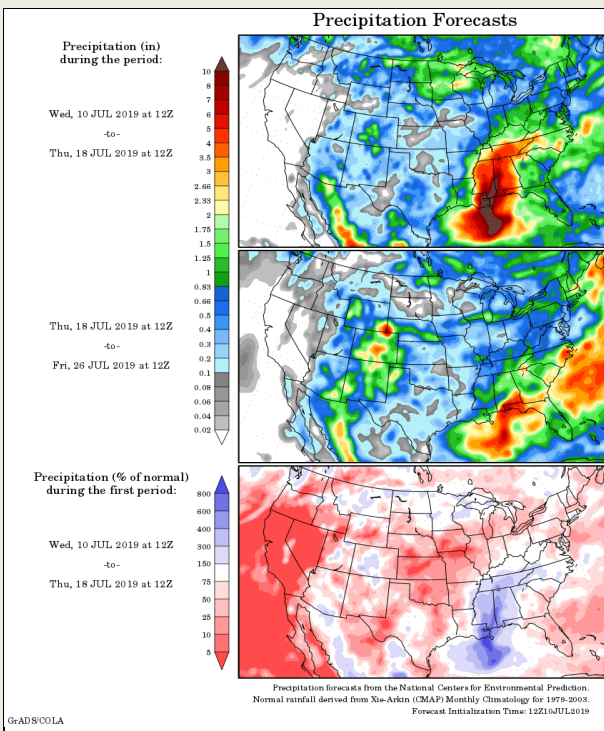
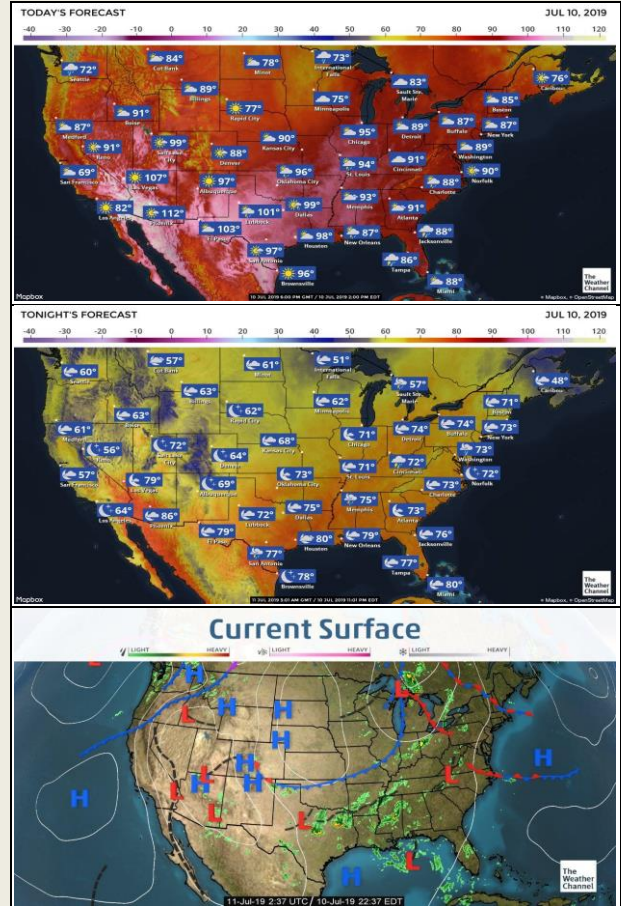
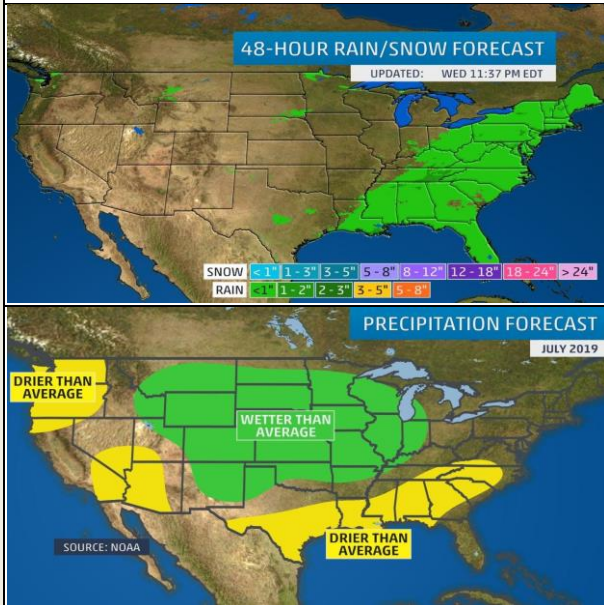


DISCLAIMER: This report has been prepared by GroCapital Financial Services Pty Ltd, a wholly owned subsidiary of AFGRI Operations Limited. It is provided to you for information purposes only. GROCAPITAL AND AFGRI hereby certify that the views expressed in this report were obtained from sources which GROCAPITAL AND AFGRI consider to be reliable. GROCAPITAL AND AFGRI do not make any representations or give any guarantees or warranties, expressed or implied, as to the correctness, accuracy or completeness of the report. Neither GROCAPITAL AND AFGRI, nor any affiliate, nor any of their respective officers, directors, partners or employees, shall assume any liability for any losses arising from errors or omissions in the opinions, forecasts or information, irrespective of whether there has been any negligence by GroCapital and AFGRI, their affiliate, or their respective officers, directors, partners or employees, regardless of whether such damages were foreseen or unforeseen. The information contained in this report is confidential and may be subject to legal privilege. This report is not intended to not should it be taken to create any legal relations or contractual relations.

United States of America - Weather

U.S. MIDWEST: A large part of the lower and eastern Midwest will continue to dry down during the next two weeks and some late-planted soybeans could be stressed and see declining yield potentials while crops that were planted near the normal dates should not be seriously impacted by the drying for at least the next two weeks. Temperatures will be warm as well and these conditions will favor corn and soybeans that were not planted late as the drying will induce greater root system development into the subsoil and the warm temperatures will accelerate growth rates. However, late-planted soybeans have a shortened growing season and if conditions become dry enough that the plant slows or stops its development for even a few days that could have a much more significant impact on yield potentials than what would occur if planting had occurred on time.

U.S. DELTA AND SOUTHEAST: A tropical depression is likely to form in the northeastern Gulf of Mexico later today before moving to the west across the northern Gulf and eventually making landfall on the coast of Louisiana or Texas. There is still time for the forecast track to change and the situation will be closely monitored.



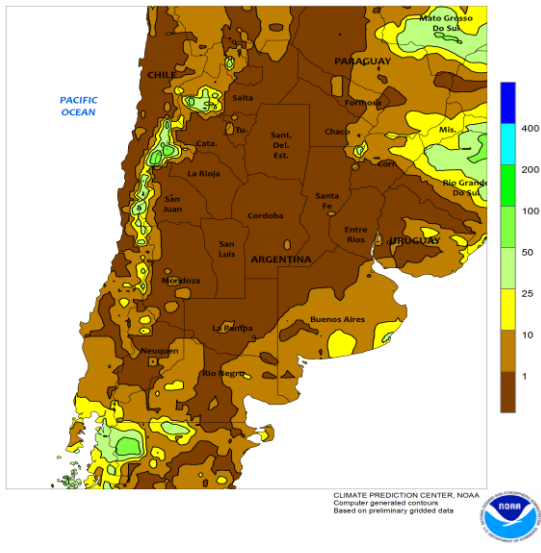
DISCLAIMER: This report has been prepared by GroCapital Financial Services Pty Ltd, a wholly owned subsidiary of AFGRI Operations Limited is provided to you for information purposes only. GROCAPITAL AND AFGRI hereby certify that the views expressed in this report were obtained from sources which GROCAPITAL AND AFGRI consider to be reliable. GROCAPITAL AND AFGRI do not make any representations or give any guarantees or warranties, expressed or implied, as to the correctness, accuracy or completeness of the report. Neither GROCAPITAL AND AFGRI, nor any of their respective officers, directors, partners or employees, shall assume any liability for any losses arising from errors or omissions in the opinions, forecasts or information, irrespective of whether there has been any negligence by GroCapital and AFGRI, their affiliate, or their respective officers, directors, partners or employees, regardless of whether such damages were foreseen or unforeseen. The information contained in this report is confidential and may be subject to legal privilege. This report is not intended to not should it be taken to create any legal relations or contractual relations.

South America - Weather

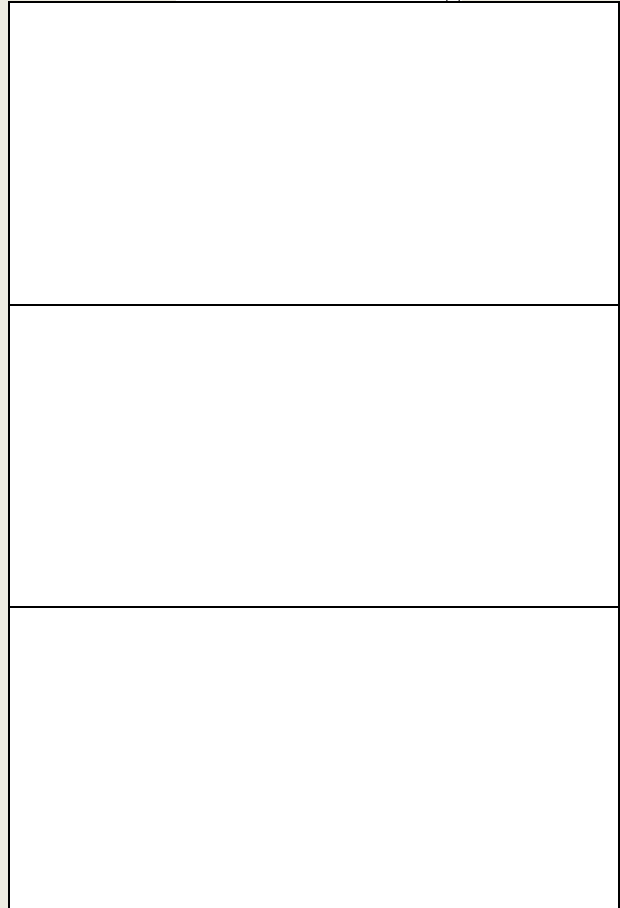
BRAZIL: A restricted rainfall pattern will occur most often in Brazil and Paraguay through the next two weeks with regular rounds of light showers in the northeast near the coast and an increase in rain in southern Brazil Friday into Sunday. Harvesting should advance well overall around the rain expected. Rain Friday into Sunday will be greatest from southern Paraguay into Rio Grande do Sul and Santa Catarina where most areas will receive 0.10-0.75" with local totals near 1.75". Lighter rain will surround the region and will extend to the north as far as Mato Grosso do Sul, Parana, and Sao Paulo during the early to middle part of next week.

ARGENTINA: Argentina will continue to see a restricted rainfall pattern most often through the next two weeks and planting of winter wheat and harvesting of summer crops should advance well overall. The drier areas in southwestern Argentina remain in need of greater rain to improve conditions for winter wheat and little to no rain of significance is expected there for at least the next ten days.

ARGENTINA
Total Precipitation (mm)
June 30 - July 6, 2019

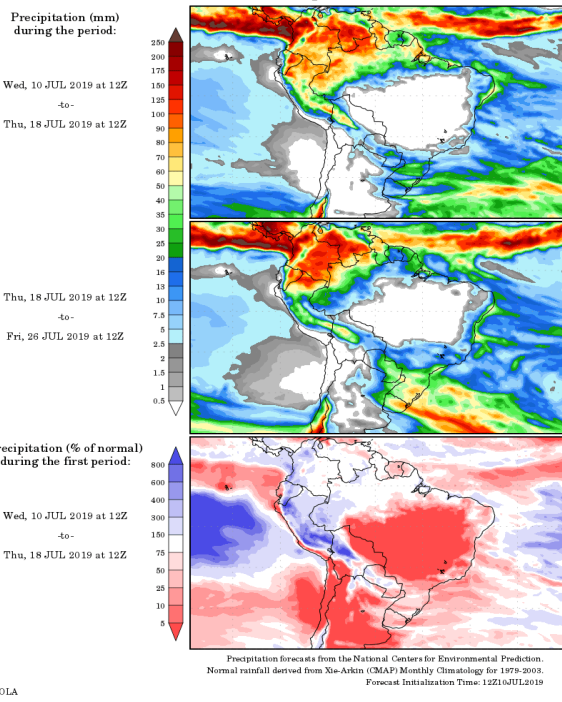


10 20 30 40 50 60 70 80 90 (%)

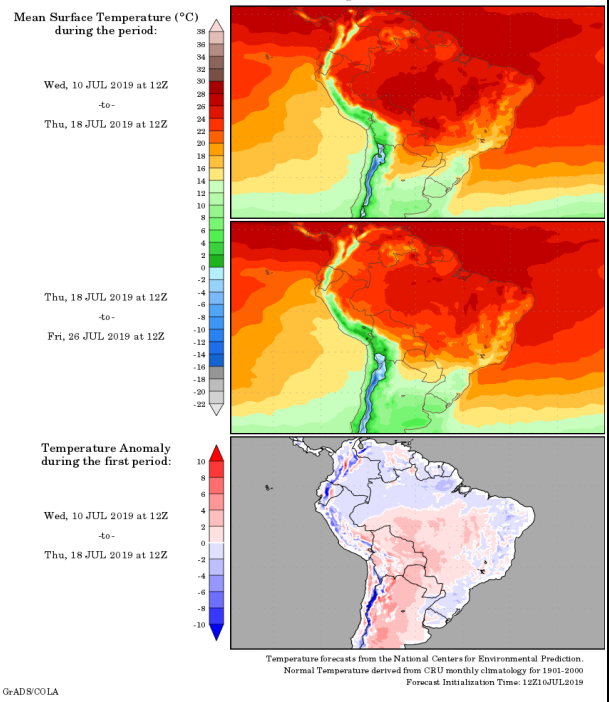


-20° -10° 0° 10° 20° 30° 40° (C)

Precipitation Forecasts



Temperature Forecasts

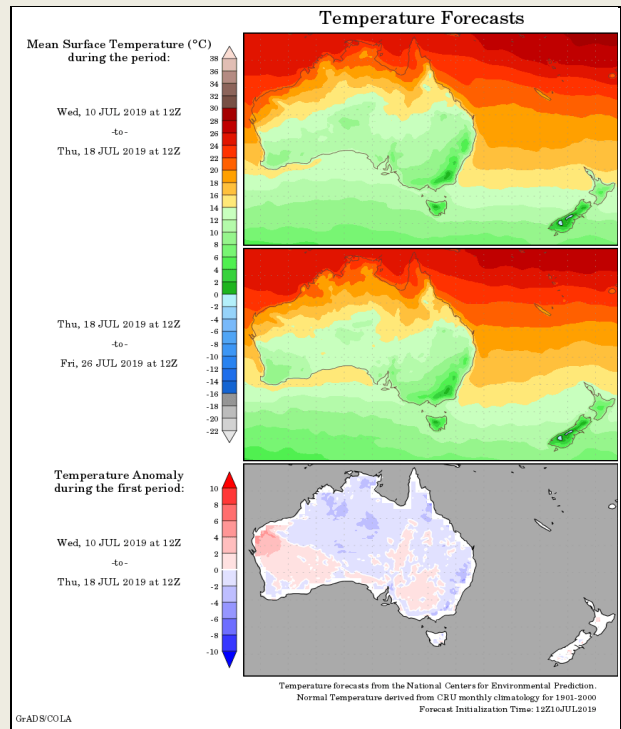
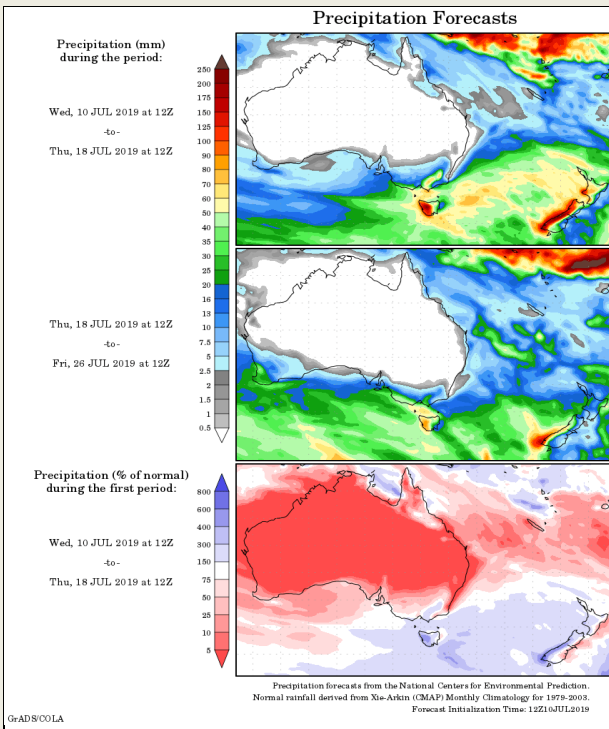
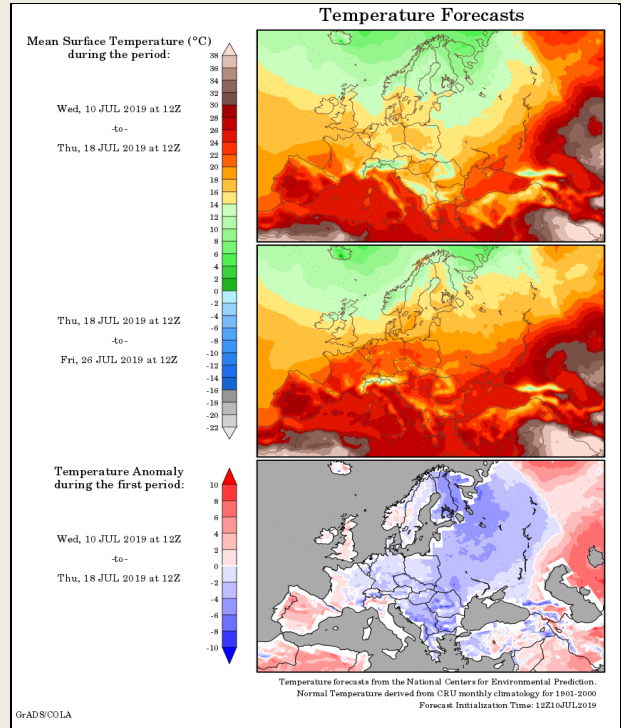
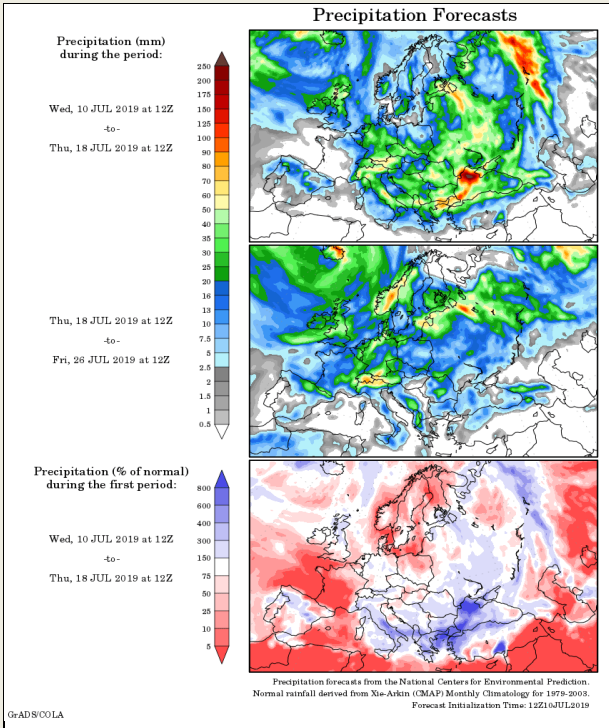


DISCLAIMER: This report has been prepared by GroCapital Financial Services Pty Ltd, a wholly owned subsidiary of AFGRI Operations Limited is provided to you for information purposes only. GROCAPITAL AND AFGRI hereby certify that the views expressed in this report were obtained from sources which GROCAPITAL AND AFGRI consider to be reliable. GROCAPITAL AND AFGRI do not make any representations or give any guarantees or warranties, expressed or implied, as to the correctness, accuracy or completeness of the report. Neither GROCAPITAL AND AFGRI, nor any affiliate, nor any of their respective officers, directors, partners or employees, shall assume any liability for any losses arising from errors or omissions in the opinions, forecasts or information, irrespective of whether there has been any negligence by GroCapital and AFGRI, their affiliate, or their respective officers, directors, partners or employees, regardless of whether such damages were foreseen or unforeseen. The information contained in this report is confidential and may be subject to legal privilege. This report is not intended to not should it be taken to create any legal relations or contractual relations.

Europe, New Zealand and Australia - Weather

EUROPE: Dryness will continue to be an issue in France this week, especially the west and south, and crops stress will be the greatest in these areas. Dryness continues to be an issue in parts of U.K., Germany, Belgium, Netherlands, Czech Republic and south Poland, but opportunities for rain will occur this week and provide some relief at least temporarily.

AUSTRALIA: Drought stricken areas in Queensland and northern New South Wales are expected to receive no "significant" precipitation during the next two weeks and wheat, barley and canola production will continue to struggle. Some recent improvements have occurred in coastal areas of Queensland, but drying will return during the next ten days.



DISCLAIMER: This report has been prepared by GroCapital Financial Services Pty Ltd, a wholly owned subsidiary of AFGRI Operations Limited is provided to you for information purposes only. GROCAPITAL AND AFGRI hereby certify that the views expressed in this report were obtained from sources which GROCAPITAL AND AFGRI consider to be reliable. GROCAPITAL AND AFGRI do not make any representations or give any guarantees or warranties, expressed or implied, as to the correctness, accuracy or completeness of the report. Neither GROCAPITAL AND AFGRI, nor any affiliate, nor any of their respective officers, directors, partners or employees, shall assume any liability for any losses arising from errors or omissions in the opinions, forecasts or information, irrespective of whether there has been any negligence by GroCapital and AFGRI, their affiliate, or their respective officers, directors, partners or employees, regardless of whether such damages were foreseen or unforeseen. The information contained in this report is confidential and may be subject to legal privilege. This report is not intended to not should it be taken to create any legal relations or contractual relations.