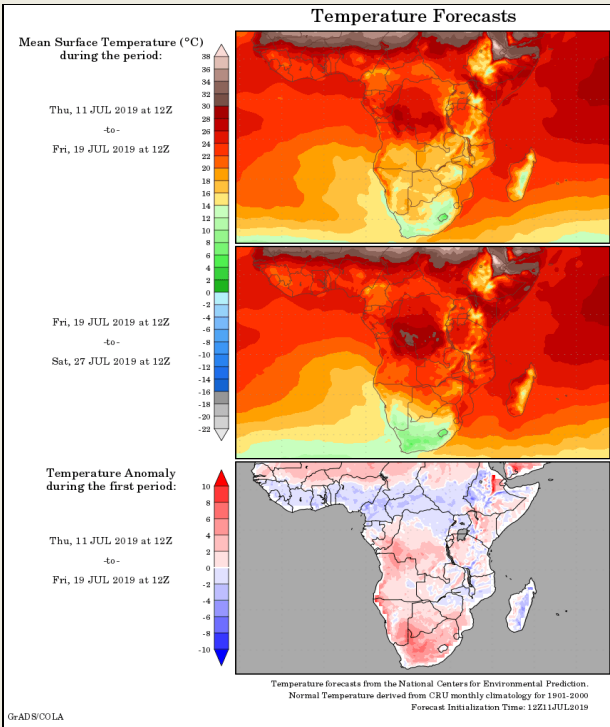
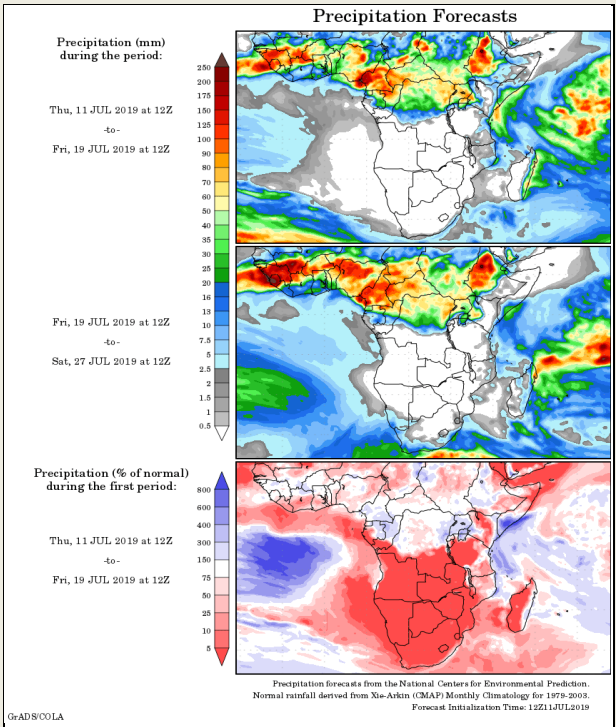
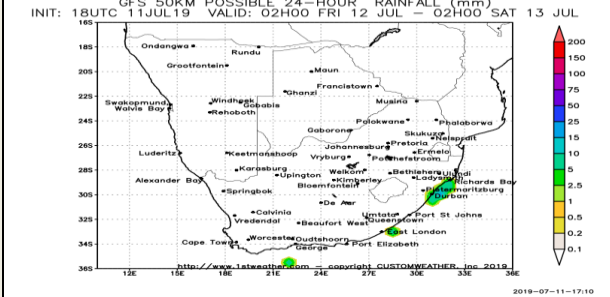
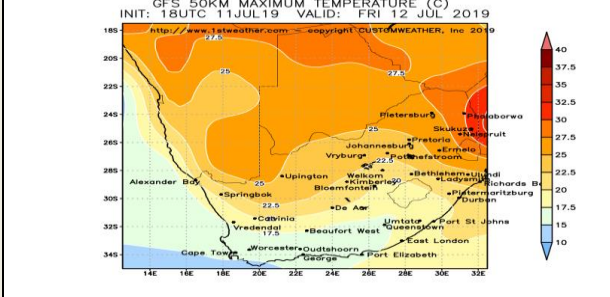
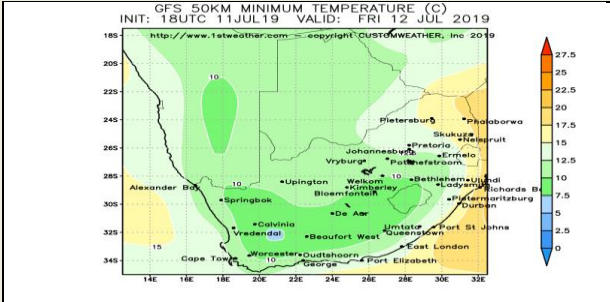
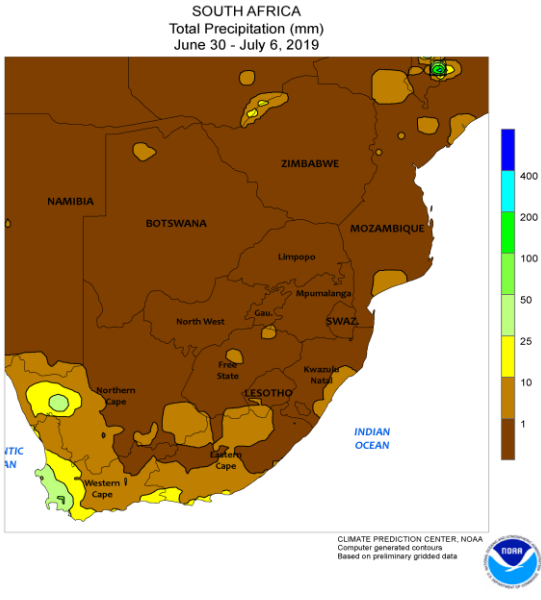




Weather Report
12 July 2019

South Africa - Weather

- Any harvesting not yet complete will advance swiftly in the coming weeks
- Most areas will continue to dry down during the next two weeks
- Free State and neighboring areas remain critically dry
- Winter wheat is dormant or semi-dormant and the dryness has not yet had a significant impact on the crops
- A significant boost in rain will be needed once the wheat begins developing to maintain a good outlook
- Many areas in Western Cape are still too dry to support ideal winter wheat prospects despite recent periods of light rain
- Additional precipitation is needed to completely reverse the moisture deficits

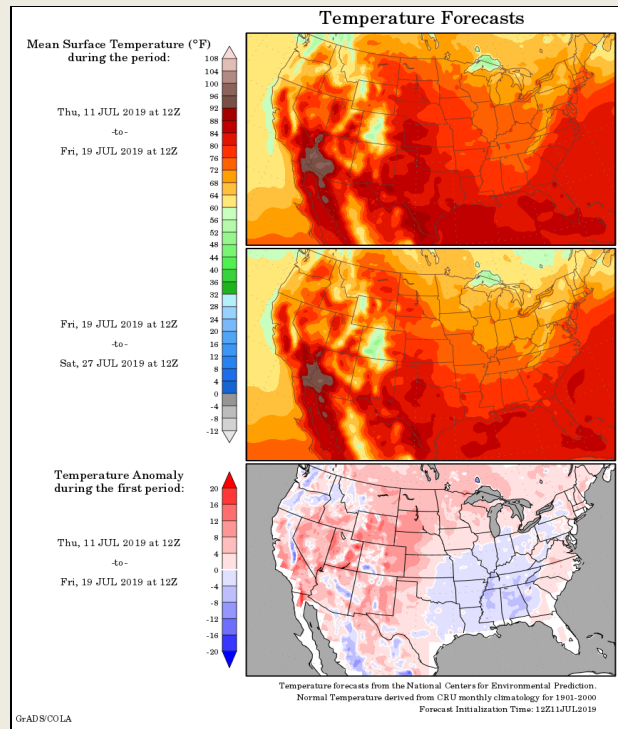
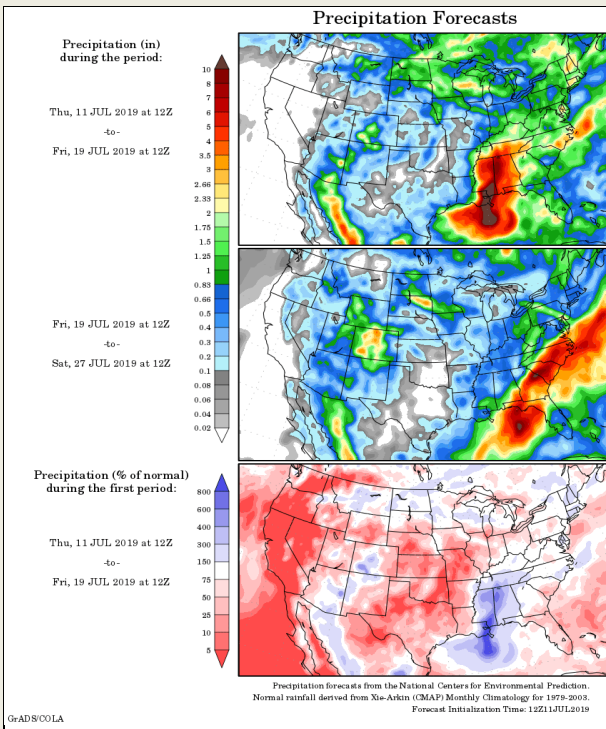
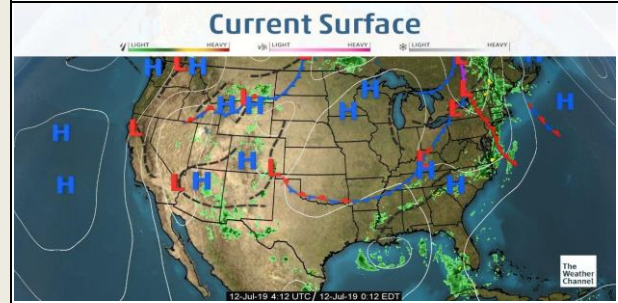
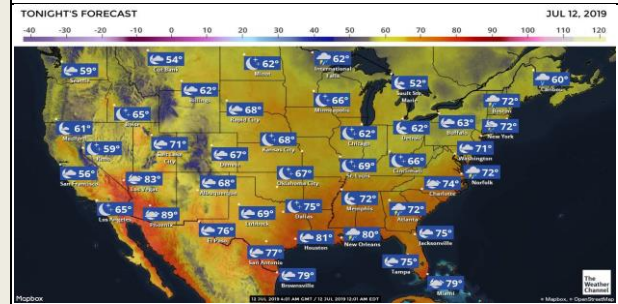
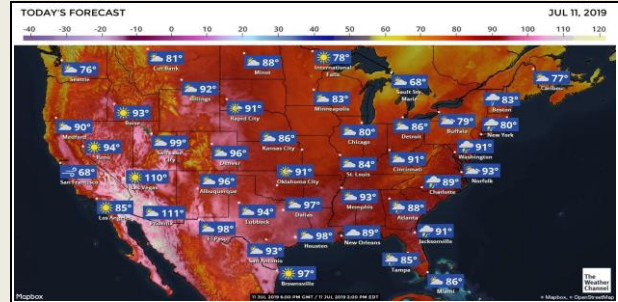
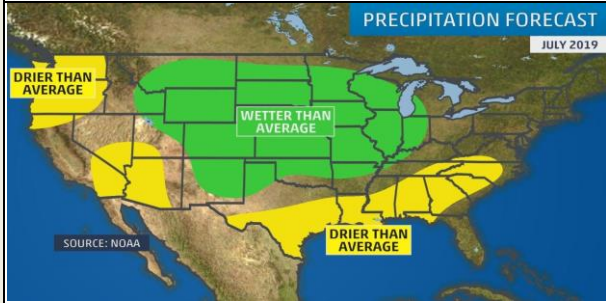


DISCLAIMER: This report has been prepared by GroCapital Financial Services Pty Ltd, a wholly owned subsidiary of AFGRI Operations Limited. It is provided to you for information purposes only. GROCAPITAL AND AFGRI hereby certify that the views expressed in this report were obtained from sources which GROCAPITAL AND AFGRI consider to be reliable. GROCAPITAL AND AFGRI do not make any representations or give any guarantees or warranties, expressed or implied, as to the correctness, accuracy or completeness of the report. Neither GROCAPITAL AND AFGRI, nor any affiliate, nor any of their respective officers, directors, partners or employees, shall assume any liability for any losses arising from errors or omissions in the opinions, forecasts or information, irrespective of whether there has been any negligence by GroCapital and AFGRI, their affiliate, or their respective officers, directors, partners or employees, regardless of whether such damages were foreseen or unforeseen. The information contained in this report is confidential and may be subject to legal privilege. This report is not intended to not should it be taken to create any legal relations or contractual relations.

United States of America - Weather

U.S. MIDWEST: No significant changes have been made to the two-week outlook since Wednesday and a large part of the lower and eastern Midwest will continue to dry down and some late-planted soybeans could be stressed and see declining yield potentials while crops that were planted near the normal dates should not be seriously impacted by the drying for at least the next two weeks.

U.S. DELTA AND SOUTHEAST: A tropical depression is likely to form in the north-central Gulf of Mexico to the south-southeast of New Orleans, Louisiana later today before moving to the north and making landfall on southeastern Louisiana Friday night or early Saturday. A tropical depression is likely to form in the north-central Gulf of Mexico to the south-southeast of New Orleans, Louisiana later today before moving to the north and making landfall on southeastern Louisiana Friday night or early Saturday.



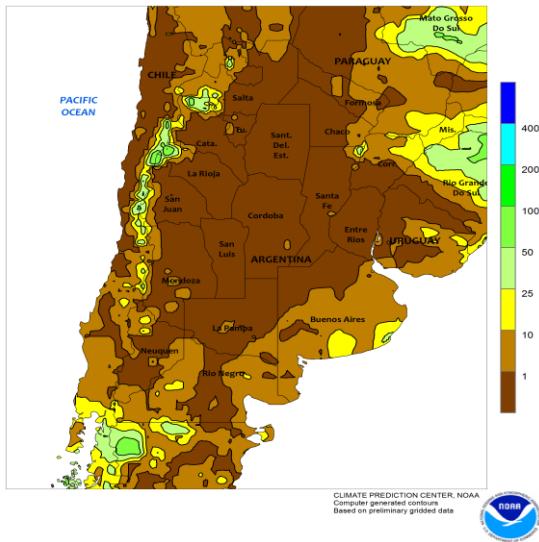
DISCLAIMER: This report has been prepared by GroCapital Financial Services Pty Ltd, a wholly owned subsidiary of AFGRI Operations Limited is provided to you for information purposes only. GROCAPITAL AND AFGRI hereby certify that the views expressed in this report were obtained from sources which GROCAPITAL AND AFGRI consider to be reliable. GROCAPITAL AND AFGRI do not make any representations or give any guarantees or warranties, expressed or implied, as to the correctness, accuracy or completeness of the report. Neither GROCAPITAL AND AFGRI, nor any affiliate, nor any of their respective officers, directors, partners or employees, shall assume any liability for any losses arising from errors or omissions in the opinions, forecasts or information, irrespective of whether there has been any negligence by GroCapital and AFGRI, their affiliate, or their respective officers, directors, partners or employees, regardless of whether such damages were foreseen or unforeseen. The information contained in this report is confidential and may be subject to legal privilege. This report is not intended to not should it be taken to create any legal relations or contractual relations.

South America - Weather

BRAZIL: A restricted rainfall pattern will occur most often in Brazil and Paraguay through the next two weeks with regular rounds of light showers in the northeast near the coast and an increase in rain in southern Brazil Friday into Sunday with another round of rain possible July 18-20.

ARGENTINA: Argentina will continue to see a restricted rainfall pattern most often through the next two weeks and planting of winter wheat and harvesting of summer crops should advance well overall. The drier areas in southwestern Argentina remain in need of greater rain to improve conditions for winter wheat and little to no rain of significance is expected there for at least the next ten days.

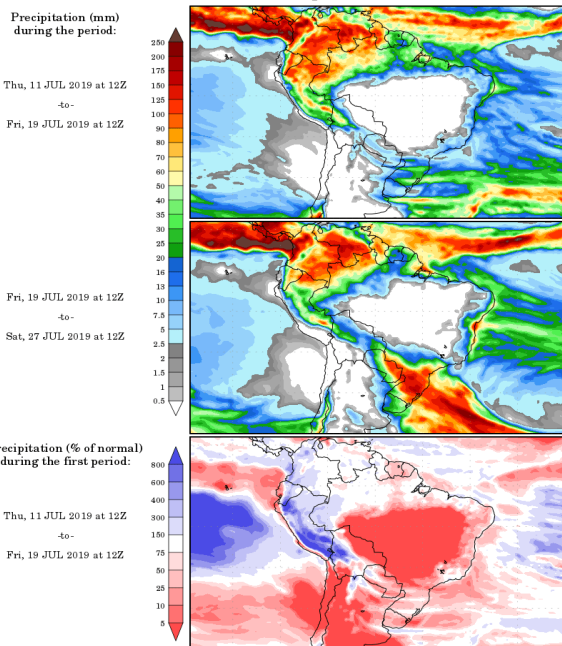
ARGENTINA
Total Precipitation (mm)
June 30 - July 6, 2019



10 20 30 40 50 60 70 80 90 (%)

-20° -10° 0° 10° 20° 30° 40° (C)

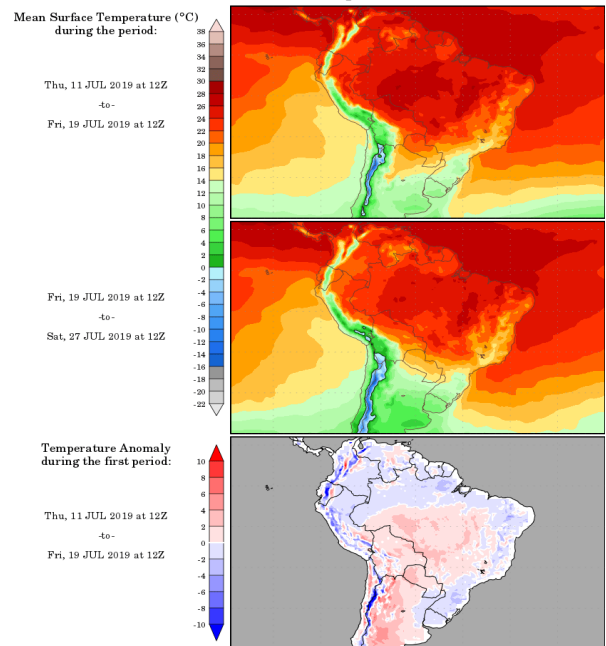
Precipitation Forecasts



Precipitation forecasts from the National Centers for Environmental Prediction. Normal rainfall derived from Xie-Arkin (CMAF) Monthly Climatology for 1978-2003. Forecast Initialization Time: 12Z 11 JUL 2019

GrADS/COILA

Temperature Forecasts



Temperature forecasts from the National Centers for Environmental Prediction. Normal Temperature derived from CRU monthly climatology for 1901-2000. Forecast Initialization Time: 12Z 11 JUL 2019

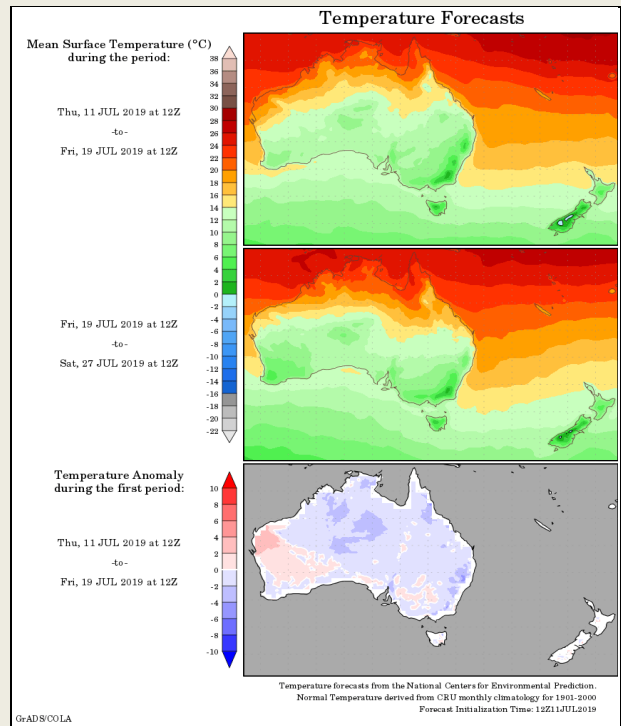
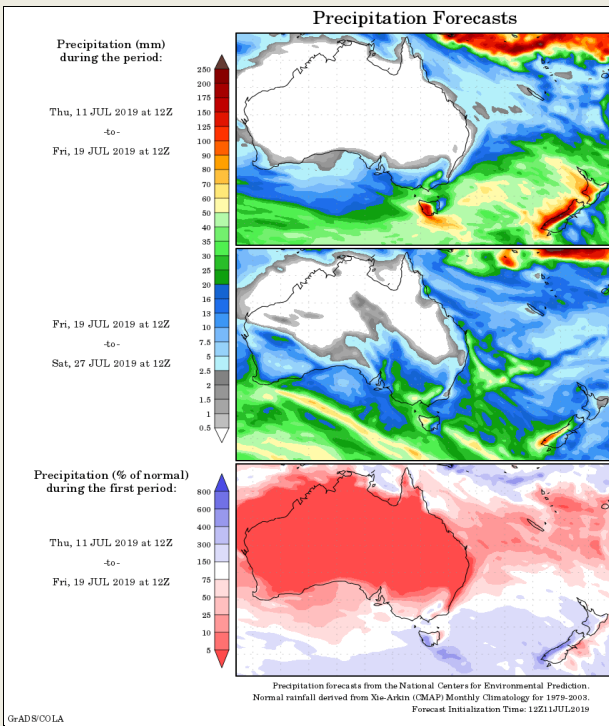
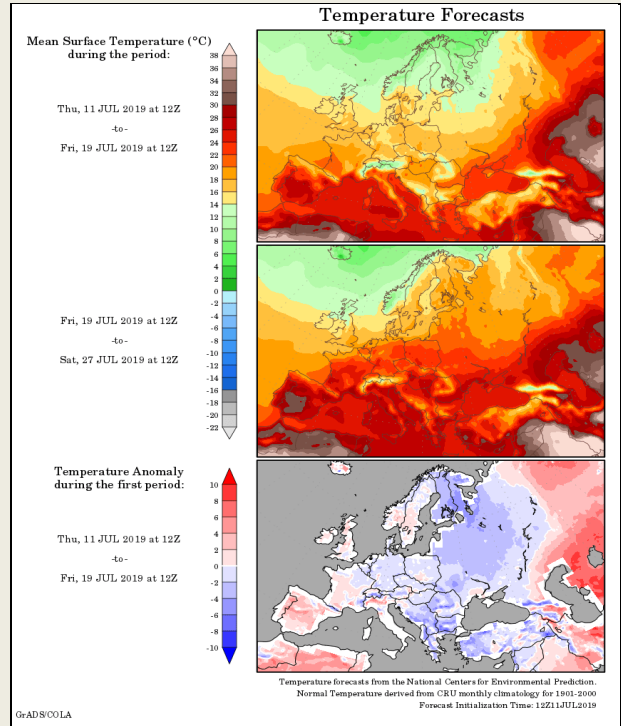
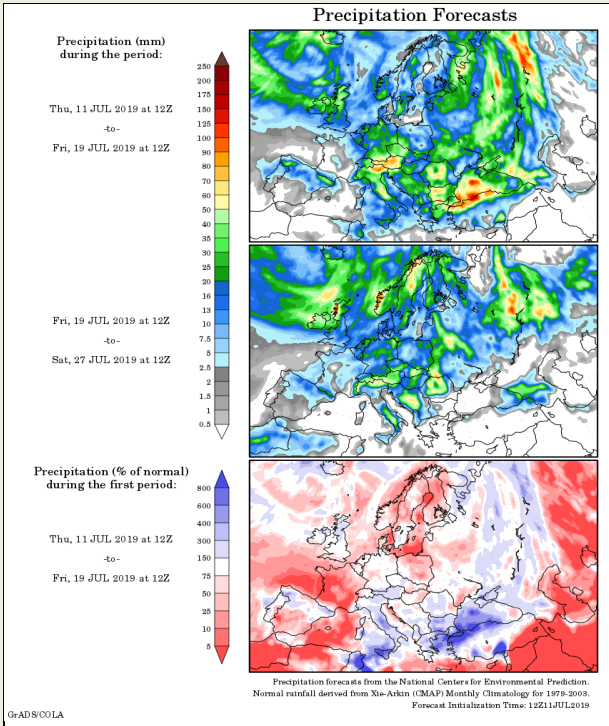
GrADS/COILA

DISCLAIMER: This report has been prepared by GroCapital Financial Services Pty Ltd, a wholly owned subsidiary of AFGRI Operations Limited is provided to you for information purposes only. GROCAPITAL AND AFGRI hereby certify that the views expressed in this report were obtained from sources which GROCAPITAL AND AFGRI consider to be reliable. GROCAPITAL AND AFGRI do not make any representations or give any guarantees or warranties, expressed or implied, as to the correctness, accuracy or completeness of the report. Neither GROCAPITAL AND AFGRI, nor any affiliate, nor any of their respective officers, directors, partners or employees, shall assume any liability for any losses arising from errors or omissions in the opinions, forecasts or information, irrespective of whether there has been any negligence by GroCapital and AFGRI, their affiliate, or their respective officers, directors, partners or employees, regardless of whether such damages were foreseen or unforeseen. The information contained in this report is confidential and may be subject to legal privilege. This report is not intended to not should it be taken to create any legal relations or contractual relations.

Europe, New Zealand and Australia - Weather

EUROPE: Dryness will continue to be an issue in France this week, especially the west and south, and crops stress will be the greatest in these areas. Dryness continues to be an issue in parts of U.K., Germany, Belgium, Netherlands, Czech Republic and south Poland, but opportunities for rain will occur this week and provide some relief at least temporarily.

AUSTRALIA: Drought stricken areas in Queensland and northern New South Wales are expected to receive no "significant" precipitation during the next two weeks and wheat, barley and canola production will continue to struggle. Some recent improvements have occurred in coastal areas of Queensland, but drying will return during the next ten days.



DISCLAIMER: This report has been prepared by GroCapital Financial Services Pty Ltd, a wholly owned subsidiary of AFGRI Operations Limited is provided to you for information purposes only. GROCAPITAL AND AFGRI hereby certify that the views expressed in this report were obtained from sources which GROCAPITAL AND AFGRI consider to be reliable. GROCAPITAL AND AFGRI do not make any representations or give any guarantees or warranties, expressed or implied, as to the correctness, accuracy or completeness of the report. Neither GROCAPITAL AND AFGRI, nor any affiliate, nor any of their respective officers, directors, partners or employees, shall assume any liability for any losses arising from errors or omissions in the opinions, forecasts or information, irrespective of whether there has been any negligence by GroCapital and AFGRI, their affiliate, or their respective officers, directors, partners or employees, regardless of whether such damages were foreseen or unforeseen. The information contained in this report is confidential and may be subject to legal privilege. This report is not intended to not should it be taken to create any legal relations or contractual relations.