

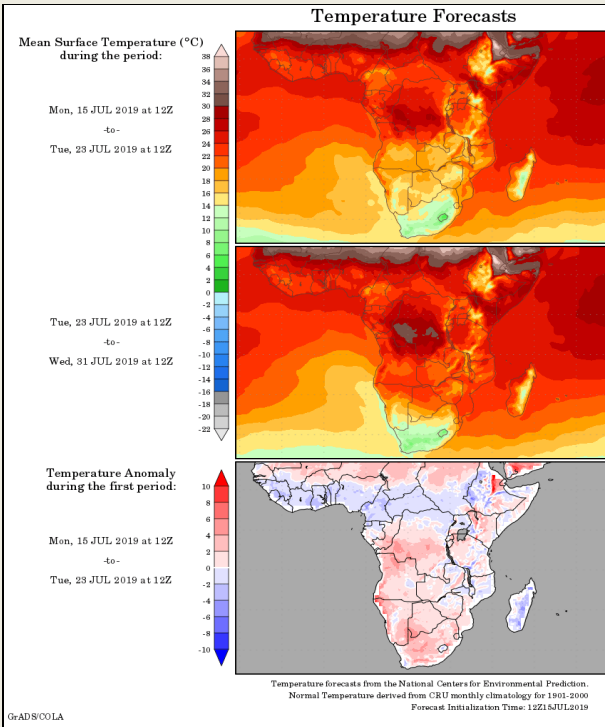
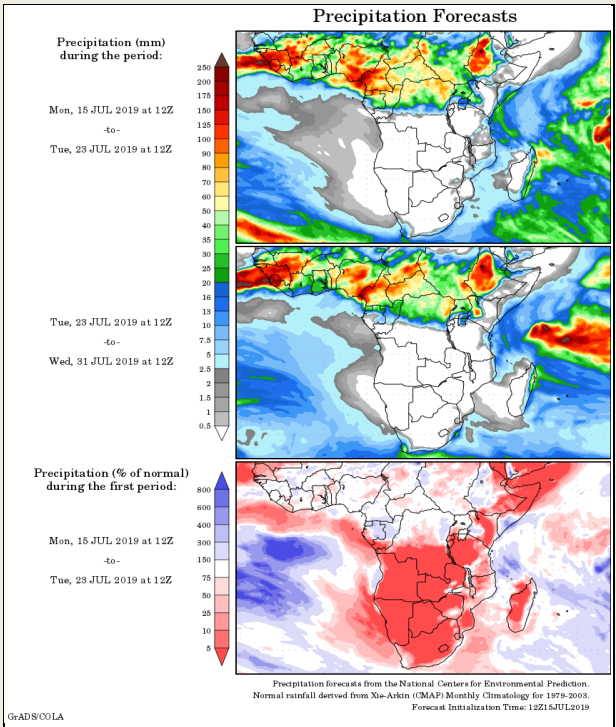
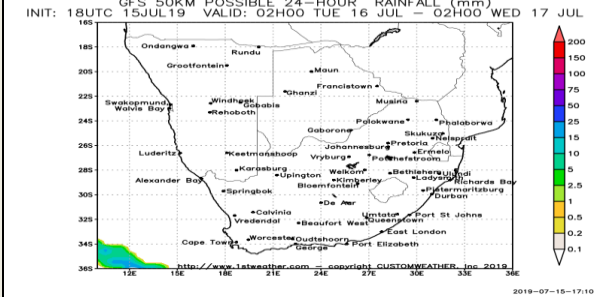
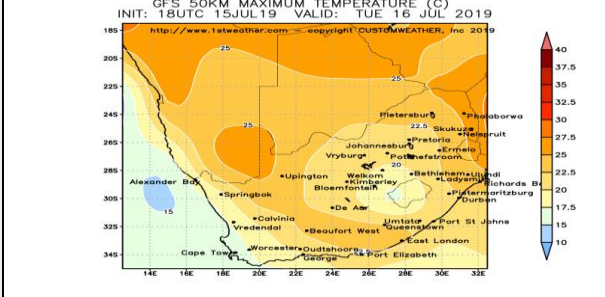
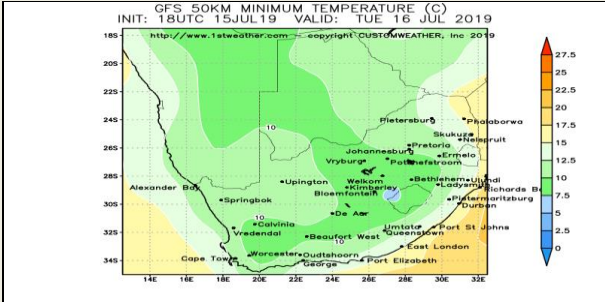
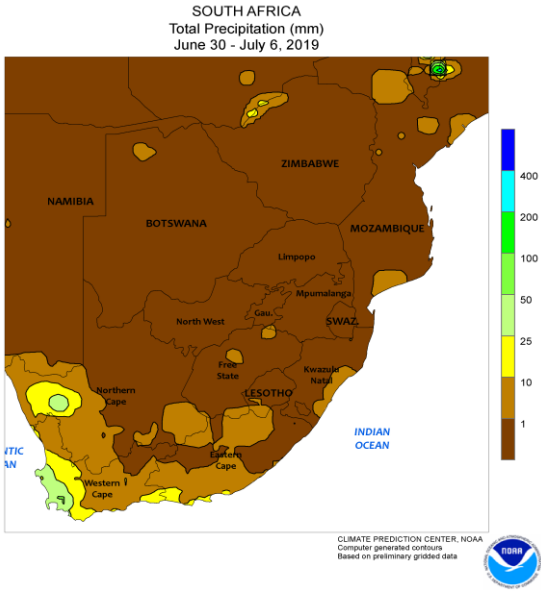


**Weather Report**  
**16 July 2019**

South Africa - Weather

Any harvesting not yet complete will advance swiftly

- The ground will continue to firm up during the next two weeks
- Free State and neighboring areas remain critically dry
- Winter wheat is still dormant or semi-dormant and has not yet been significantly impacted by the dryness
- Significant rain will be needed later this year once the wheat begins developing again
- Western Cape will generally remain too dry to support ideal winter crop conditions in the coming weeks as well
- Additional precipitation is needed to completely reverse the moisture deficits

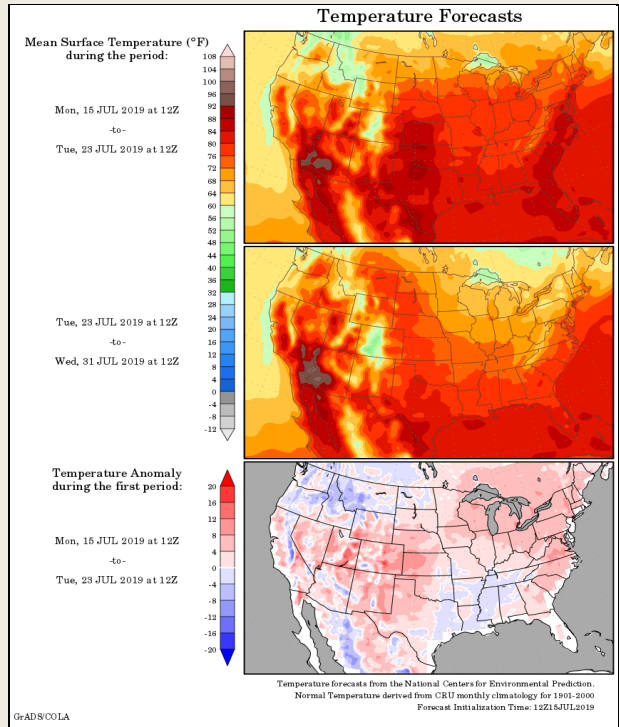
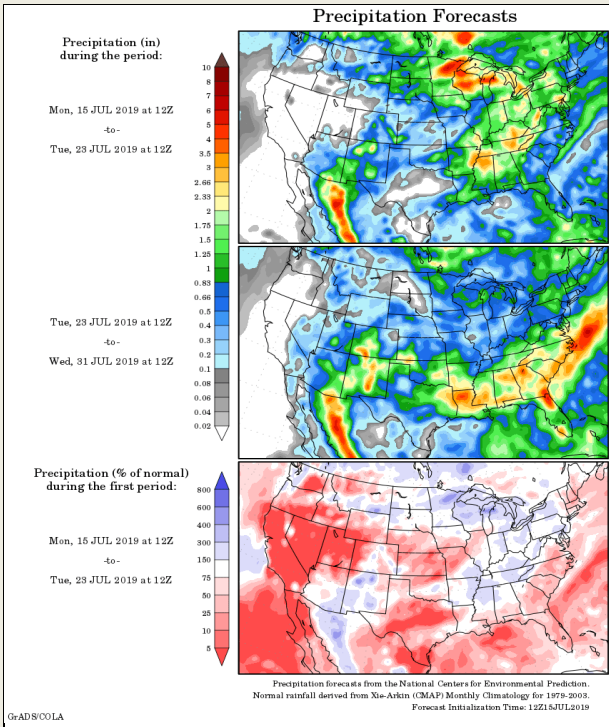
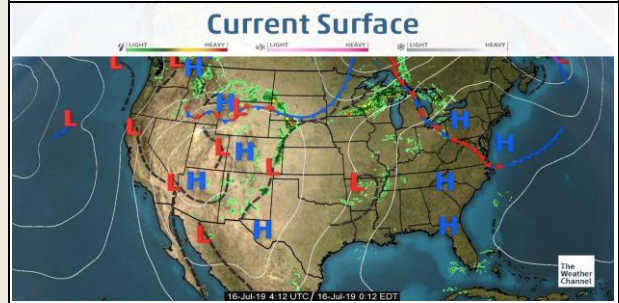
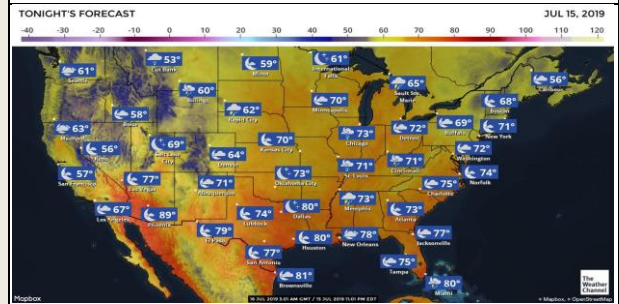
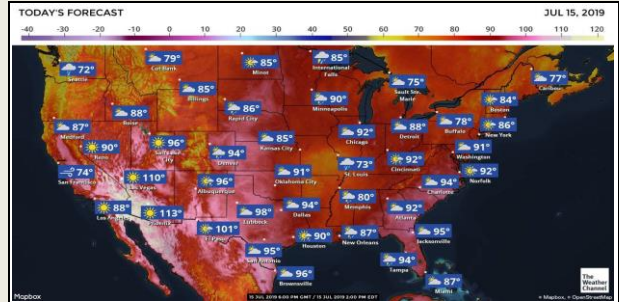
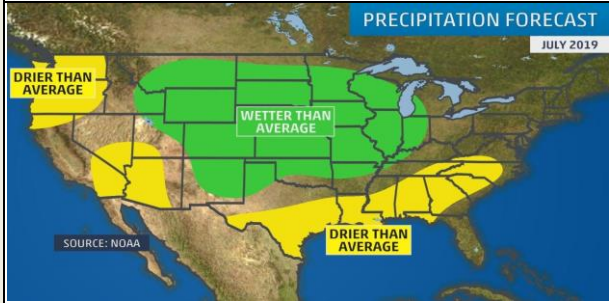


DISCLAIMER: This report has been prepared by GroCapital Financial Services Pty Ltd, a wholly owned subsidiary of AFGRI Operations Limited. It is provided to you for information purposes only. GROCAPITAL AND AFGRI hereby certify that the views expressed in this report were obtained from sources which GROCAPITAL AND AFGRI consider to be reliable. GROCAPITAL AND AFGRI do not make any representations or give any guarantees or warranties, expressed or implied, as to the correctness, accuracy or completeness of the report. Neither GROCAPITAL AND AFGRI, nor any affiliate, nor any of their respective officers, directors, partners or employees, shall assume any liability for any losses arising from errors or omissions in the opinions, forecasts or information, irrespective of whether there has been any negligence by GroCapital and AFGRI, their affiliate, or their respective officers, directors, partners or employees, regardless of whether such damages were foreseen or unforeseen. The information contained in this report is confidential and may be subject to legal privilege. This report is not intended to not should it be taken to create any legal relations or contractual relations.

# United States of America - Weather

**U.S. MIDWEST:** The bottom line to the two-week outlook has not changed much since late last week and little rain through the next ten days to two weeks and hot temperatures for several days this week will cause significant drying from the west-central and southwestern Corn Belt into central Illinois. Rising levels of crop stress and declining yield potentials to late-planted soybeans are likely while most crops that were planted near the normal

**U.S. DELTA AND SOUTHEAST:** The remnants of Hurricane Barry will bring additional rain and some local flooding from the Delta through Mississippi and portions of western and northern Alabama today into Tuesday before the system moves away from the region. After Barry's remnants exit the region, the Delta and the Southeast will return to a seasonable pattern of isolated to scattered showers each day during the next two weeks that will slow drying rates and maintain favorable conditions for crops in most areas.



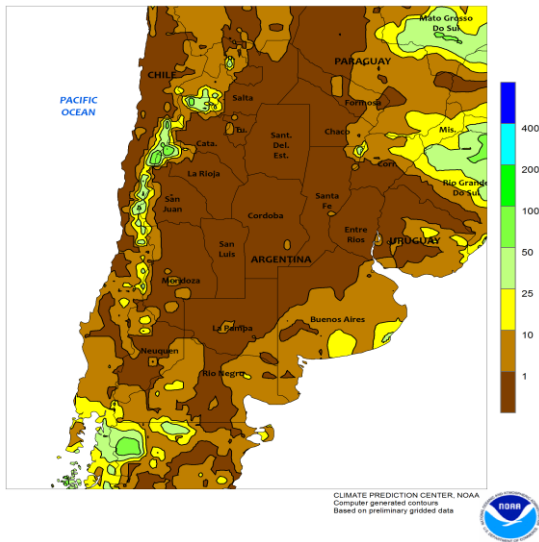
**DISCLAIMER:** This report has been prepared by GroCapital Financial Services Pty Ltd, a wholly owned subsidiary of AFGRI Operations Limited. It is provided to you for information purposes only. GROCAPITAL AND AFGRI hereby certify that the views expressed in this report were obtained from sources which GROCAPITAL AND AFGRI consider to be reliable. GROCAPITAL AND AFGRI do not make any representations or give any guarantees or warranties, expressed or implied, as to the correctness, accuracy or completeness of the report. Neither GROCAPITAL AND AFGRI, nor any affiliate, nor any of their respective officers, directors, partners or employees, shall assume any liability for any losses arising from errors or omissions in the opinions, forecasts or information, irrespective of whether there has been any negligence by GroCapital and AFGRI, their affiliate, or their respective officers, directors, partners or employees, regardless of whether such damages were foreseen or unforeseen. The information contained in this report is confidential and may be subject to legal privilege. This report is not intended to not should it be taken to create any legal relations or contractual relations.

# South America - Weather

**BRAZIL:** A restricted rainfall pattern will occur most often in Brazil and Paraguay through the next two weeks with regular rounds of light showers in the northeast near the coast and an increase in rain in southern Brazil today into Sunday with another round of rain Thursday into July 20.

**ARGENTINA:** Argentina will continue to see a restricted rainfall pattern most often through the next two weeks and planting of winter wheat and harvesting of summer crops should advance well overall. The drier areas in southwestern Argentina remain in need of greater rain to improve conditions for winter wheat and little to no rain of significance is expected there for at least the next ten days.

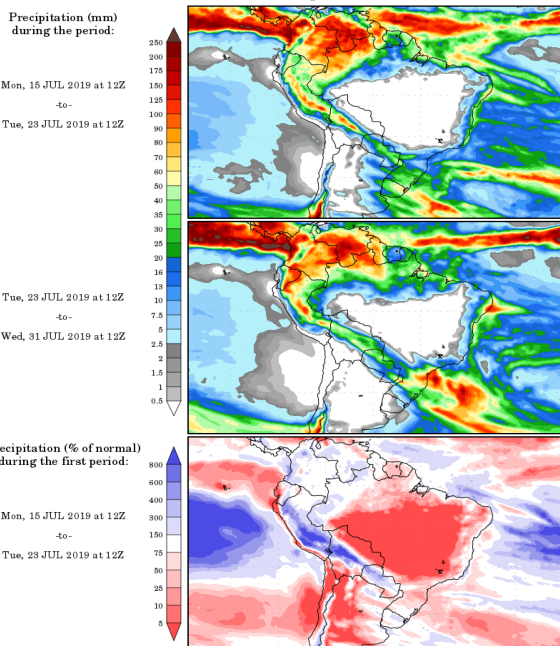
ARGENTINA  
Total Precipitation (mm)  
June 30 - July 6, 2019



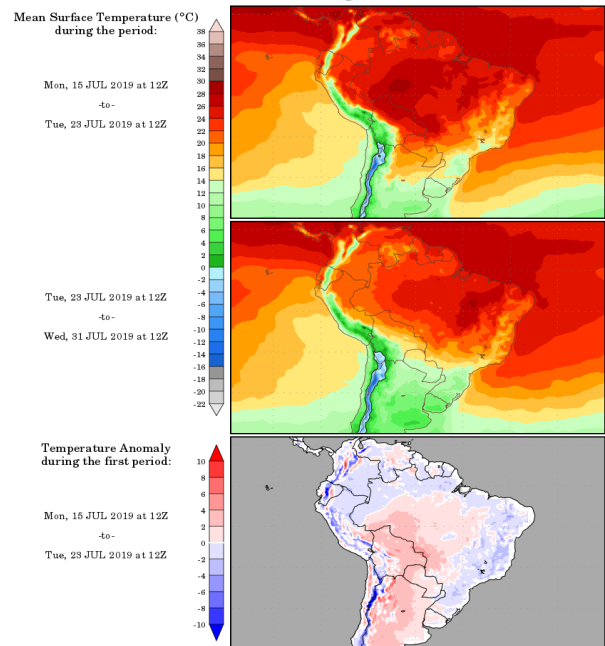
10 20 30 40 50 60 70 80 90 (%)

-20° -10° 0° 10° 20° 30° 40° (C)

## Precipitation Forecasts



## Temperature Forecasts

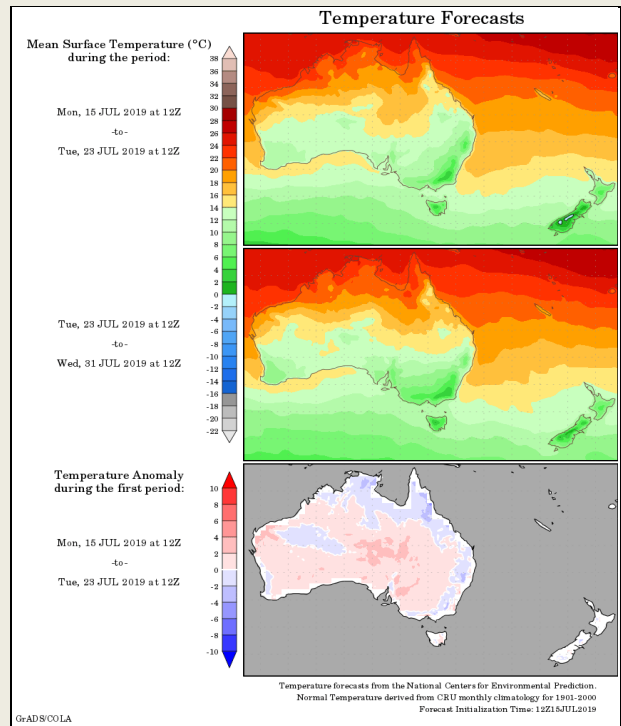
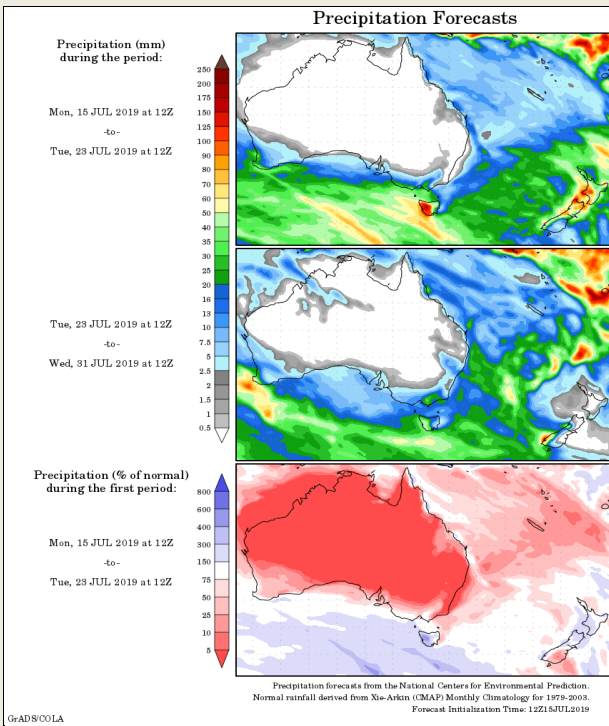
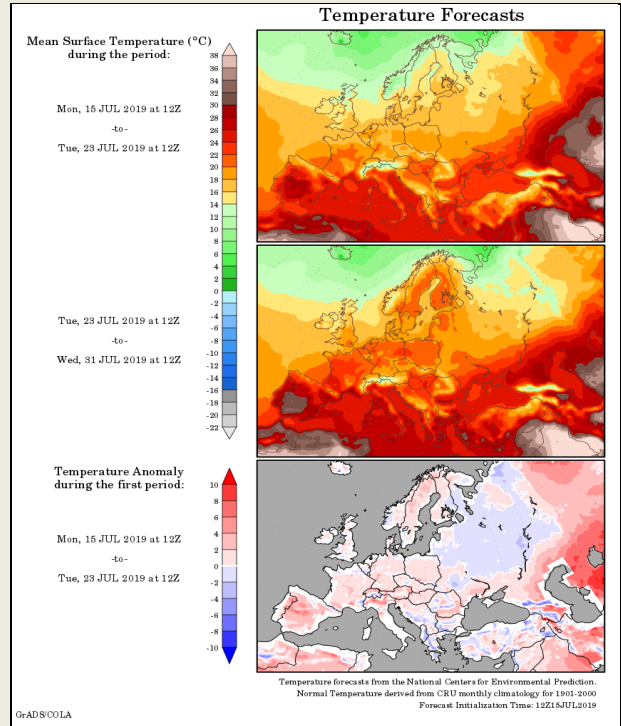
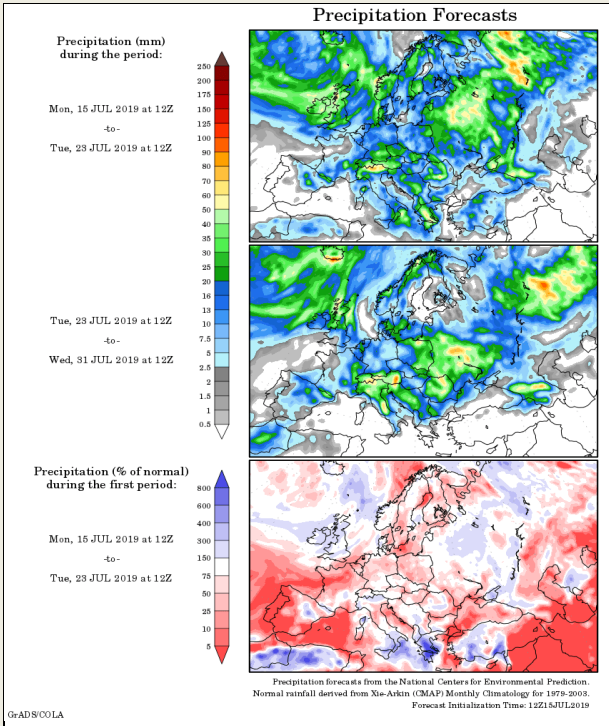


**DISCLAIMER:** This report has been prepared by GroCapital Financial Services Pty Ltd, a wholly owned subsidiary of AFGRI Operations Limited is provided to you for information purposes only. GROCAPITAL AND AFGRI hereby certify that the views expressed in this report were obtained from sources which GROCAPITAL AND AFGRI consider to be reliable. GROCAPITAL AND AFGRI do not make any representations or give any guarantees or warranties, expressed or implied, as to the correctness, accuracy or completeness of the report. Neither GROCAPITAL AND AFGRI, nor any affiliate, nor any of their respective officers, directors, partners or employees, shall assume any liability for any losses arising from errors or omissions in the opinions, forecasts or information, irrespective of whether there has been any negligence by GroCapital and AFGRI, their affiliate, or their respective officers, directors, partners or employees, regardless of whether such damages were foreseen or unforeseen. The information contained in this report is confidential and may be subject to legal privilege. This report is not intended to not should it be taken to create any legal relations or contractual relations.

# Europe, New Zealand and Australia - Weather

**EUROPE:** Dryness will continue to be an issue in France this week and crops stress will be the greatest. Dryness continues to be an issue in parts of U.K., and central Poland as well as the Iberian Peninsula. Some dryness may return to northern Germany. Periods of rain will provide some temporary relief to areas in the southern U.K. this week as well, but most other locations will experience net drying this week

**AUSTRALIA:** Drought stricken areas in Queensland and northern New South Wales are expected to receive no "significant" precipitation during the next two weeks and wheat, barley and canola production will continue to struggle. Some recent improvements have occurred in coastal areas of Queensland, but drying will return during the next ten days.



**DISCLAIMER:** This report has been prepared by GroCapital Financial Services Pty Ltd, a wholly owned subsidiary of AFGRI Operations Limited is provided to you for information purposes only. GROCAPITAL AND AFGRI hereby certify that the views expressed in this report were obtained from sources which GROCAPITAL AND AFGRI consider to be reliable. GROCAPITAL AND AFGRI do not make any representations or give any guarantees or warranties, expressed or implied, as to the correctness, accuracy or completeness of the report. Neither GROCAPITAL AND AFGRI, nor any affiliate, nor any of their respective officers, directors, partners or employees, shall assume any liability for any losses arising from errors or omissions in the opinions, forecasts or information, irrespective of whether there has been any negligence by GroCapital and AFGRI, their affiliate, or their respective officers, directors, partners or employees, regardless of whether such damages were foreseen or unforeseen. The information contained in this report is confidential and may be subject to legal privilege. This report is not intended to not should it be taken to create any legal relations or contractual relations.