



# **Weather Report**

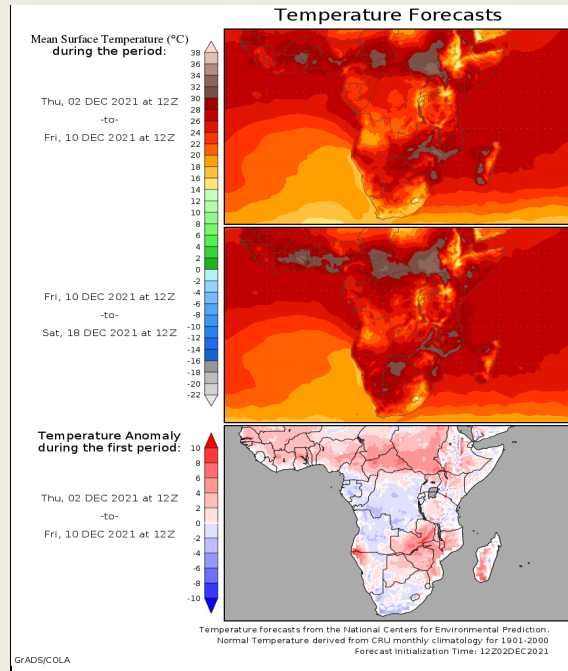
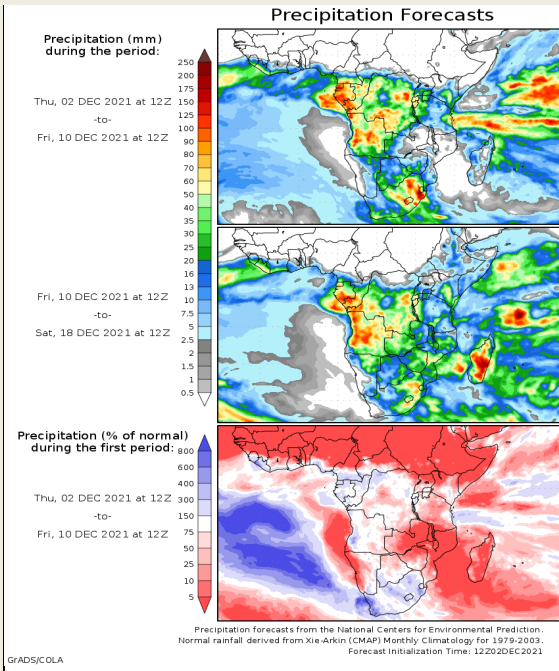
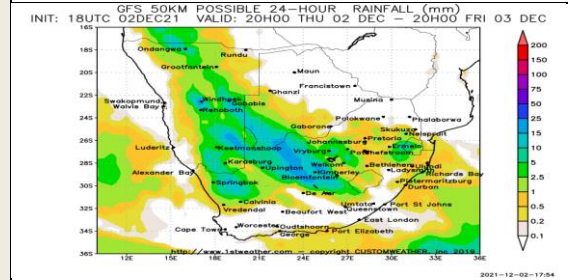
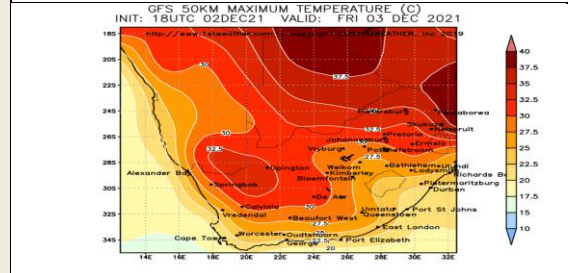
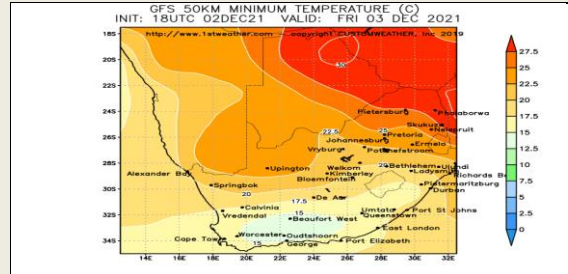
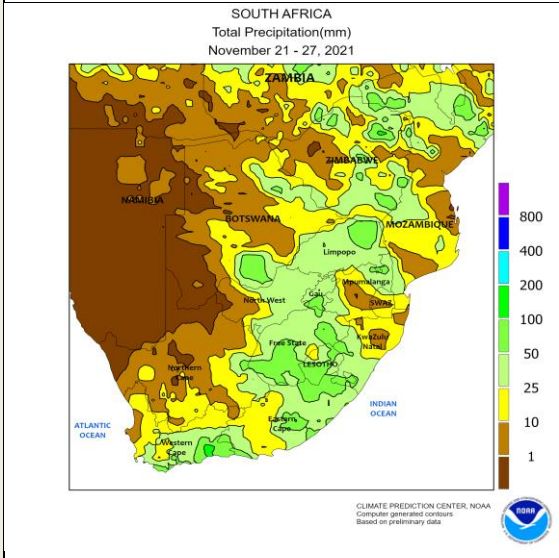
## **03 December 2021**

# South Africa - Weather

Eastern and central South Africa will see several waves of rain during the coming week. Soil moisture will gradually increase for the main coarse grain, oilseed, cotton, and other crop production areas. Conditions for establishment and growth will either improve or remain favorable for most locations. Planting and general fieldwork may otherwise be sluggish.

Western Cape and Northern Cape will also have opportunities for rain during the coming week. The precipitation will be beneficial for the cotton that is produced in Northern Cape this time of year. Any winter wheat harvesting that is not yet complete may otherwise be slowed during the periods of rain. Eastern and central South Africa will have several opportunities for erratic rainfall during the coming week. Two disturbances will generate rain today into this weekend with a few light showers expected early next week.

Some of the most widespread rain will occur Saturday and Sunday. Erratic rain will continue at the beginning and middle of next week, most notably in eastern South Africa. Moisture totals by next Thursday morning will range from 1.50-5.00" and local amounts of 7.00" or more in Natal, Mpumalanga, and eastern Free State.



**DISCLAIMER:** This report has been prepared by GroCapital Financial Services Pty Ltd, a wholly owned subsidiary of AFGR Operations Limited provided to you for information purposes only. GROCAPITAL AND AFGR hereby certify that the views expressed in this report were obtained from sources which GROCAPITAL AND AFGR consider to be reliable. GROCAPITAL AND AFGR do not make any representations or give any guarantees or warranties, expressed or implied, as to the correctness, accuracy or completeness of the report. Neither GROCAPITAL AND AFGR, nor any affiliate, nor any of their respective officers, directors, partners or employees, shall assume any liability for any losses arising from errors or omissions in the opinions, forecasts or information, irrespective of whether there has been any negligence by GroCapital and AFGR, their affiliate, or their respective officers, directors, partners or employees, regardless of whether such damages were foreseen or unforeseen. The information contained in this report is confidential and may be subject to legal privilege. This report is not intended to not should it be taken to create any legal relations or contractual relations.

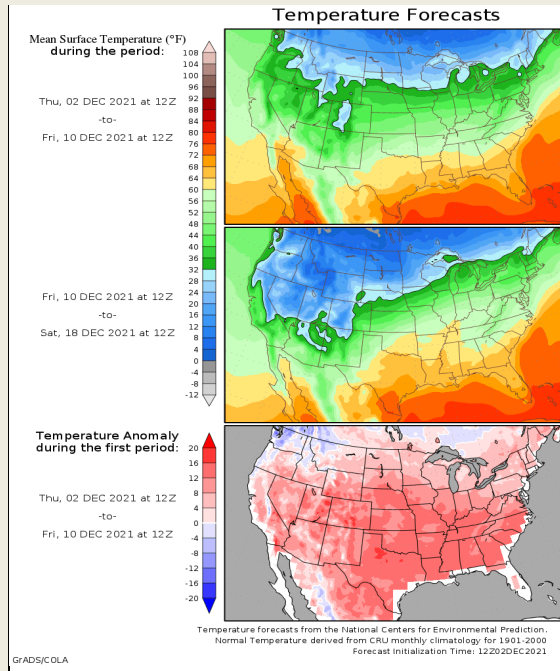
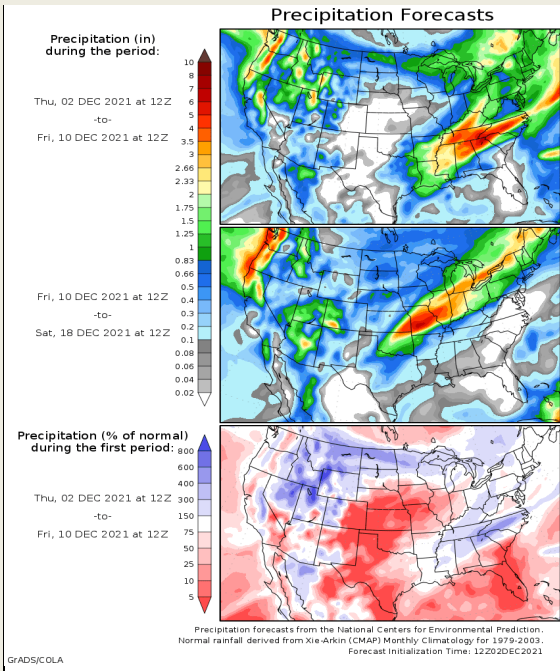
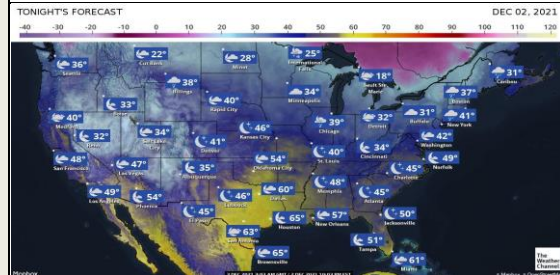
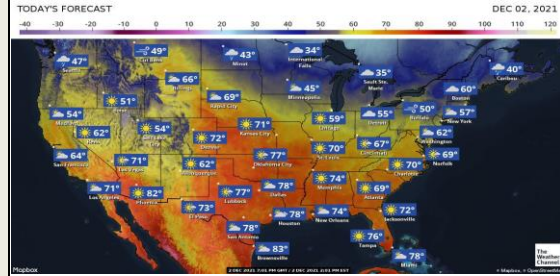
# United States of America - Weather

**U.S. MIDWEST:** Fieldwork will advance well overall during the next two weeks as dry weather will be most common, but showers will occur often enough in some eastern areas that late soybean harvesting will be slowed at times.

- o Most of the precipitation will be light and most fieldwork should quickly resume after the precipitation ends, but the few remaining unharvested soybeans may not dry out fast enough to be harvesting to occur for extended periods.
- o The most significant storm system to impact the region will occur Dec. 10-12 with confidence for the details of this event low.

**U.S. DELTA AND SOUTHEAST:** Today's forecast is wetter for the Delta and the Southeast and after dry weather ends during the day Friday a period of wet weather will occur Friday night through Dec. 13 and late harvesting will be slowed.

- o Most of northern Florida and southern Georgia to southern Virginia will be dry into Tuesday while rain falls regularly further west starting Friday night.



**DISCLAIMER:** This report has been prepared by GroCapital Financial Services Pty Ltd, a wholly owned subsidiary of AFGRI Operations Limited is provided to you for information purposes only. GROCAPITAL AND AFGRI hereby certify that the views expressed in this report were obtained from sources which GROCAPITAL AND AFGRI consider to be reliable. GROCAPITAL AND AFGRI do not make any representations or give any guarantees or warranties, expressed or implied, as to the correctness, accuracy or completeness of the report. Neither GROCAPITAL AND AFGRI, nor any affiliate, nor any of their respective officers, directors, partners or employees, shall assume any liability for any losses arising from errors or omissions in the opinions, forecasts or information, irrespective of whether there has been any negligence by GroCapital and AFGRI, their affiliate, or their respective officers, directors, partners or employees, regardless of whether such damages were foreseen or unforeseen. The information contained in this report is confidential and may be subject to legal privilege. This report is not intended to not should it be taken to create any legal relations or contractual relations.

# South America - Weather

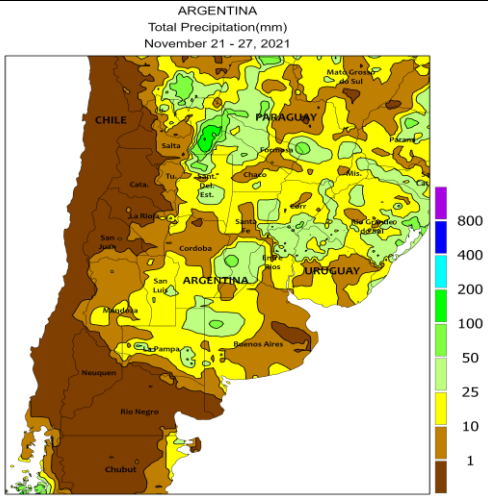
**BRAZIL:** Southern Brazil and Paraguay will see a restricted rainfall pattern through most of the next two weeks with two rounds of timely, but erratic and mostly light, rain expected Sunday into Monday and Dec. 9-11.

o Despite the two rounds of rain expected, much of the region will dry down significantly through the next two weeks and the region will need rain again soon to maintain favorable conditions for crops.

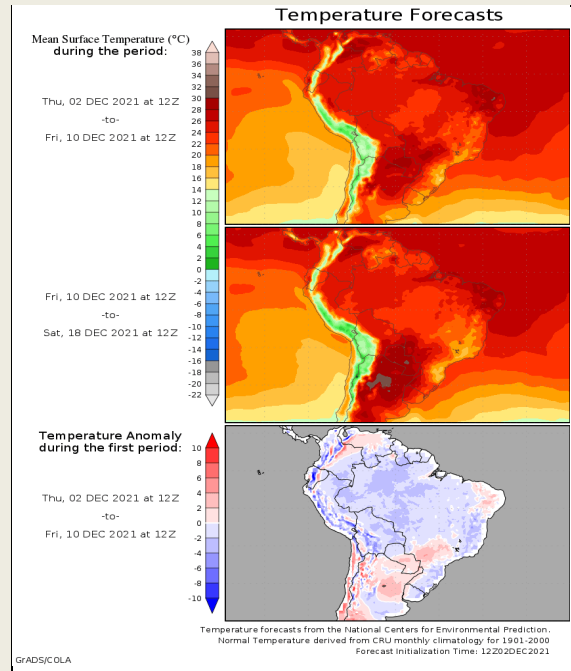
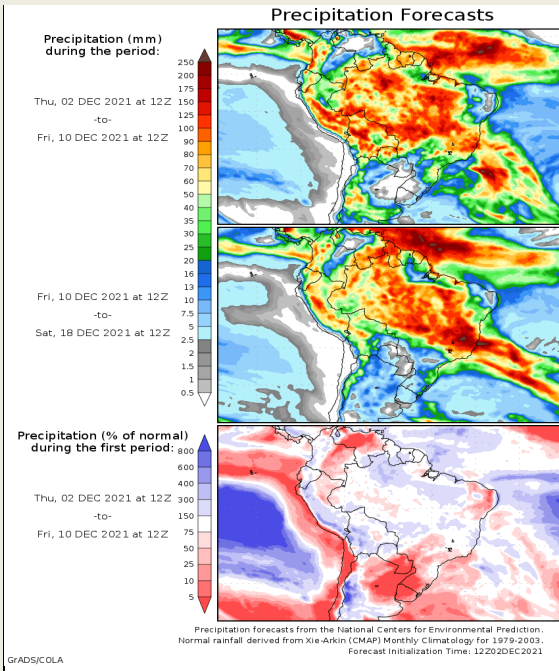
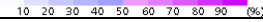
**ARGENTINA:** Outside of significant rain in west-central and most of southern Argentina into Saturday and some rain in the west Tuesday into Wednesday, a restricted rainfall pattern will occur through the next two weeks and planting should advance well while the soil should be moist enough to favorably support most developing crops.

o Rain into Saturday will be great enough to increase soil moisture from San Luis and southern Cordoba to central and eastern La Pampa and western into central Buenos Aires.

o Parts of west-central and northwestern Argentina will see rain as well with other areas mostly dry.



CLIMATE PREDICTION CENTER, NOAA  
Computer generated contour  
Based on preliminary data

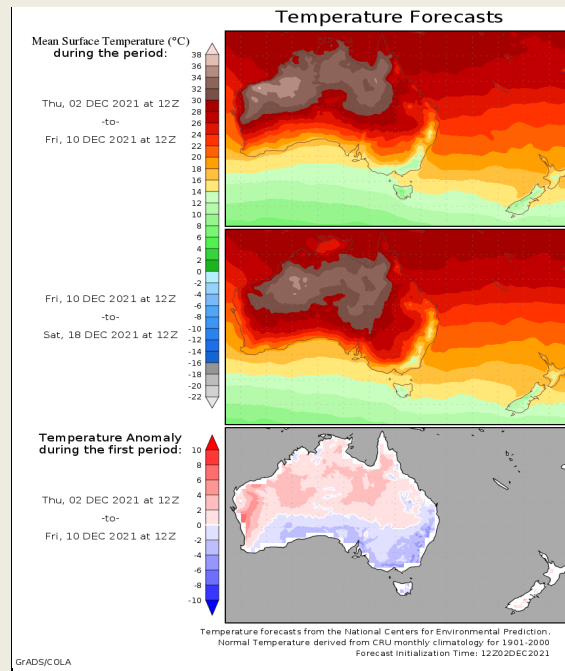
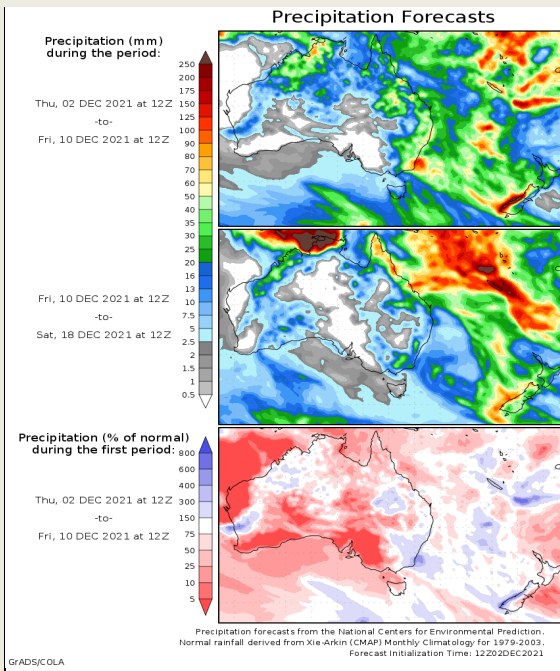
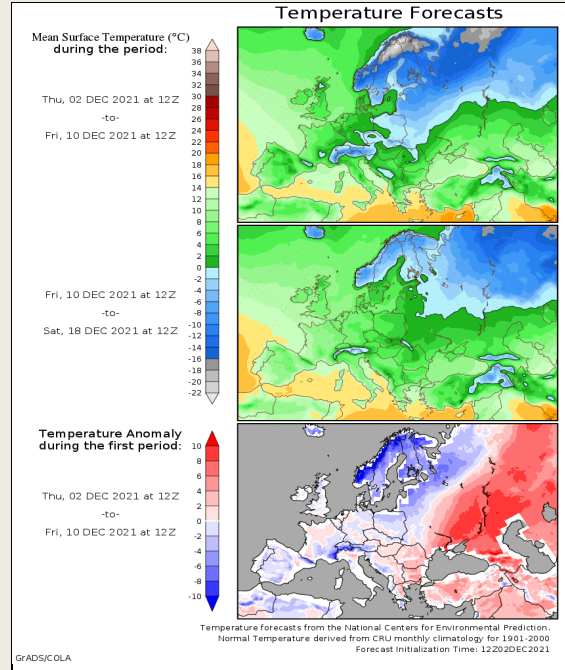
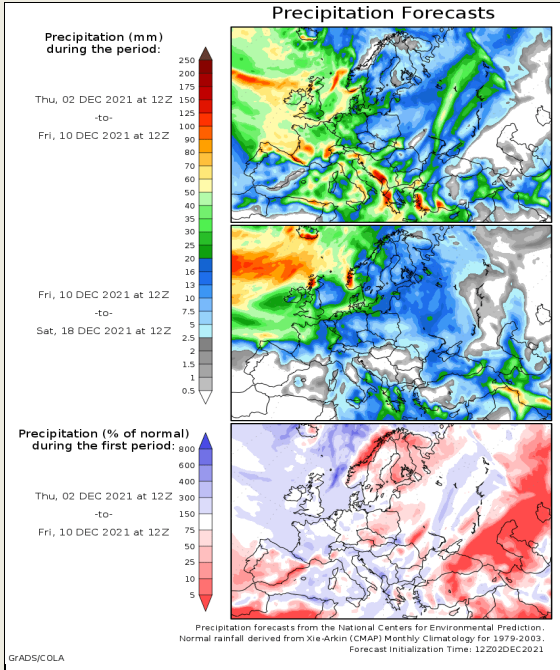


**DISCLAIMER:** This report has been prepared by GroCapital Financial Services Pty Ltd, a wholly owned subsidiary of AFGRI Operations Limited is provided to you for information purposes only. GROCAPITAL AND AFGRI hereby certify that the views expressed in this report were obtained from sources which GROCAPITAL AND AFGRI consider to be reliable. GROCAPITAL AND AFGRI do not make any representations or give any guarantees or warranties, expressed or implied, as to the correctness, accuracy or completeness of the report. Neither GROCAPITAL AND AFGRI, nor any affiliate, nor any of their respective officers, directors, partners or employees, shall assume any liability for any losses arising from errors or omissions in the opinions, forecasts or information, irrespective of whether there has been any negligence by GroCapital and AFGRI, their affiliate, or their respective officers, directors, partners or employees, regardless of whether such damages were foreseen or unforeseen. The information contained in this report is confidential and may be subject to legal privilege. This report is not intended to not should it be taken to create any legal relations or contractual relations.

# Europe, New Zealand and Australia - Weather

**EUROPE:** Regular rounds of precipitation will continue throughout Europe this week. The most frequent moisture will impact the northern coast of Spain, France into portions of Germany and the Alps as well as Italy into Slovenia, Croatia, Bosnia and Montenegro into Hungary and Slovakia today through the Monday. Moisture will increase over the U.K. and into France Tuesday into Wednesday as well as southeastern portions of the continent.

**AUSTRALIA:** A restricted precipitation pattern will occur through Sunday. Summer crop production potentials will remain good after recent rainfall, but the break in moisture will be welcome for unharvested winter crops and fieldwork. ☐ Conditions will not be completely dry ☐ Rounds of showers will linger over the eastern coast of New South Wales and southeastern Queensland back into the Great Dividing Range on a near daily basis. A few showers will linger over central Victoria and south-central New South Wales today.



**DISCLAIMER:** This report has been prepared by GroCapital Financial Services Pty Ltd, a wholly owned subsidiary of AFGRI Operations Limited is provided to you for information purposes only. GROCAPITAL AND AFGRI hereby certify that the views expressed in this report were obtained from sources which GROCAPITAL AND AFGRI consider to be reliable. GROCAPITAL AND AFGRI do not make any representations or give any guarantees or warranties, expressed or implied, as to the correctness, accuracy or completeness of the report. Neither GROCAPITAL AND AFGRI, nor any affiliate, nor any of their respective officers, directors, partners or employees, shall assume any liability for any losses arising from errors or omissions in the opinions, forecasts or information, irrespective of whether there has been any negligence by GroCapital and AFGRI, their affiliate, or their respective officers, directors, partners or employees, regardless of whether such damages were foreseen or unforeseen. The information contained in this report is confidential and may be subject to legal privilege. This report is not intended to not should it be taken to create any legal relations or contractual relations.