



# **Weather Report**

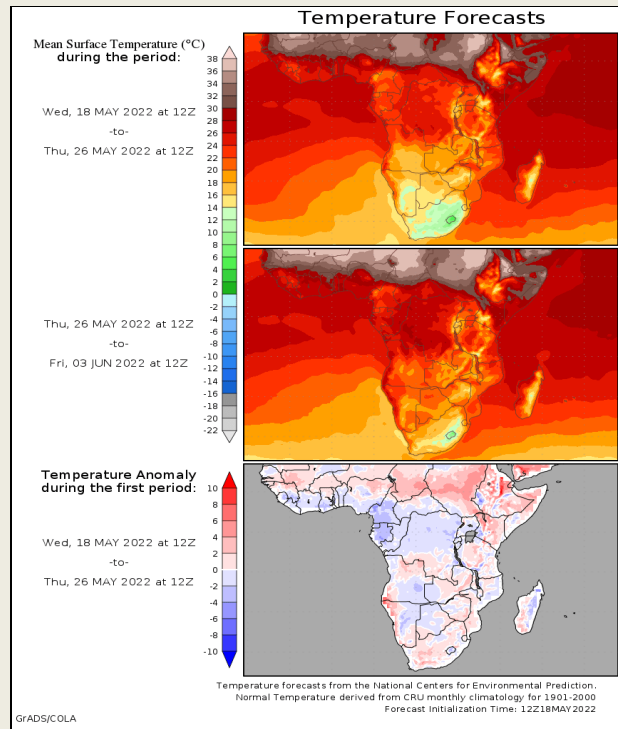
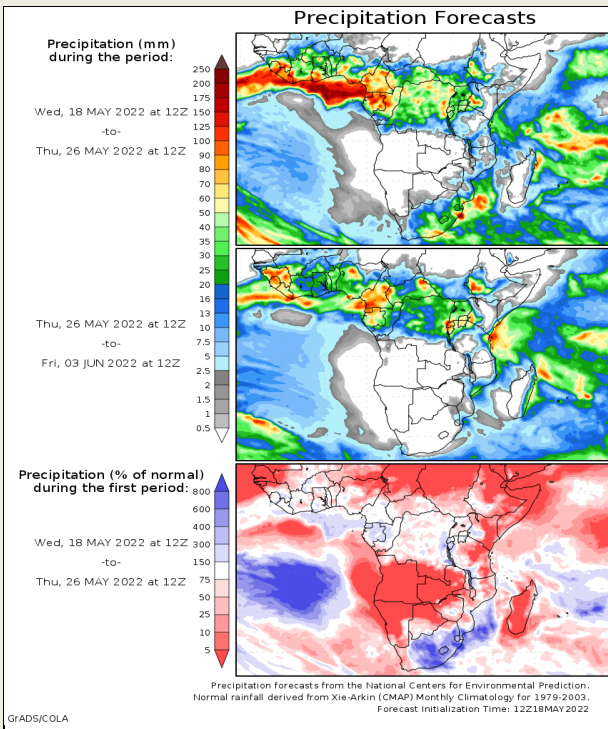
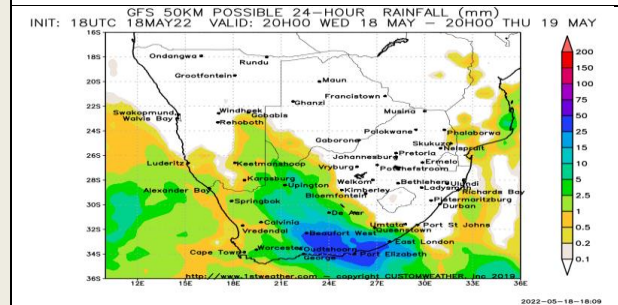
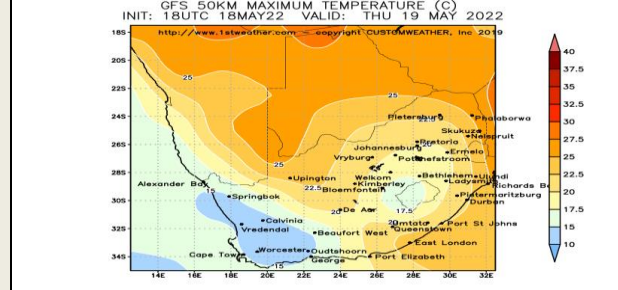
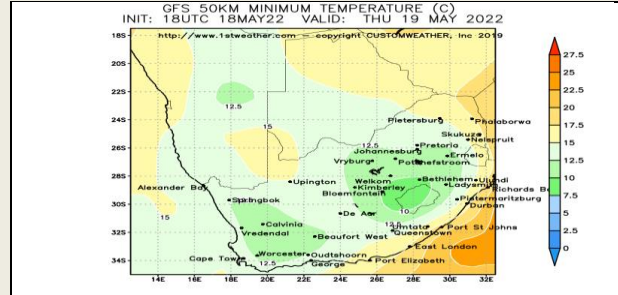
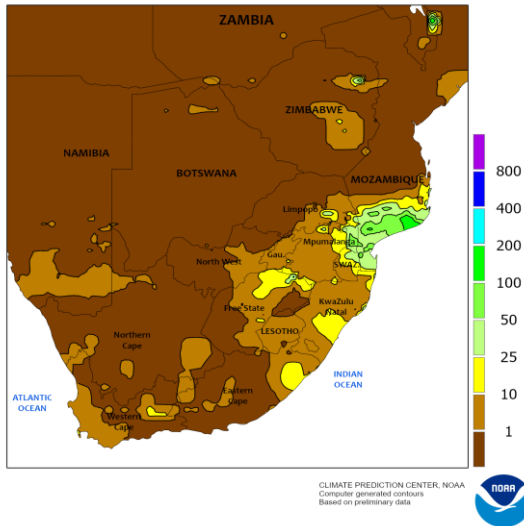
## **19 May 2022**

# South Africa - Weather

A frontal boundary will bring rain to portions of South Africa's main production areas later this week and weekend. The rain will likely slow harvesting and general fieldwork at times, though producers will have several opportunities for fieldwork between rain events. Precipitation totals will also be too light to significantly impact crop quality. Winter wheat planting and establishment conditions may improve in Free State and neighboring areas while Western Cape will still need more rain for ideal wheat prospects. South Africa's crop production areas will see a mix of rain and sunshine during the coming week

- o Much of the rain will evolve Wednesday into this weekend as a strong frontal boundary advances over the country
- o Moisture totals by next Tuesday morning will range from 0.50-2.00" in Eastern Cape, Natal, Mpumalanga, Free State, and southern and eastern Limpopo
- o Local rain totals over 3.00" are also expected in Eastern Cape and Natal
- o Most other areas will receive 0.10-0.75" of rain with drier pockets
- o South Africa will potentially be drier biased May 25 - 31
- o Brief periods of light rain will still occur in the eastern half of the country

SOUTH AFRICA  
Total Precipitation(mm)  
May 8 - 14, 2022



DISCLAIMER: This report has been prepared by GroCapital Financial Services Pty Ltd, a wholly owned subsidiary of AFGRI Operations Limited. It is provided to you for information purposes only. GROCAPITAL AND AFGRI hereby certify that the views expressed in this report were obtained from sources which GROCAPITAL AND AFGRI consider to be reliable. GROCAPITAL AND AFGRI do not make any representations or give any guarantees or warranties, expressed or implied, as to the correctness, accuracy or completeness of the report. Neither GROCAPITAL AND AFGRI, nor any affiliate, nor any of their respective officers, directors, partners or employees, shall assume any liability for any losses arising from errors or omissions in the opinions, forecasts or information, irrespective of whether there has been any negligence by GroCapital and AFGRI, their affiliate, or their respective officers, directors, partners or employees, regardless of whether such damages were foreseen or unforeseen. The information contained in this report is confidential and may be subject to legal privilege. This report is not intended to not should it be taken to create any legal relations or contractual relations.

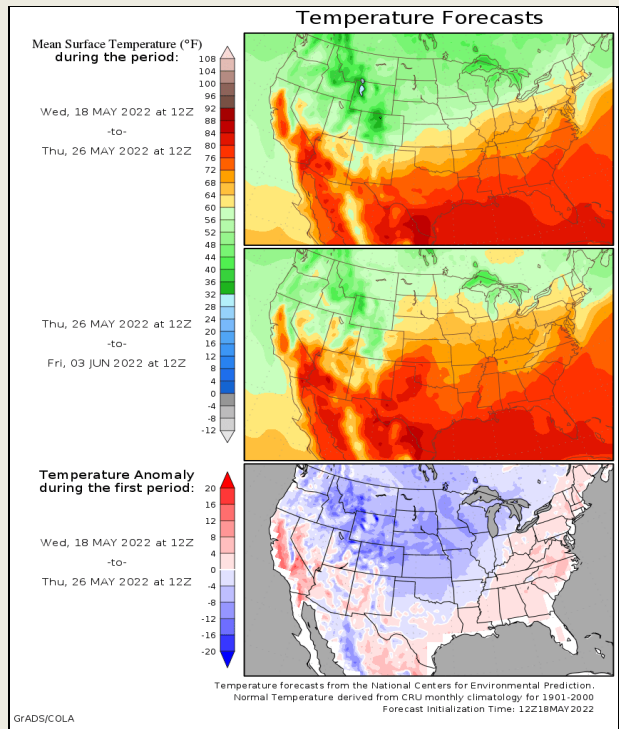
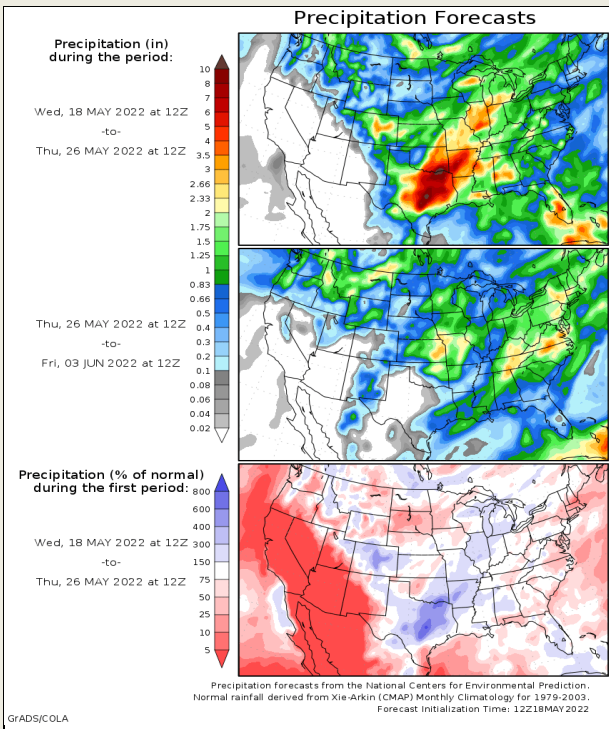
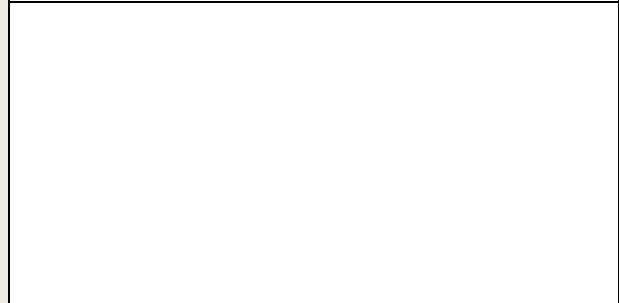
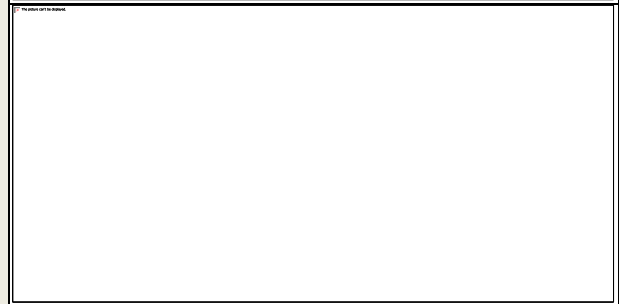
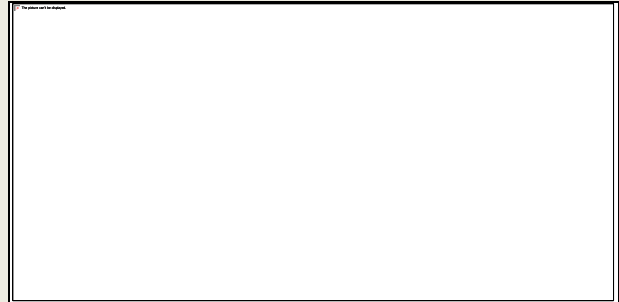
## United States of America - Weather

U.S. MIDWEST: The Midwest will see a mix of rain and sunshine during the next two weeks that will disrupt planting while keeping conditions favorable for newly planted crops.

- o Planting will advance between rounds of rain, but rain will fall frequently enough that dry periods in most areas longer than a couple days will be rare.
- o The far northwestern Corn Belt will see colder than normal temperatures that will limit drying rates and keep improvements in conditions for fieldwork gradual.

U.S. DELTA AND SOUTHEAST: The Delta and the Southeast will continue to see good planting progress through the next two weeks as only one round of organized rain is expected with today's forecast drier than what was advertised Monday for May 25-26.

- o Topsoil moisture is low enough in most areas that rain expected Saturday into Monday will be important in keeping soil moisture adequate for newly planted crops with shallow root systems while subsoil moisture is favorable and will be supportive of crops with deeper root systems. Northern Florida into southern Georgia and southern South Carolina are drier than other areas and rain Saturday into Monday will be more important to crops there than in the remainder of the region.



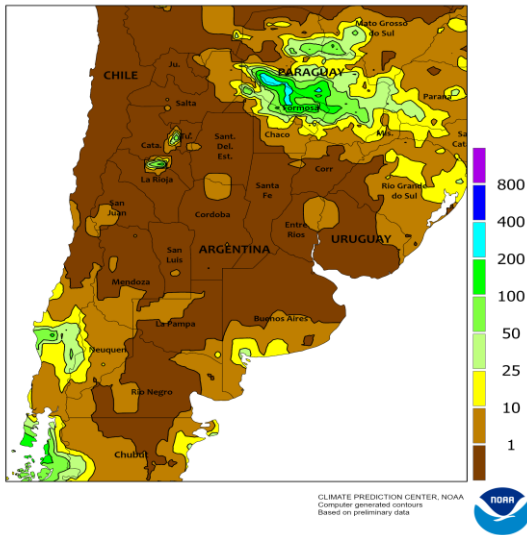
**DISCLAIMER:** This report has been prepared by GroCapital Financial Services Pty Ltd, a wholly owned subsidiary of AFGRI Operations Limited is provided to you for information purposes only. GROCAPITAL AND AFGRI hereby certify that the views expressed in this report were obtained from sources which GROCAPITAL AND AFGRI consider to be reliable. GROCAPITAL AND AFGRI do not make any representations or give any guarantees or warranties, expressed or implied, as to the correctness, accuracy or completeness of the report. Neither GROCAPITAL AND AFGRI, nor any affiliate, nor any of their respective officers, directors, partners or employees, shall assume any liability for any losses arising from errors or omissions in the opinions, forecasts or information, irrespective of whether there has been any negligence by GroCapital and AFGRI, their affiliate, or their respective officers, directors, partners or employees, regardless of whether such damages were foreseen or unforeseen. The information contained in this report is confidential and may be subject to legal privilege. This report is not intended to not should it be taken to create any legal relations or contractual relations.

# South America - Weather

**BRAZIL:** Mato Grosso and Goias will see little rain during the next two weeks and stress to the Safinha corn crop will increase while yields decline. Rain in the region is typically minimal in May and it would take an unseasonable rain event to induce notable improvements in soil moisture and crop conditions. The remainder of Brazil will also see a restricted rainfall pattern through most of the next two weeks and fieldwork should advance well around a couple rounds of rain in Paraguay and portions of central and southern Brazil. Frost and a few light freezes will occur in portions of southern Brazil this week and some corn in Parana may be harmed by the cold with most of the crop not likely to be seriously damaged.

**ARGENTINA:** Argentina will be dry through most of the next two weeks and fieldwork should advance well while most areas should have enough soil moisture to support the needs of crops. Exceptions will occur from San Luis to a large part of Cordoba and southern Santiago del Estero where subsoil moisture is short and immature crops should see rising levels of stress until rain returns.

ARGENTINA  
Total Precipitation(mm)  
May 8 - 14, 2022

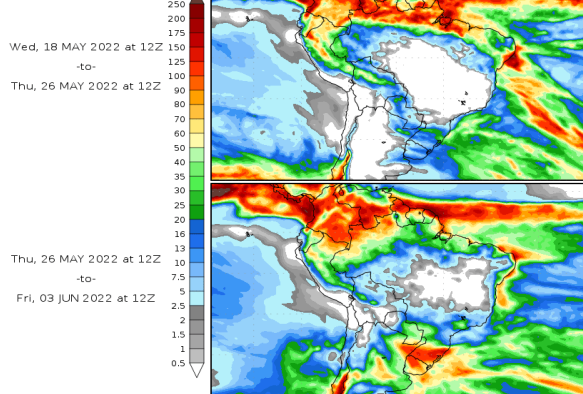


10 20 30 40 50 60 70 80 90 (%)

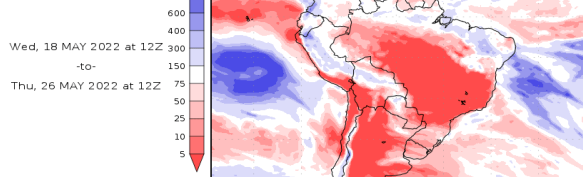
-20° -10° 0° 10° 20° 30° 40° (C)

## Precipitation Forecasts

Precipitation (mm) during the period:



Precipitation (% of normal) during the first period:

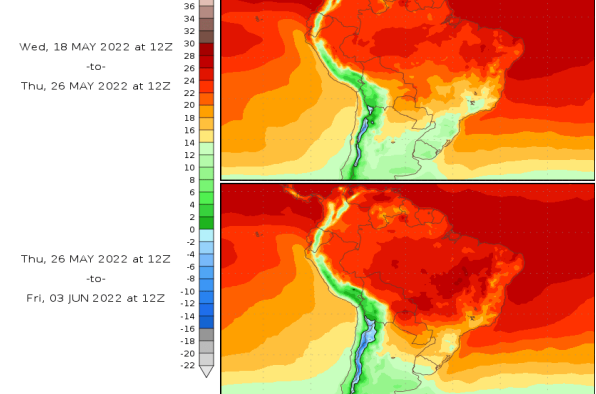


Precipitation forecasts from the National Centers for Environmental Prediction.  
Normal rainfall derived from Xie-Arkin (CMAP) Monthly Climatology for 1979-2003.  
Forecast Initialization Time: 12Z18MAY2022

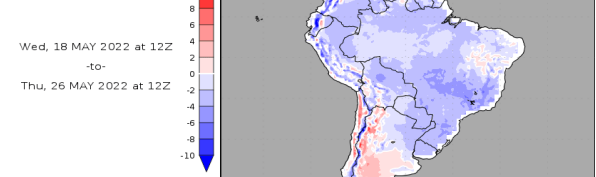
GRADS/COLA

## Temperature Forecasts

Mean Surface Temperature (°C) during the period:



Temperature Anomaly during the first period:



Temperature forecasts from the National Centers for Environmental Prediction.  
Normal Temperature derived from CRU monthly climatology for 1901-2000  
Forecast Initialization Time: 12Z18MAY2022

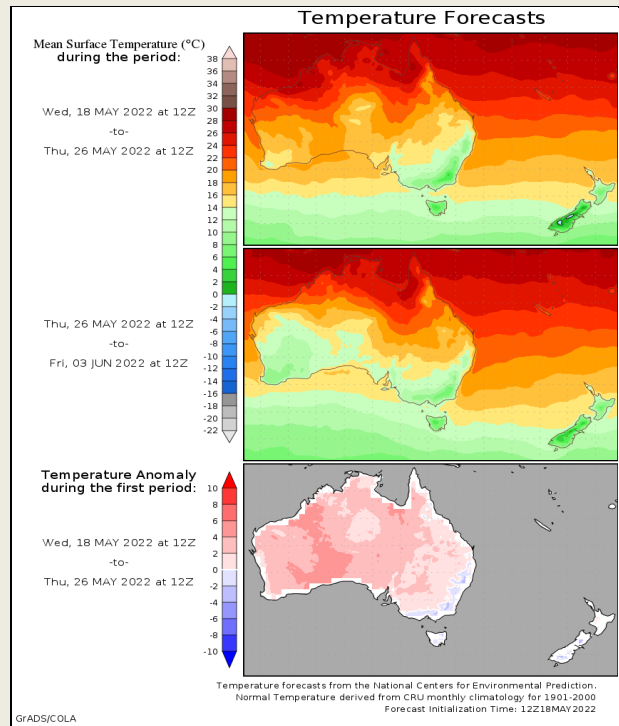
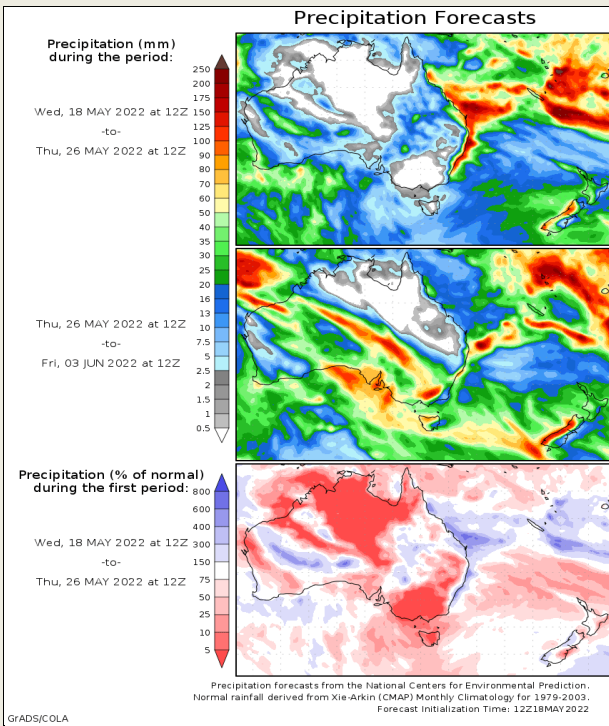
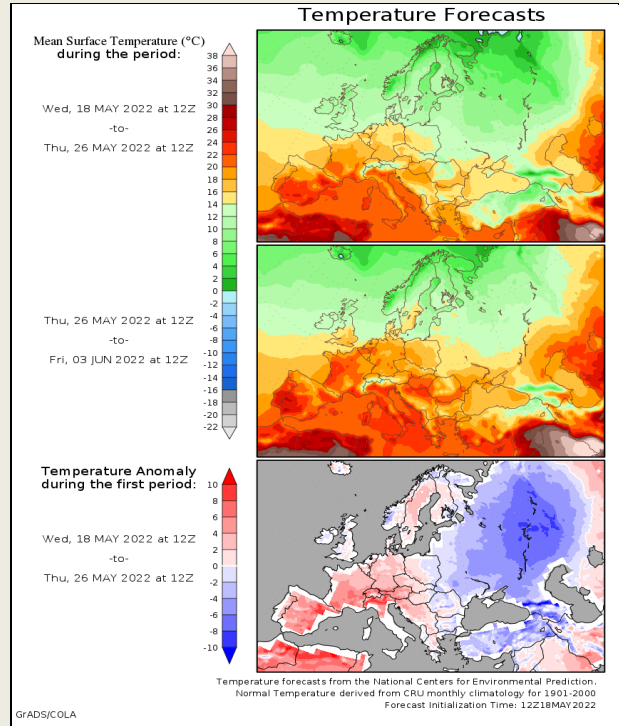
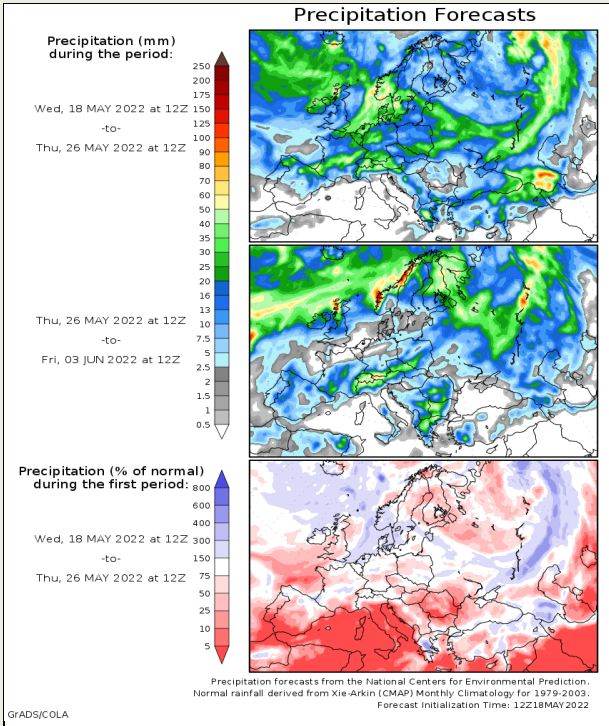
GRADS/COLA

**DISCLAIMER:** This report has been prepared by GroCapital Financial Services Pty Ltd, a wholly owned subsidiary of AFGRI Operations Limited is provided to you for information purposes only. GROCAPITAL AND AFGRI hereby certify that the views expressed in this report were obtained from sources which GROCAPITAL AND AFGRI consider to be reliable. GROCAPITAL AND AFGRI do not make any representations or give any guarantees or warranties, expressed or implied, as to the correctness, accuracy or completeness of the report. Neither GROCAPITAL AND AFGRI, nor any affiliate, nor any of their respective officers, directors, partners or employees, shall assume any liability for any losses arising from errors or omissions in the opinions, forecasts or information, irrespective of whether there has been any negligence by GroCapital and AFGRI, their affiliate, or their respective officers, directors, partners or employees, regardless of whether such damages were foreseen or unforeseen. The information contained in this report is confidential and may be subject to legal privilege. This report is not intended to not should it be taken to create any legal relations or contractual relations.

# Europe, New Zealand and Australia - Weather

**EUROPE:** Rain will be enough in the first week of the outlook for favorable field conditions with the exception of mainly Portugal, Spain, and portions of Italy where more soil moisture decline is expected. Temperatures in southwestern Europe will also be quite warm which will lead to high evaporation rates. Northeastern areas will be cooler in comparison with lower evaporation rates.

**AUSTRALIA:** The weather pattern through the first week of the outlook should be mostly favorable for the region. Rain in Western Australia will further improve soil moisture for winter crop production. Rain in northern crop areas of Queensland may lead to some fieldwork delays. South Australia could use greater rain due to very short soil moisture. The outlook for this year's planting season remains very good.



**DISCLAIMER:** This report has been prepared by GroCapital Financial Services Pty Ltd, a wholly owned subsidiary of AFGRI Operations Limited is provided to you for information purposes only. GROCAPITAL AND AFGRI hereby certify that the views expressed in this report were obtained from sources which GROCAPITAL AND AFGRI consider to be reliable. GROCAPITAL AND AFGRI do not make any representations or give any guarantees or warranties, expressed or implied, as to the correctness, accuracy or completeness of the report. Neither GROCAPITAL AND AFGRI, nor any affiliate, nor any of their respective officers, directors, partners or employees, shall assume any liability for any losses arising from errors or omissions in the opinions, forecasts or information, irrespective of whether there has been any negligence by GroCapital and AFGRI, their affiliate, or their respective officers, directors, partners or employees, regardless of whether such damages were foreseen or unforeseen. The information contained in this report is confidential and may be subject to legal privilege. This report is not intended to not should it be taken to create any legal relations or contractual relations.