



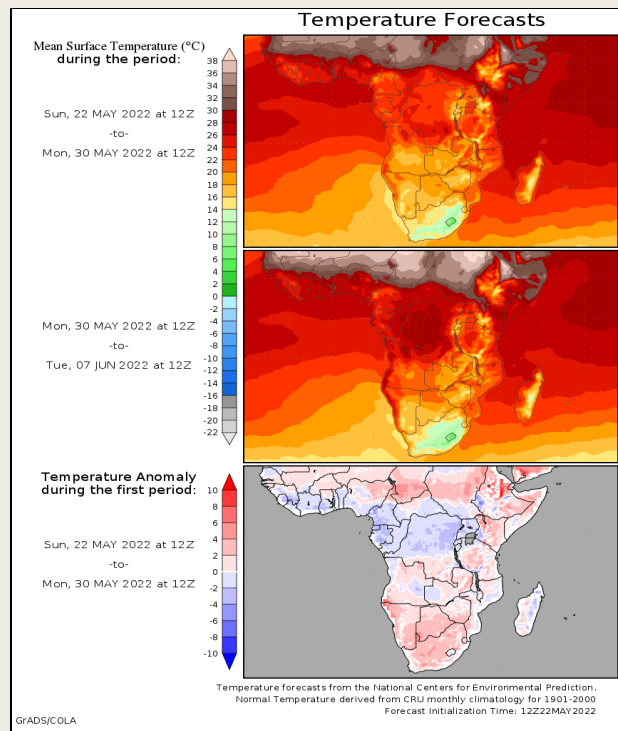
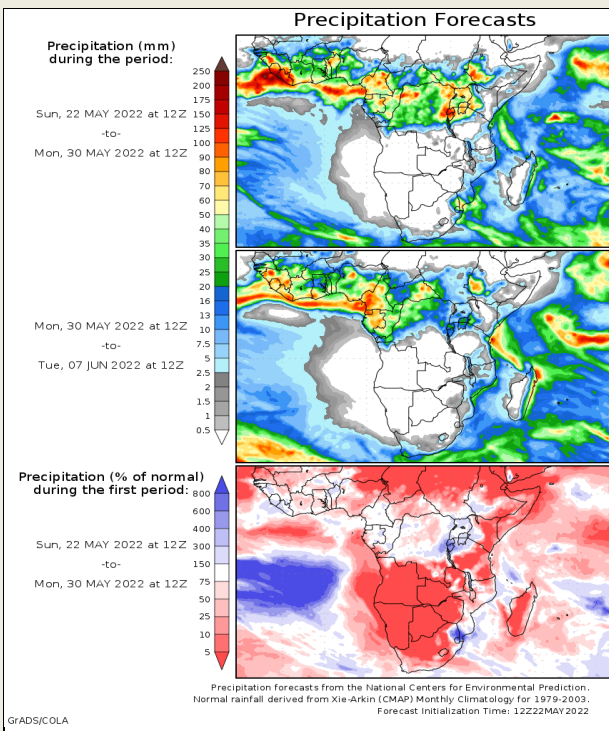
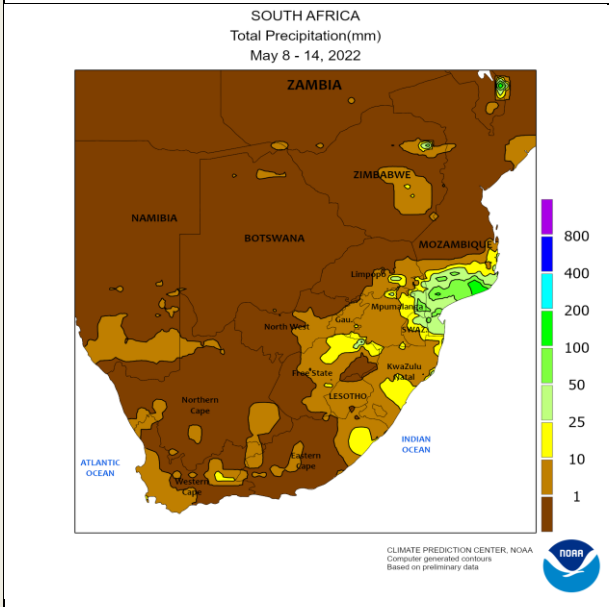
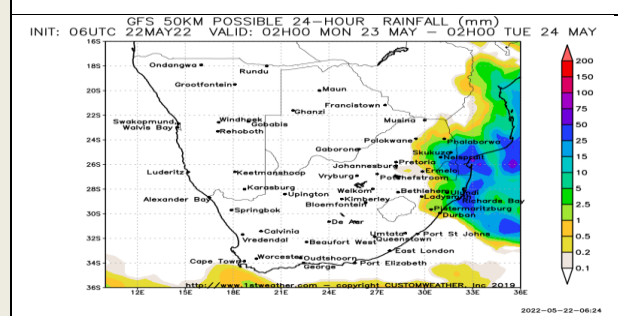
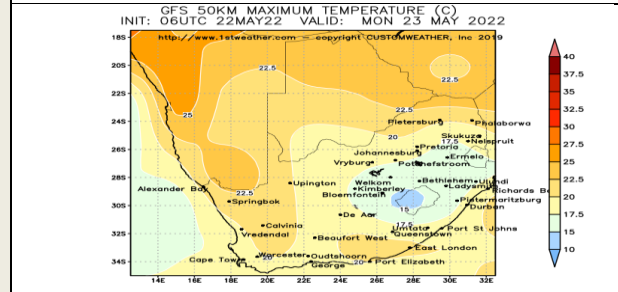
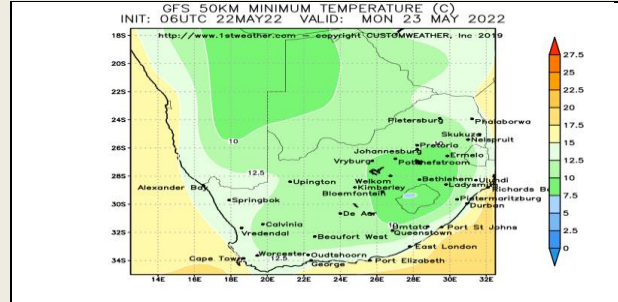
Weather Report

22 May 2022

South Africa - Weather

A frontal boundary will continue to bring rain to South Africa through early Monday. The rain will likely be enough to slow or delay harvesting at times. Drier weather later next week will otherwise firm the ground and promote more aggressive harvesting. Free State and Northern Cape will welcome the rain as many producers are planting winter wheat. Western Cape needs to see a boost in precipitation to support ideal planting and establishment. Central and eastern South Africa will receive rain through early Monday as a frontal boundary advances over the country

- o Drier weather is then expected later next week
- o Moisture totals by next Friday morning will range from 0.75-4.00" in most locations with locally greater amounts in Limpopo and Mpumalanga
- Western South Africa will be drier biased through the end of next week
- o Brief periods of light rain will still occur, though rainfall will generally be lost to evaporation
- South Africa will be drier biased May 28 – June 3
- o Brief periods of light rain will still be possible in most locations



DISCLAIMER: This report has been prepared by GroCapital Financial Services Pty Ltd, a wholly owned subsidiary of AFGRI Operations Limited. It is provided to you for information purposes only. GROCAPITAL AND AFGRI hereby certify that the views expressed in this report were obtained from sources which GROCAPITAL AND AFGRI consider to be reliable. GROCAPITAL AND AFGRI do not make any representations or give any guarantees or warranties, expressed or implied, as to the correctness, accuracy or completeness of the report. Neither GROCAPITAL AND AFGRI, nor any affiliate, nor any of their respective officers, directors, partners or employees, shall assume any liability for any losses arising from errors or omissions in the opinions, forecasts or information, irrespective of whether there has been any negligence by GroCapital and AFGRI, their affiliate, or their respective officers, directors, partners or employees, regardless of whether such damages were foreseen or unforeseen. The information contained in this report is confidential and may be subject to legal privilege. This report is not intended to not should it be taken to create any legal relations or contractual relations.

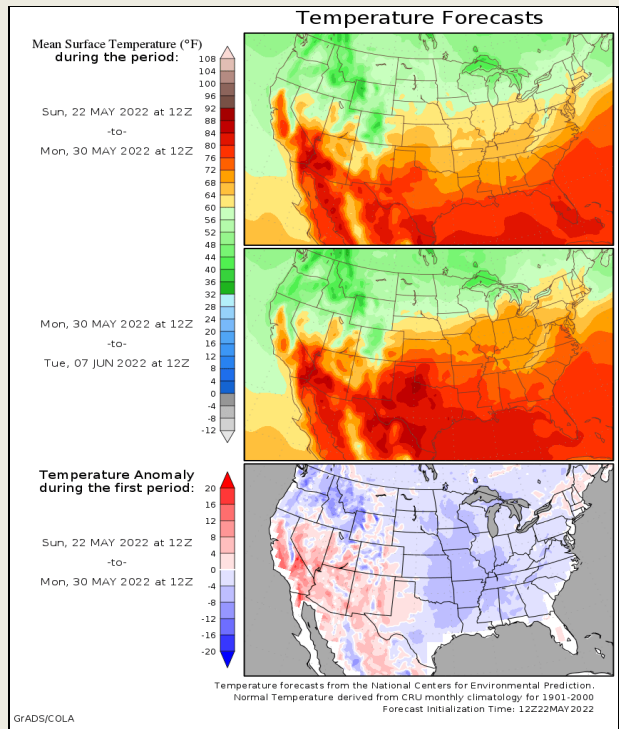
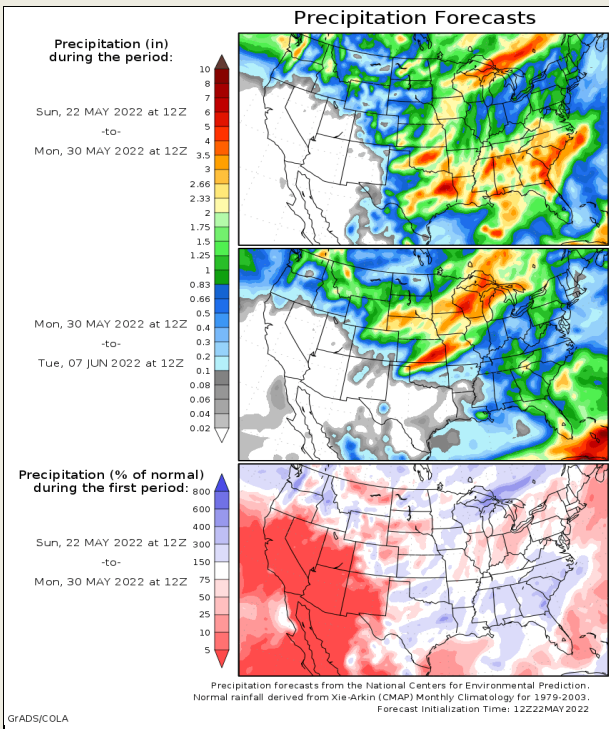
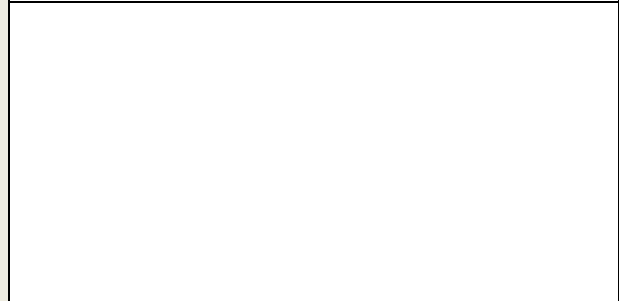
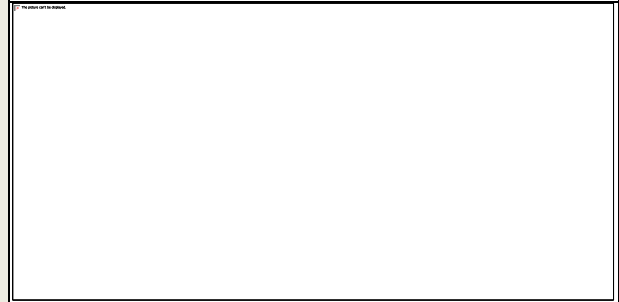
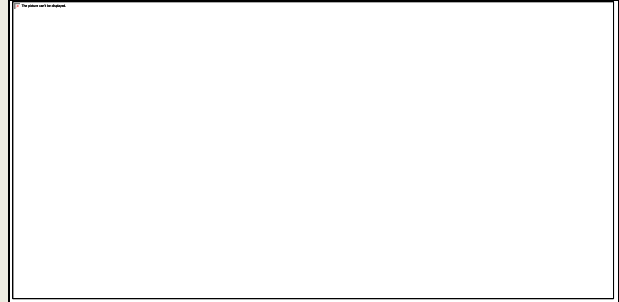
United States of America - Weather

U.S. MIDWEST: The Midwest will see a mix of rain and sunshine during the next two weeks that will disrupt planting while keeping conditions favorable for newly planted crops.

- o Planting will advance between rounds of rain, but rain will fall frequently enough that dry periods in most areas longer than a couple days will be rare.
- o The far northwestern Corn Belt will see colder than normal temperatures that will limit drying rates and keep improvements in conditions for fieldwork gradual.

U.S. DELTA AND SOUTHEAST: The Delta and the Southeast will continue to see good planting progress through the next two weeks as only one round of organized rain is expected with today's forecast drier than what was advertised Monday for May 25-26.

- o Topsoil moisture is low enough in most areas that rain expected Saturday into Monday will be important in keeping soil moisture adequate for newly planted crops with shallow root systems while subsoil moisture is favorable and will be supportive of crops with deeper root systems. Northern Florida into southern Georgia and southern South Carolina are drier than other areas and rain Saturday into Monday will be more important to crops there than in the remainder of the region.



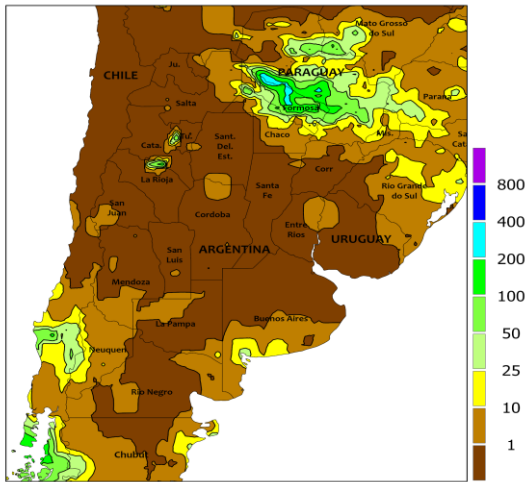
DISCLAIMER: This report has been prepared by GroCapital Financial Services Pty Ltd, a wholly owned subsidiary of AFGRI Operations Limited is provided to you for information purposes only. GROCAPITAL AND AFGRI hereby certify that the views expressed in this report were obtained from sources which GROCAPITAL AND AFGRI consider to be reliable. GROCAPITAL AND AFGRI do not make any representations or give any guarantees or warranties, expressed or implied, as to the correctness, accuracy or completeness of the report. Neither GROCAPITAL AND AFGRI, nor any affiliate, nor any of their respective officers, directors, partners or employees, shall assume any liability for any losses arising from errors or omissions in the opinions, forecasts or information, irrespective of whether there has been any negligence by GroCapital and AFGRI, their affiliate, or their respective officers, directors, partners or employees, regardless of whether such damages were foreseen or unforeseen. The information contained in this report is confidential and may be subject to legal privilege. This report is not intended to not should it be taken to create any legal relations or contractual relations.

South America - Weather

BRAZIL: Mato Grosso and Goias will see little rain during the next two weeks and stress to the Safirinha corn crop will increase while yields decline. Rain in the region is typically minimal in May and it would take an unseasonable rain event to induce notable improvements in soil moisture and crop conditions. The remainder of Brazil will also see a restricted rainfall pattern through most of the next two weeks and fieldwork should advance well around a couple rounds of rain in Paraguay and portions of central and southern Brazil. Frost and a few light freezes will occur in portions of southern Brazil this week and some corn in Parana may be harmed by the cold with most of the crop not likely to be seriously damaged.

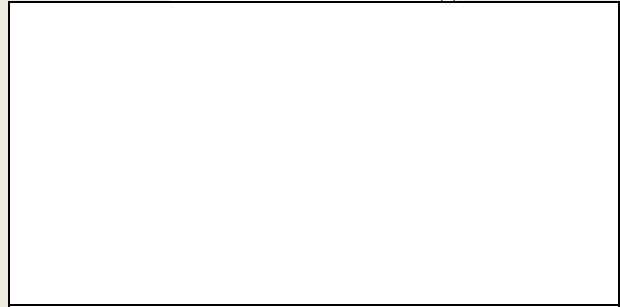
ARGENTINA: Outside of some rain in the far south Sunday into Monday, mostly dry weather will continue through Tuesday and fieldwork should advance well.
o A few immature crops in western Argentina will be stressed by a lack of soil moisture while soil moisture is great enough to support most other crops. The rain will interrupt fieldwork, but some fieldwork should advance around the precipitation while the moisture will be good for winter crops.

ARGENTINA
Total Precipitation(mm)
May 8 - 14, 2022

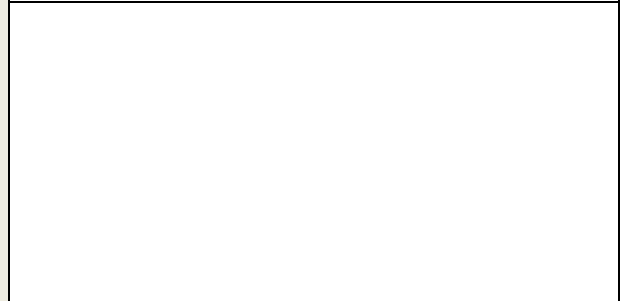


CLIMATE PREDICTION CENTER, NOAA
Computer generated contours
Based on preliminary data

10 20 30 40 50 60 70 80 90 (%)

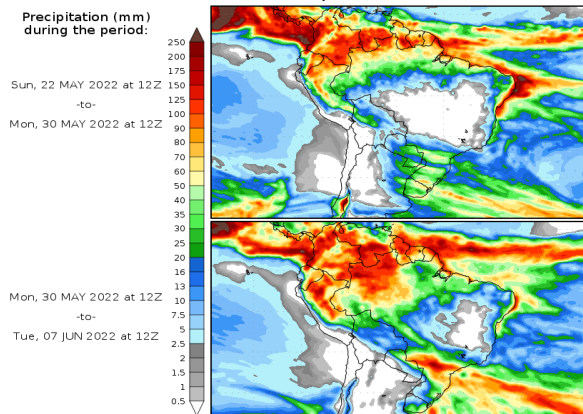


-20° -10° 0° 10° 20° 30° 40° (C)



Precipitation Forecasts

Precipitation (mm) during the period:

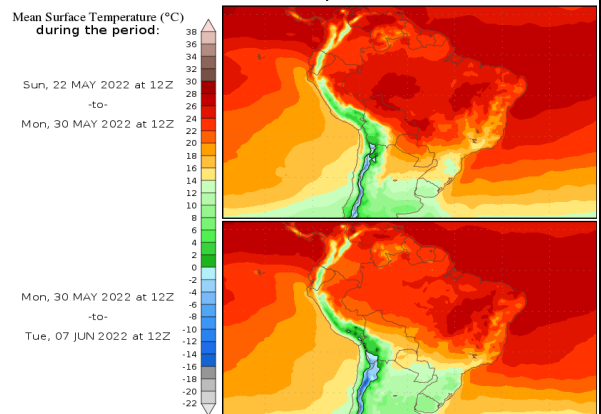


Precipitation forecasts from the National Centers for Environmental Prediction.
Normal rainfall derived from Xie-Arkin (CMAP) Monthly Climatology for 1979-2003.
Forecast Initialization Time: 12Z22MAY2022

GRADS/COLA

Temperature Forecasts

Mean Surface Temperature (°C) during the period:



Temperature forecasts from the National Centers for Environmental Prediction.
Normal Temperature derived from CRU monthly climatology for 1901-2000
Forecast Initialization Time: 12Z22MAY2022

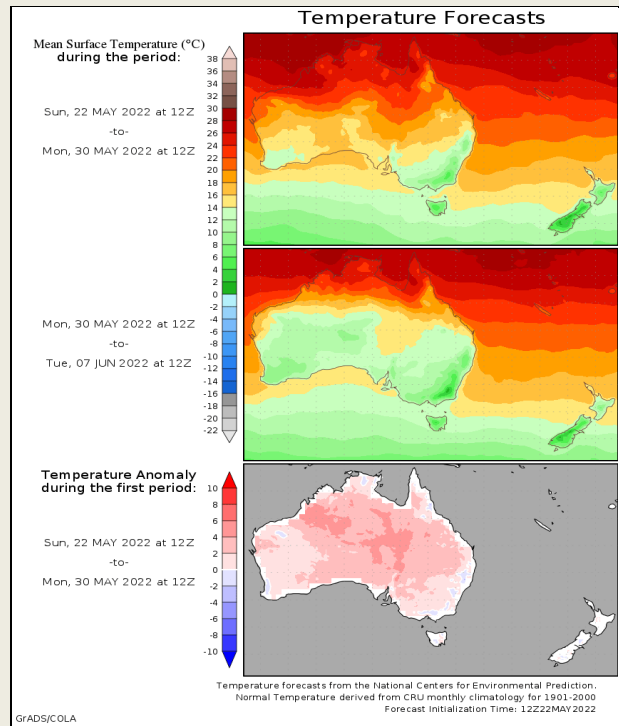
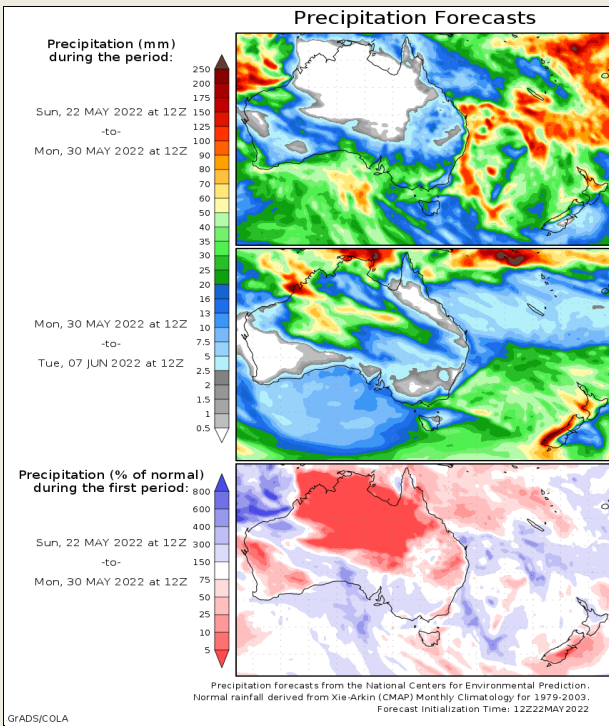
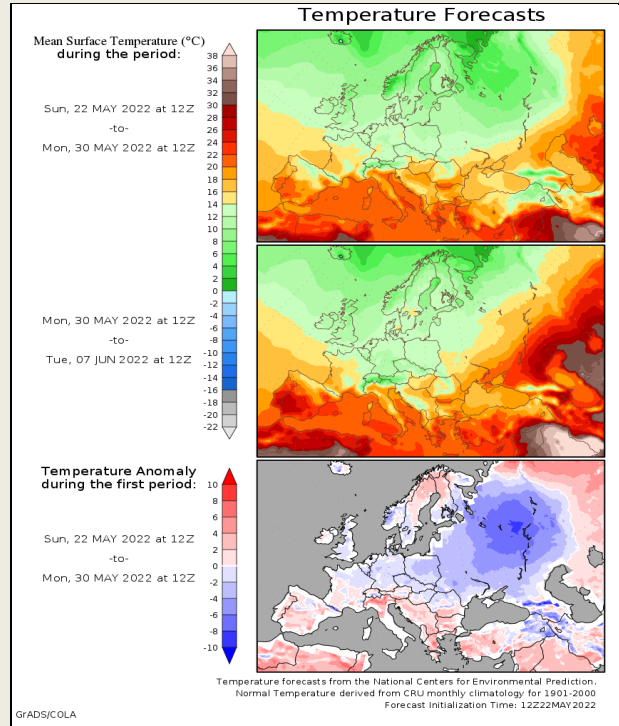
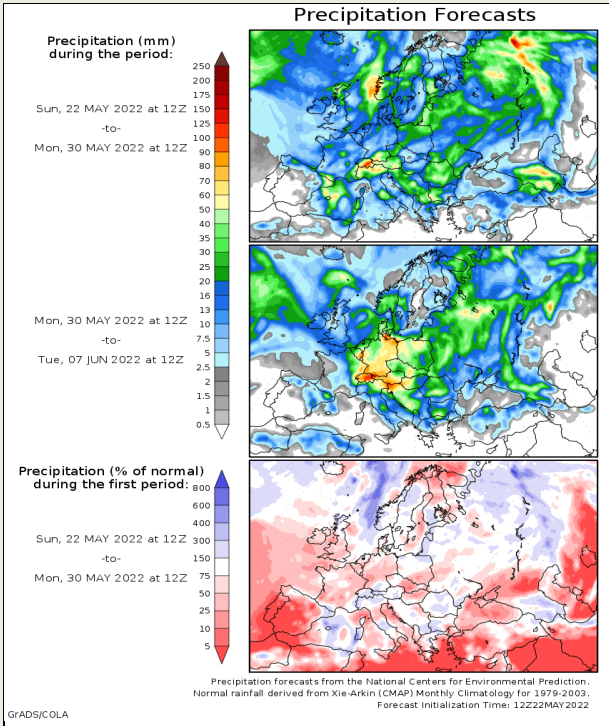
GRADS/COLA

DISCLAIMER: This report has been prepared by GroCapital Financial Services Pty Ltd, a wholly owned subsidiary of AFGRI Operations Limited is provided to you for information purposes only. GROCAPITAL AND AFGRI hereby certify that the views expressed in this report were obtained from sources which GROCAPITAL AND AFGRI consider to be reliable. GROCAPITAL AND AFGRI do not make any representations or give any guarantees or warranties, expressed or implied, as to the correctness, accuracy or completeness of the report. Neither GROCAPITAL AND AFGRI, nor any affiliate, nor any of their respective officers, directors, partners or employees, shall assume any liability for any losses arising from errors or omissions in the opinions, forecasts or information, irrespective of whether there has been any negligence by GroCapital and AFGRI, their affiliate, or their respective officers, directors, partners or employees, regardless of whether such damages were foreseen or unforeseen. The information contained in this report is confidential and may be subject to legal privilege. This report is not intended to not should it be taken to create any legal relations or contractual relations.

Europe, New Zealand and Australia - Weather

EUROPE: Rain will be enough in the first week of the outlook for favorable field conditions with the exception of mainly Portugal, Spain, and portions of Italy where more soil moisture decline is expected. Temperatures in southwestern Europe will also be quite warm which will lead to high evaporation rates. Northeastern areas will be cooler in comparison with lower evaporation rates.

AUSTRALIA: Rain in the first week of the outlook will be mostly favorable. The rain in southwestern Western Australia and in Queensland and New South Wales will be beneficial and support winter crops. Rain in South Australia and Victoria will be lowest. Some rain showers are expected in this part of Australia; however, South Australia in particular will need much more. Planting of wheat, barley and canola is advancing across many areas in the south and improved rainfall in the second week of the outlook will boost soil moisture for that purpose. Late season harvesting in eastern Australia will advance around brief bouts of shower activity.



DISCLAIMER: This report has been prepared by GroCapital Financial Services Pty Ltd, a wholly owned subsidiary of AFGRI Operations Limited is provided to you for information purposes only. GROCAPITAL AND AFGRI hereby certify that the views expressed in this report were obtained from sources which GROCAPITAL AND AFGRI consider to be reliable. GROCAPITAL AND AFGRI do not make any representations or give any guarantees or warranties, expressed or implied, as to the correctness, accuracy or completeness of the report. Neither GROCAPITAL AND AFGRI, nor any affiliate, nor any of their respective officers, directors, partners or employees, shall assume any liability for any losses arising from errors or omissions in the opinions, forecasts or information, irrespective of whether there has been any negligence by GroCapital and AFGRI, their affiliate, or their respective officers, directors, partners or employees, regardless of whether such damages were foreseen or unforeseen. The information contained in this report is confidential and may be subject to legal privilege. This report is not intended to not should it be taken to create any legal relations or contractual relations.