



Weather Report

21 June 2022

South Africa - Weather

Western and central South Africa will see a mix of rain and sunshine through the end of next week. The rain will continue to support a good environment for winter wheat establishment and growth. Late-season harvesting of the summer crops may otherwise advance slowly during the wettest periods. Eastern South Africa will be mostly dry and should see a good environment for aggressive late-season harvesting.

- Eastern and central South Africa will see a mix of rain and sunshine during the coming week

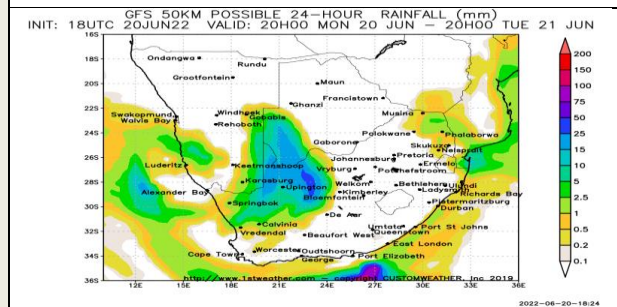
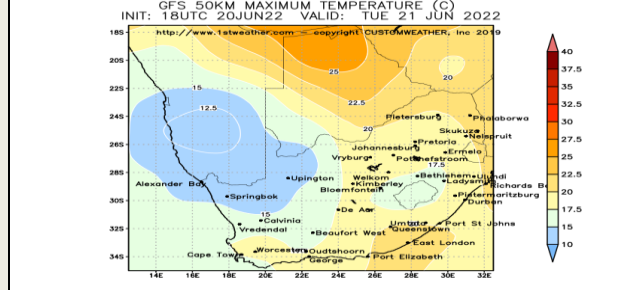
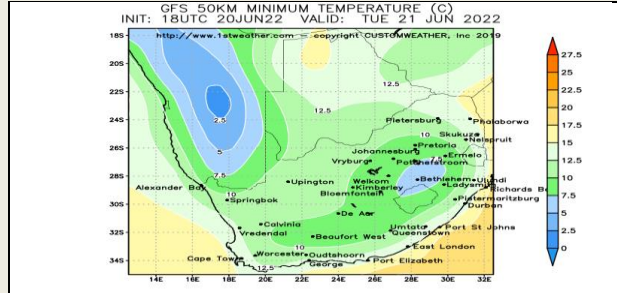
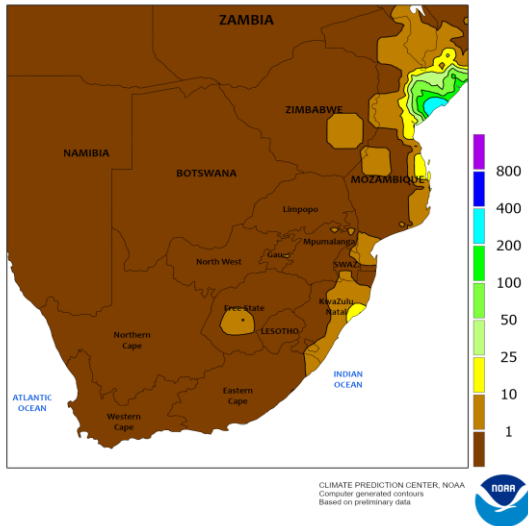
- o A frontal boundary will initially generate mostly light rain overnight tonight into Saturday
- o A strong upper-level disturbance will then support more widespread and significant rain late this weekend into the middle of next week

- ☒ Moisture totals by next Friday morning will range from 0.50-3.00" with locally greater amounts in Northern Cape and Western Cape

- ☒ Pockets in Eastern Cape and North West will also only receive 0.10-0.50" of rain

- Eastern South Africa will generally be drier biased during the coming week
- o Natal will occasionally receive light rain, though most locations will not receive enough rain to counter evaporation
- South Africa will generally be drier biased June 25 – July 1

SOUTH AFRICA
Total Precipitation(mm)
June 5 - 11, 2022



Precipitation (mm)
during the period:

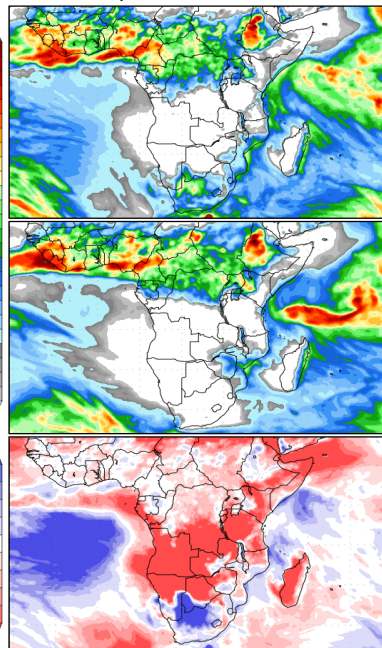
Mon, 20 JUN 2022 at 12Z
-to-
Tue, 28 JUN 2022 at 12Z

Tue, 28 JUN 2022 at 12Z
-to-
Wed, 06 JUL 2022 at 12Z

Precipitation (% of normal)
during the first period:

Mon, 20 JUN 2022 at 12Z
-to-
Tue, 28 JUN 2022 at 12Z

Precipitation Forecasts



GRADS/COLA

Mean Surface Temperature (°C)
during the period:

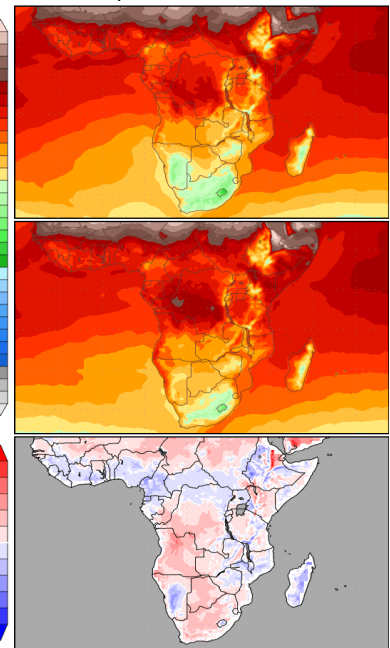
Mon, 20 JUN 2022 at 12Z
-to-
Tue, 28 JUN 2022 at 12Z

Tue, 28 JUN 2022 at 12Z
-to-
Wed, 06 JUL 2022 at 12Z

Temperature Anomaly
during the first period:

Mon, 20 JUN 2022 at 12Z
-to-
Tue, 28 JUN 2022 at 12Z

Temperature Forecasts



GRADS/COLA

DISCLAIMER: This report has been prepared by GroCapital Financial Services Pty Ltd, a wholly owned subsidiary of AFGRI Operations Limited. It is provided to you for information purposes only. GROCAPITAL AND AFGRI hereby certify that the views expressed in this report were obtained from sources which GROCAPITAL AND AFGRI consider to be reliable. GROCAPITAL AND AFGRI do not make any representations or give any guarantees or warranties, expressed or implied, as to the correctness, accuracy or completeness of the report. Neither GROCAPITAL AND AFGRI, nor any affiliate, nor any of their respective officers, directors, partners or employees, shall assume any liability for any losses arising from errors or omissions in the opinions, forecasts or information, irrespective of whether there has been any negligence by GroCapital and AFGRI, their affiliate, or their respective officers, directors, partners or employees, regardless of whether such damages were foreseen or unforeseen. The information contained in this report is confidential and may be subject to legal privilege. This report is not intended to and should not be taken to create any legal relations or contractual relations.

United States of America - Weather

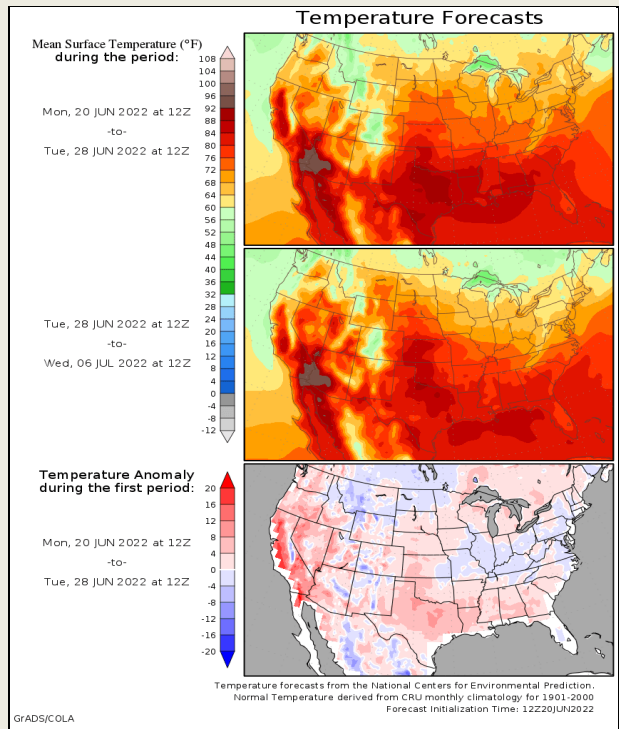
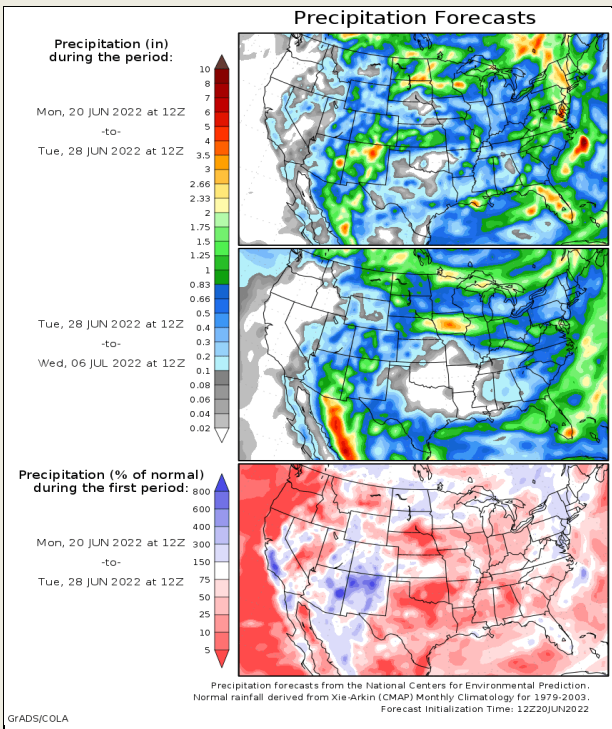
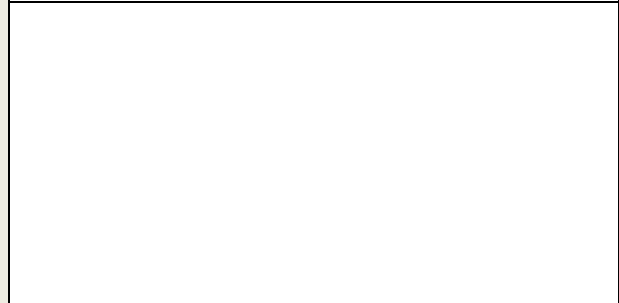
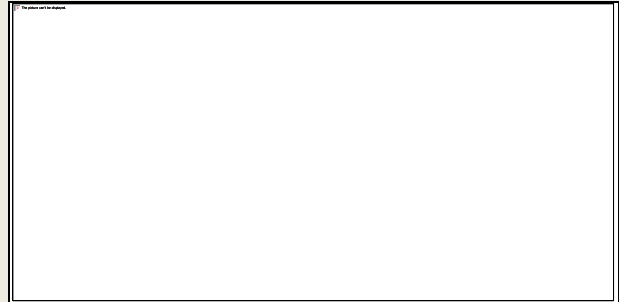
U.S. MIDWEST: Warm to hot temperatures will be common through at least the next ten days and that will cause some stress to crops while a restricted rainfall pattern and rapid drying during much of the next two weeks will raise concerns over a lack of soil moisture rising levels of crop stress in July.

- o Planting should soon be completed in most areas.

o Although the topsoil will quickly dry down during the next two weeks, subsoil moisture will adequately support crop development and most crops should remain favorably rated during the period.

U.S. DELTA AND SOUTHEAST: Warm to hot temperatures through at least the next week and infrequent rain during the next two weeks will lead to significant drying along with some stress to crops due to the heat and some moisture stress in the drier areas while most areas will have enough subsoil moisture to support crops through the end of the month.

o A large part of the Delta and the Southeast will receive rain through Friday and the moisture will be beneficial and will buy crops more time before stress increases.



DISCLAIMER: This report has been prepared by GroCapital Financial Services Pty Ltd, a wholly owned subsidiary of AFGRI Operations Limited is provided to you for information purposes only. GROCAPITAL AND AFGRI hereby certify that the views expressed in this report were obtained from sources which GROCAPITAL AND AFGRI consider to be reliable. GROCAPITAL AND AFGRI do not make any representations or give any guarantees or warranties, expressed or implied, as to the correctness, accuracy or completeness of the report. Neither GROCAPITAL AND AFGRI, nor any affiliate, nor any of their respective officers, directors, partners or employees, shall assume any liability for any losses arising from errors or omissions in the opinions, forecasts or information, irrespective of whether there has been any negligence by GroCapital and AFGRI, their affiliate, or their respective officers, directors, partners or employees, regardless of whether such damages were foreseen or unforeseen. The information contained in this report is confidential and may be subject to legal privilege. This report is not intended to not should it be taken to create any legal relations or contractual relations.

South America - Weather

BRAZIL: Paraguay and southern Brazil will see regular rounds of rain and interruptions to fieldwork through June 25 while rain is restricted most often through the next two weeks elsewhere.

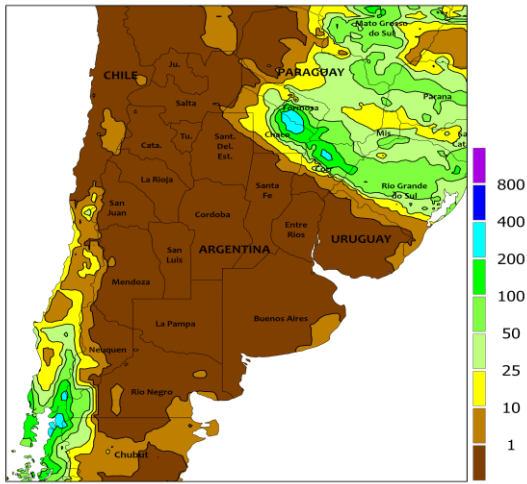
- o Southern Mato Grosso into Sao Paulo will receive at least some rain into Tuesday with Mato Grosso do Sul seeing rain as well.

ARGENTINA: Although daily showers will occur next week, fieldwork should advance well in much of the country as much of the rain will be light and not focused on any one region for an extended period of time.

- o Portions of western Argentina will see at least some rain, but the precipitation should be too light to have much of an impact on soil conditions and greater rain is needed to improve conditions for winter crops.
- o Showers will occur daily Monday into next Friday and much of the country will receive at least some rain some east-central and northeastern areas seeing 0.20-1.20" and locally more while amounts are less than 0.30" in most areas.

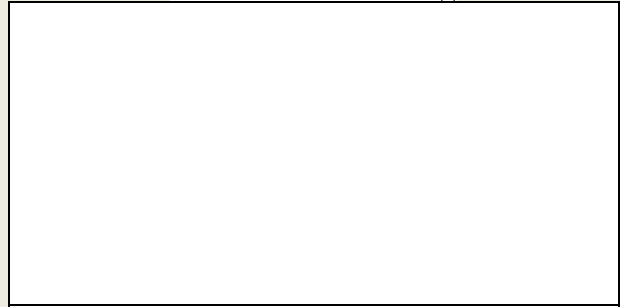
☒ Large parts of western Argentina will be left dry.

ARGENTINA
Total Precipitation(mm)
June 5 - 11, 2022

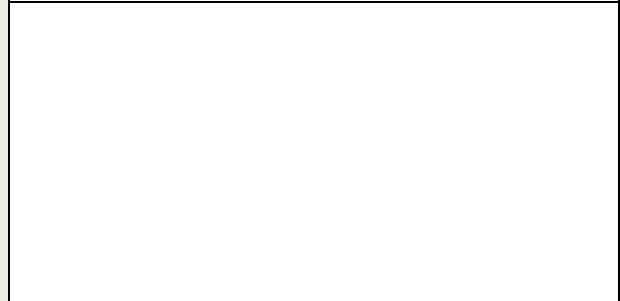


CLIMATE PREDICTION CENTER, NOAA
Computer generated contours
Based on preliminary data

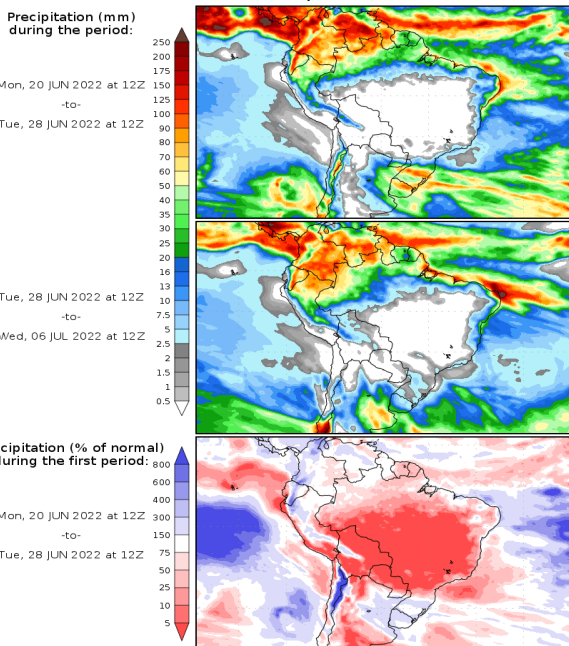
10 20 30 40 50 60 70 80 90 (%)



-20° -10° 0° 10° 20° 30° 40° (C)



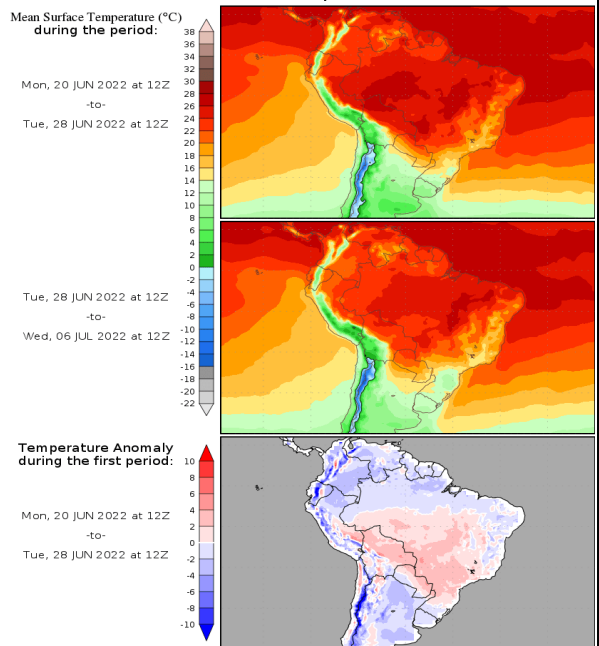
Precipitation Forecasts



Precipitation forecasts from the National Centers for Environmental Prediction.
Normal rainfall derived from Xie-Arkin (CMAP) Monthly Climatology for 1979-2003.
Forecast Initialization Time: 12Z20JUN2022

GRADS/COLA

Temperature Forecasts



Temperature forecasts from the National Centers for Environmental Prediction.
Normal Temperature derived from CRU monthly climatology for 1901-2000
Forecast Initialization Time: 12Z20JUN2022

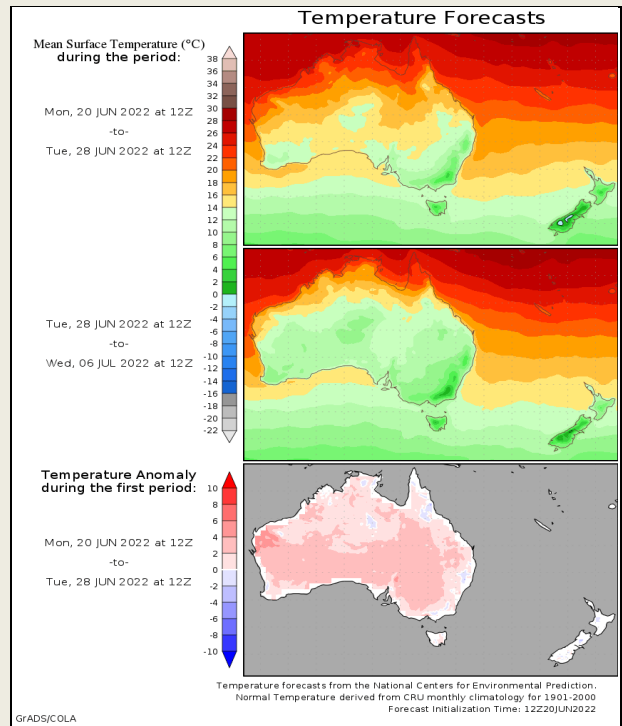
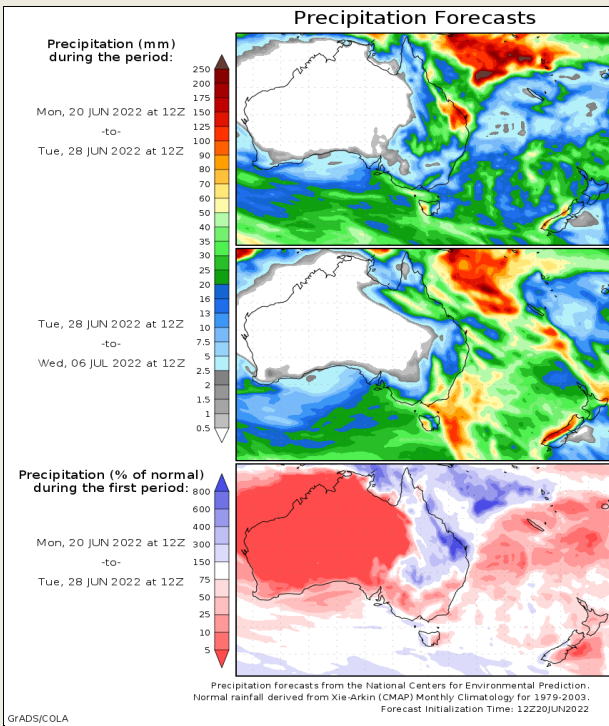
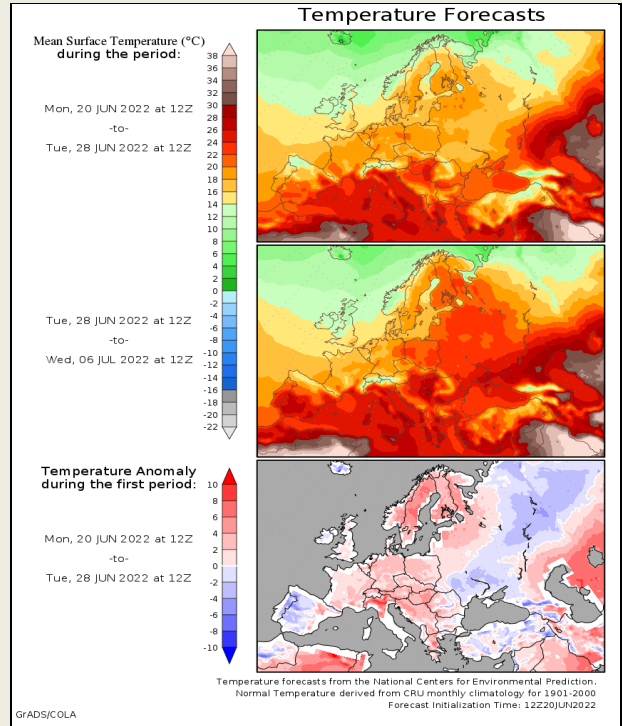
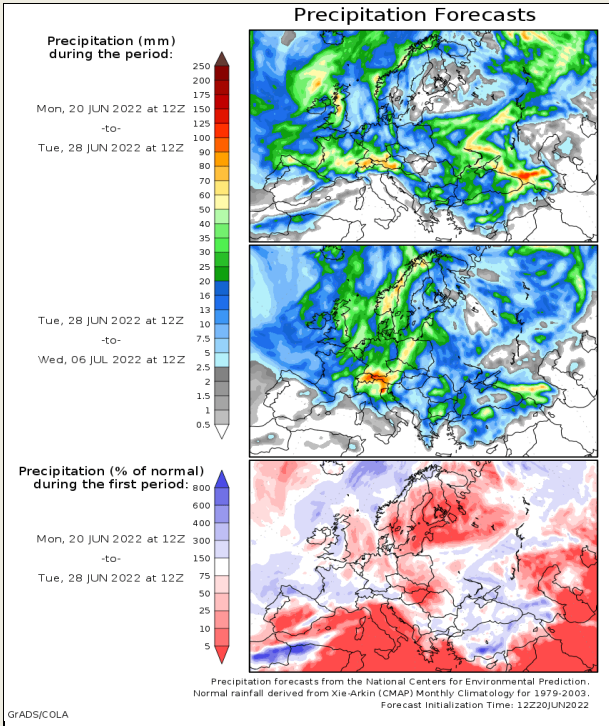
GRADS/COLA

DISCLAIMER: This report has been prepared by GroCapital Financial Services Pty Ltd, a wholly owned subsidiary of AFGRI Operations Limited is provided to you for information purposes only. GROCAPITAL AND AFGRI hereby certify that the views expressed in this report were obtained from sources which GROCAPITAL AND AFGRI consider to be reliable. GROCAPITAL AND AFGRI do not make any representations or give any guarantees or warranties, expressed or implied, as to the correctness, accuracy or completeness of the report. Neither GROCAPITAL AND AFGRI, nor any affiliate, nor any of their respective officers, directors, partners or employees, shall assume any liability for any losses arising from errors or omissions in the opinions, forecasts or information, irrespective of whether there has been any negligence by GroCapital and AFGRI, their affiliate, or their respective officers, directors, partners or employees, regardless of whether such damages were foreseen or unforeseen. The information contained in this report is confidential and may be subject to legal privilege. This report is not intended to not should it be taken to create any legal relations or contractual relations.

Europe, New Zealand and Australia - Weather

EUROPE: Enough rain is still expected in the first week of the outlook for at least some rise in topsoil moisture in most areas except Portugal, Spain, and southeastern France. Some needed rain is likely in Italy after Monday. The need for greater rainfall continues to rise in southeastern France. There is also a need for more rain in Spain and Portugal; though, this part of the region does not typically get much rain this time of year.

AUSTRALIA: Conditions will continue to be nearly ideal through at least the next seven to ten days with rain shower activity in southern production areas supporting crop development and dry conditions in Queensland being good for fieldwork advancement; though, some greater rain in Queensland will be needed later this month and in July. Wheat, barley and canola planting, emergence and establishment continues to advance swiftly and little change is still expected.



DISCLAIMER: This report has been prepared by GroCapital Financial Services Pty Ltd, a wholly owned subsidiary of AFGRI Operations Limited is provided to you for information purposes only. GROCAPITAL AND AFGRI hereby certify that the views expressed in this report were obtained from sources which GROCAPITAL AND AFGRI consider to be reliable. GROCAPITAL AND AFGRI do not make any representations or give any guarantees or warranties, expressed or implied, as to the correctness, accuracy or completeness of the report. Neither GROCAPITAL AND AFGRI, nor any affiliate, nor any of their respective officers, directors, partners or employees, shall assume any liability for any losses arising from errors or omissions in the opinions, forecasts or information, irrespective of whether there has been any negligence by GroCapital and AFGRI, their affiliate, or their respective officers, directors, partners or employees, regardless of whether such damages were foreseen or unforeseen. The information contained in this report is confidential and may be subject to legal privilege. This report is not intended to not should it be taken to create any legal relations or contractual relations.