



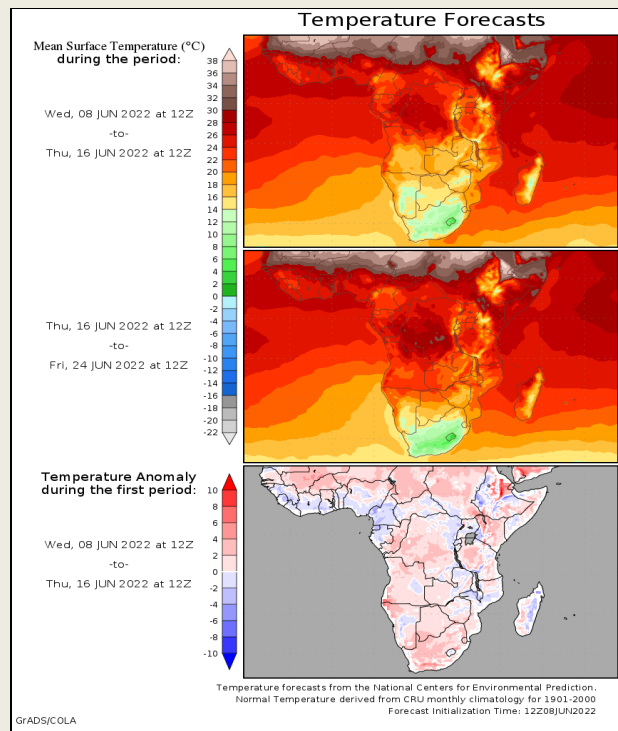
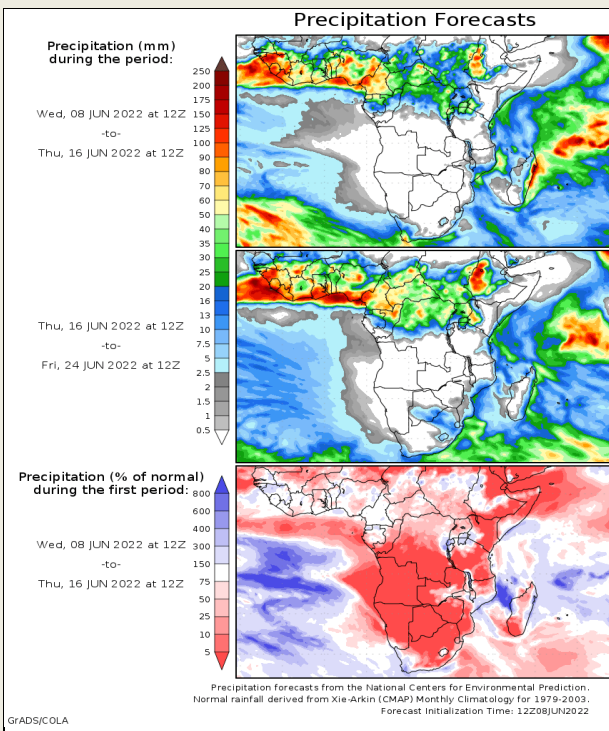
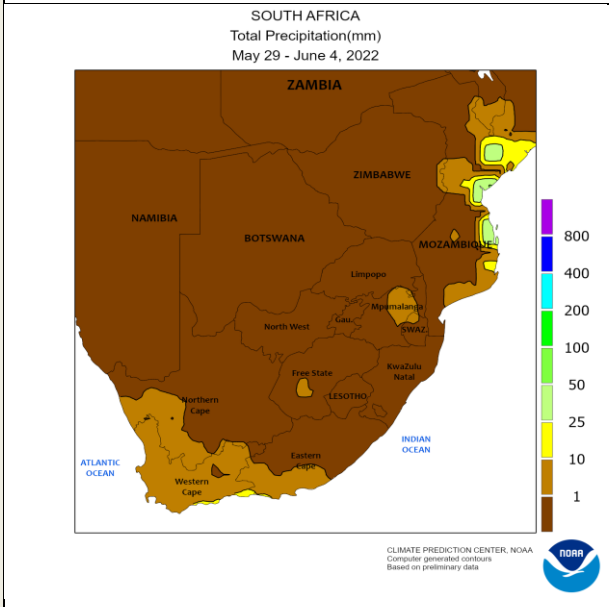
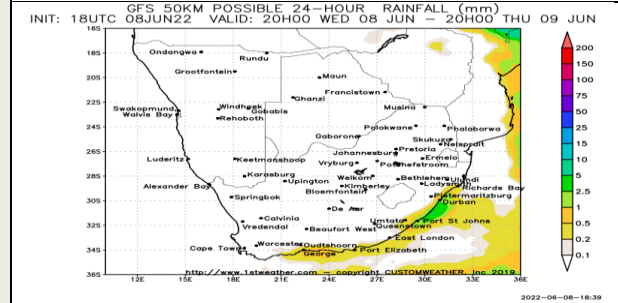
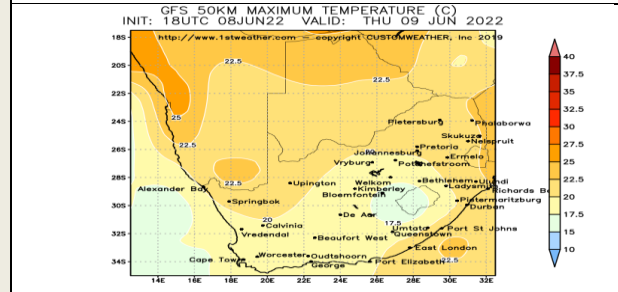
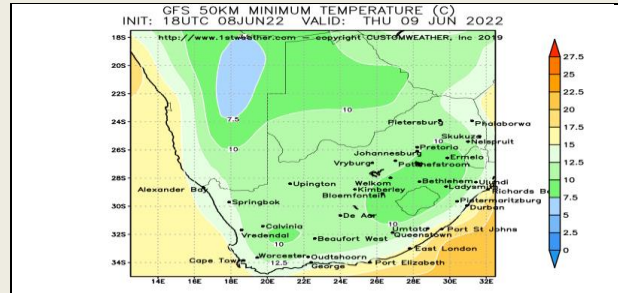
Weather Report

09 June 2022

South Africa - Weather

Harvesting of the summer crops will advance swiftly in much of South Africa during the coming week as dry weather persists. A frontal boundary will bring rain to Western Cape and neighboring areas in Northern Cape late this weekend and early next week that will continue to promote generally favorable winter wheat planting and establishment conditions. Free State, eastern and central Northern Cape, and neighboring areas would benefit from a good shot of rain to maintain ideal winter wheat conditions as well, though crop prospects are still mostly favorable. • Eastern and central South Africa will be mostly dry during the coming week

- o Any rain that does occur will be lost to evaporation
- Western South Africa will be mostly dry through Sunday afternoon before a frontal boundary brings rain to the region late Sunday and next Monday
- o Moisture totals by next Tuesday morning will range from 0.10-0.75" in most locations, though western sections of Western Cape will receive 0.75-3.00" of rain
- Drier than normal conditions will persist for a large section of South Africa June 15 – 21
- o However, periods of light rain will be possible in southern and eastern South Africa



DISCLAIMER: This report has been prepared by GroCapital Financial Services Pty Ltd, a wholly owned subsidiary of AFGRI Operations Limited. It is provided to you for information purposes only. GROCAPITAL AND AFGRI hereby certify that the views expressed in this report were obtained from sources which GROCAPITAL AND AFGRI consider to be reliable. GROCAPITAL AND AFGRI do not make any representations or give any guarantees or warranties, expressed or implied, as to the correctness, accuracy or completeness of the report. Neither GROCAPITAL AND AFGRI, nor any affiliate, nor any of their respective officers, directors, partners or employees, shall assume any liability for any losses arising from errors or omissions in the opinions, forecasts or information, irrespective of whether there has been any negligence by GroCapital and AFGRI, their affiliate, or their respective officers, directors, partners or employees, regardless of whether such damages were foreseen or unforeseen. The information contained in this report is confidential and may be subject to legal privilege. This report is not intended to not should it be taken to create any legal relations or contractual relations.

United States of America - Weather

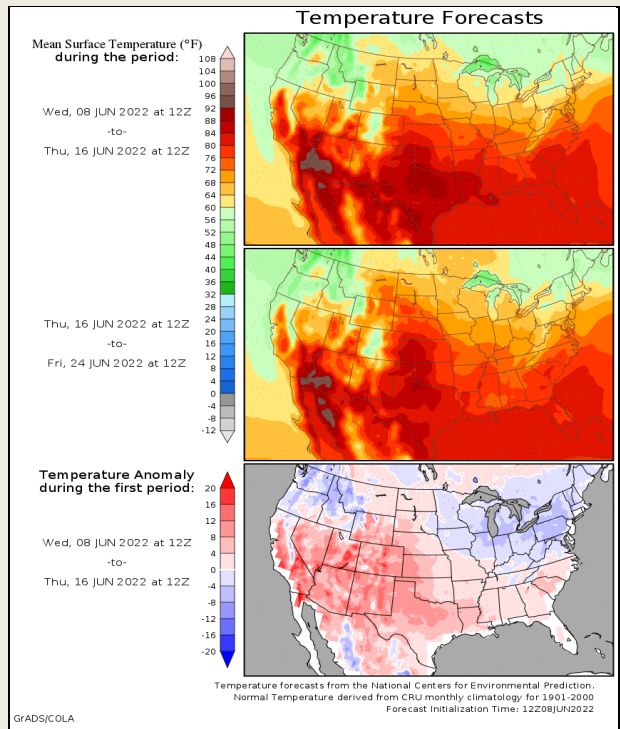
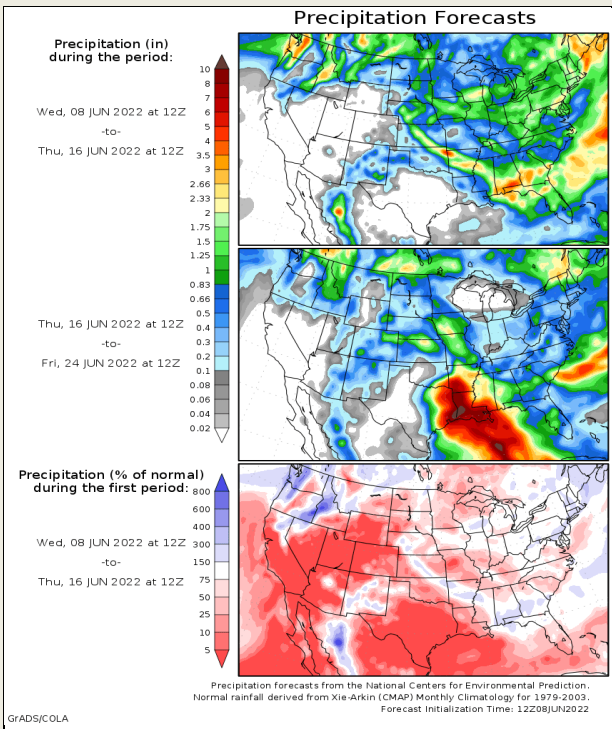
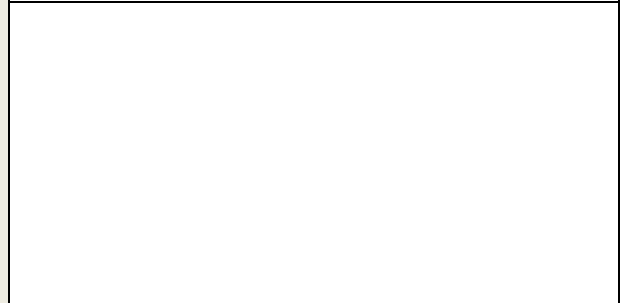
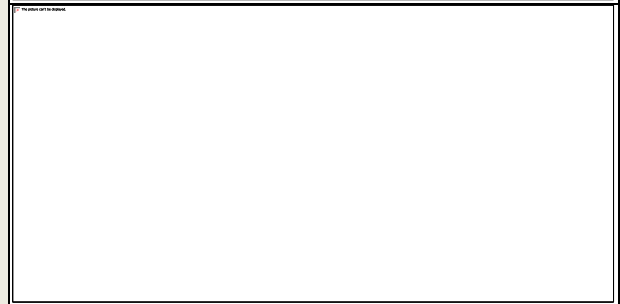
U.S. MIDWEST: Crops will continue to develop in a favorable environment through at least the next ten days to two weeks as regular rounds of showers and thunderstorms keep the soil favorably moist with some of the drier areas from eastern Nebraska to Wisconsin seeing increases in soil moisture by early next week. Rain is not likely to fall frequently enough to prevent late planting from taking place between rounds of precipitation.

☐ The far northwestern Corn Belt will have good opportunities for planting as little to no rain of significance will fall through Friday before showers return this weekend.

U.S. DELTA AND SOUTHEAST: The Delta and the Southeast will see more sunshine than rain during the next two weeks and many areas will dry down overall allowing for good planting progress while raising the need for greater rain later this month.

o All areas will receive at least some rain that will prevent most locations from becoming excessively dry during the next two weeks with greater rain needed soon across the region.

☐ The southern Delta will be driest.



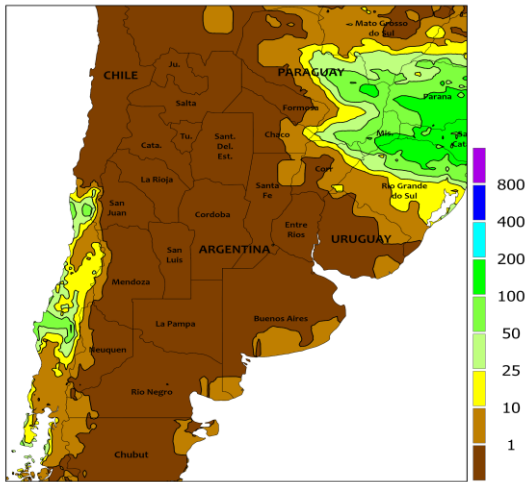
DISCLAIMER: This report has been prepared by GroCapital Financial Services Pty Ltd, a wholly owned subsidiary of AFGRI Operations Limited is provided to you for information purposes only. GROCAPITAL AND AFGRI hereby certify that the views expressed in this report were obtained from sources which GROCAPITAL AND AFGRI consider to be reliable. GROCAPITAL AND AFGRI do not make any representations or give any guarantees or warranties, expressed or implied, as to the correctness, accuracy or completeness of the report. Neither GROCAPITAL AND AFGRI, nor any affiliate, nor any of their respective officers, directors, partners or employees, shall assume any liability for any losses arising from errors or omissions in the opinions, forecasts or information, irrespective of whether there has been any negligence by GroCapital and AFGRI, their affiliate, or their respective officers, directors, partners or employees, regardless of whether such damages were foreseen or unforeseen. The information contained in this report is confidential and may be subject to legal privilege. This report is not intended to not should it be taken to create any legal relations or contractual relations.

South America - Weather

BRAZIL: Western into southern Mato Grosso and southernmost Goias will see scattered showers Wednesday through next Friday with a few more light showers June 11-17 and some Safrinha corn should benefit from the moisture while most of the rain will be too light and come too late to have a significant impact on yield potentials. o Much of central to eastern Mato Grosso into central and northern Goias will miss next week's rain. • Additional rain will fall through Saturday through Tuesday from Paraguay into southern Brazil and fieldwork will be sluggish before drier weather returns Wednesday through June 17.

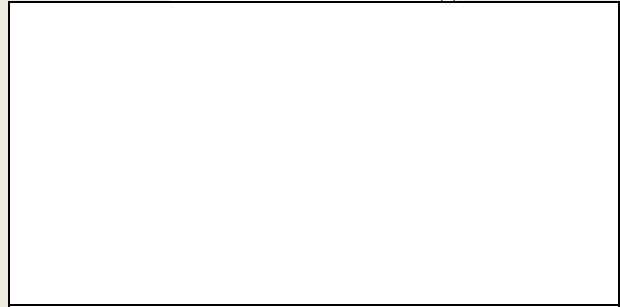
ARGENTINA: Dry weather will be most common through the next two weeks and fieldwork will advance well around light showers that infrequently develop in small parts of the country. o Greater rain is needed in the drier areas of western Argentina to improve conditions for winter crops. o An exception will occur Saturday into Monday when Chaco to Corrientes receives 0.75-2.0" of rain and locally more with lighter rain in nearby areas.

ARGENTINA
Total Precipitation(mm)
May 29 - June 4, 2022

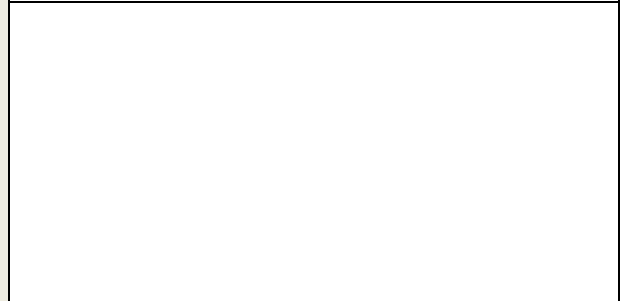


CLIMATE PREDICTION CENTER, NOAA
Computer generated contours
Based on preliminary data

10 20 30 40 50 60 70 80 90 (%)

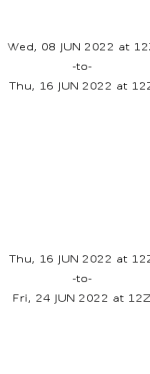


-20° -10° 0° 10° 20° 30° 40° (C)

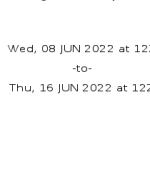


Precipitation Forecasts

Precipitation (mm) during the period:



Precipitation (% of normal) during the first period:



Precipitation forecasts from the National Centers for Environmental Prediction.
Normal rainfall derived from Xie-Arkin (CMAP) Monthly Climatology for 1979-2003.
Forecast Initialization Time: 12Z08JUN2022

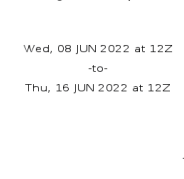
GRADS/COLA

Temperature Forecasts

Mean Surface Temperature (°C) during the period:



Temperature Anomaly during the first period:



Temperature forecasts from the National Centers for Environmental Prediction.
Normal Temperature derived from CRU monthly climatology for 1901-2000
Forecast Initialization Time: 12Z08JUN2022

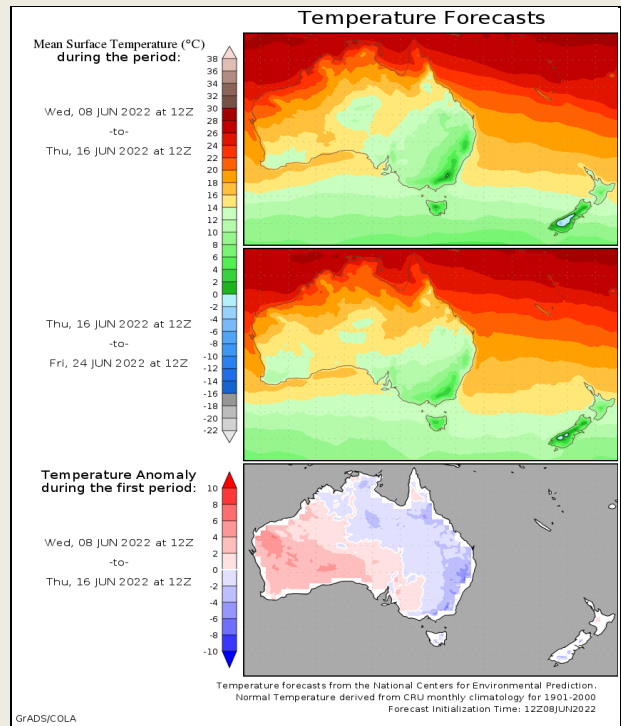
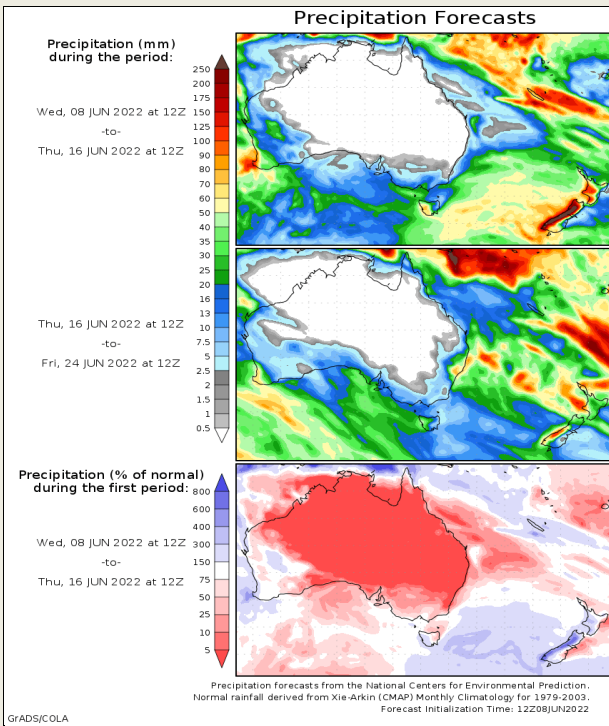
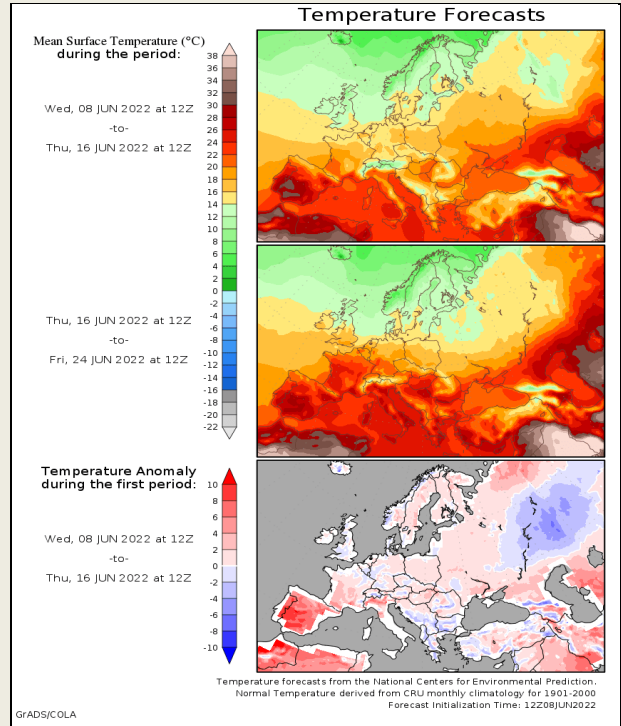
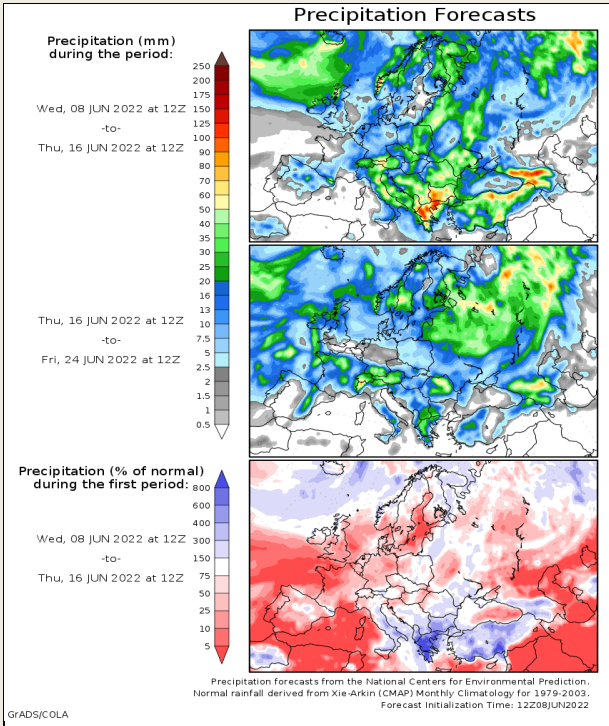
GRADS/COLA

DISCLAIMER: This report has been prepared by GroCapital Financial Services Pty Ltd, a wholly owned subsidiary of AFGRI Operations Limited is provided to you for information purposes only. GROCAPITAL AND AFGRI hereby certify that the views expressed in this report were obtained from sources which GROCAPITAL AND AFGRI consider to be reliable. GROCAPITAL AND AFGRI do not make any representations or give any guarantees or warranties, expressed or implied, as to the correctness, accuracy or completeness of the report. Neither GROCAPITAL AND AFGRI, nor any affiliate, nor any of their respective officers, directors, partners or employees, shall assume any liability for any losses arising from errors or omissions in the opinions, forecasts or information, irrespective of whether there has been any negligence by GroCapital and AFGRI, their affiliate, or their respective officers, directors, partners or employees, regardless of whether such damages were foreseen or unforeseen. The information contained in this report is confidential and may be subject to legal privilege. This report is not intended to not should it be taken to create any legal relations or contractual relations.

Europe, New Zealand and Australia - Weather

EUROPE: Enough rain is still expected in the first week of the outlook for at least some rise in topsoil moisture in most areas except Portugal, Spain, and southeastern France. Some needed rain is likely in Italy after Monday. The need for greater rainfall continues to rise in southeastern France. There is also a need for more rain in Spain and Portugal; though, this part of the region does not typically get much rain this time of year.

AUSTRALIA: Conditions are still expected to be favorable for winter crop production through at least the first week of the outlook. Enough rain will occur in most areas to maintain a favorable amount of soil moisture. Western Australia will be the driest part of the region which will not be an issue this week; however, the need for rain will increase later in June.



DISCLAIMER: This report has been prepared by GroCapital Financial Services Pty Ltd, a wholly owned subsidiary of AFGRI Operations Limited is provided to you for information purposes only. GROCAPITAL AND AFGRI hereby certify that the views expressed in this report were obtained from sources which GROCAPITAL AND AFGRI consider to be reliable. GROCAPITAL AND AFGRI do not make any representations or give any guarantees or warranties, expressed or implied, as to the correctness, accuracy or completeness of the report. Neither GROCAPITAL AND AFGRI, nor any affiliate, nor any of their respective officers, directors, partners or employees, shall assume any liability for any losses arising from errors or omissions in the opinions, forecasts or information, irrespective of whether there has been any negligence by GroCapital and AFGRI, their affiliate, or their respective officers, directors, partners or employees, regardless of whether such damages were foreseen or unforeseen. The information contained in this report is confidential and may be subject to legal privilege. This report is not intended to not should it be taken to create any legal relations or contractual relations.