



Weather Report

21 November 2022

South Africa - Weather

SOUTH AFRICA: South Africa will see a mix of erratic rainfall and sunshine through the end of next week. Net drying is slated for a large section of crop country outside portions of Natal and Mpumalanga. There will still be plenty of moisture to support aggressive establishment and growth despite the drying trend. Harvesting of winter wheat will also advance swiftly around the rain.

South Africa will have a few opportunities for rain through the end of next week

o A disturbance will initially promote erratic rainfall in eastern South Africa today and Saturday

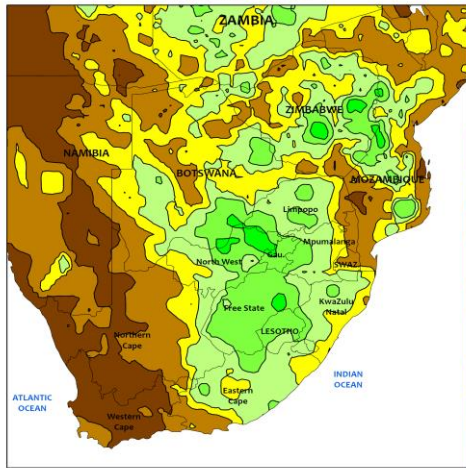
o Another disturbance will promote spotty rainfall for portions of South Africa Monday and Tuesday

o Spotty rainfall will be possible in a few locations later next week as well

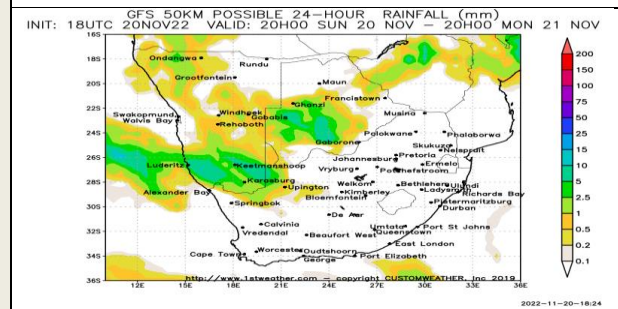
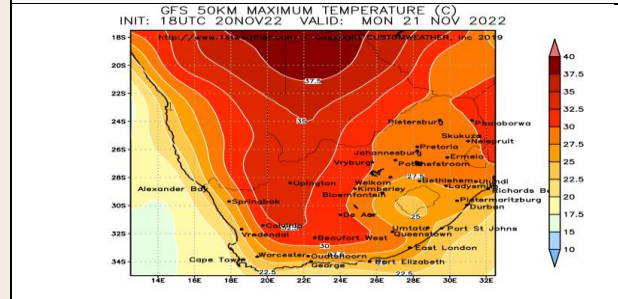
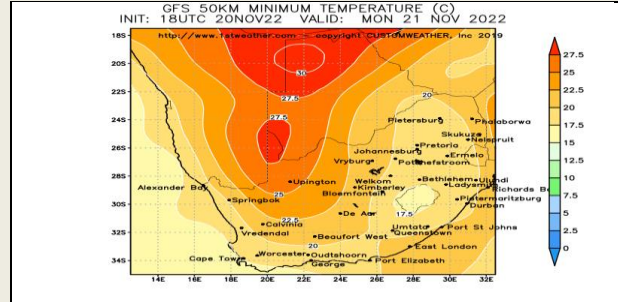
o Portions of Natal and Mpumalanga will receive 0.50-2.00" of rain by next Friday morning

o Other areas will receive 0.10-0.75" of moisture with in Northern Cap, western Cape, and neighboring areas

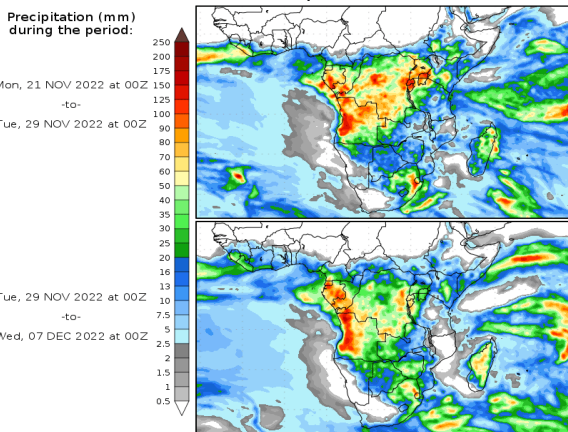
SOUTH AFRICA
Total Precipitation(mm)
November 6 - 12, 2022



CLIMATE PREDICTION CENTER, NOAA
Computer generated contours
Based on preliminary data



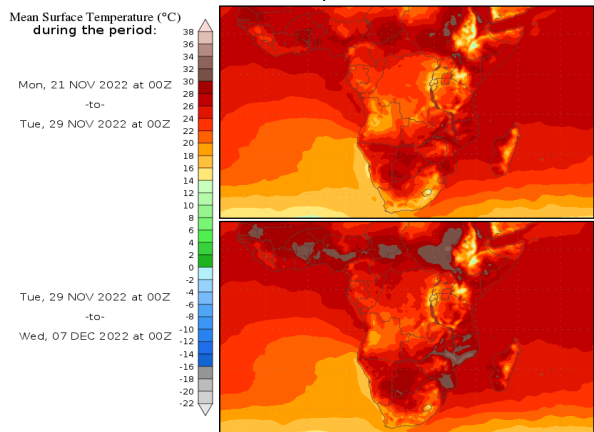
Precipitation Forecasts



Precipitation forecasts from the National Centers for Environmental Prediction.
Normal rainfall derived from Xie-Arkin (CMAP) Monthly Climatology for 1979-2003.
Forecast Initialization Time: 00Z21NOV2022

GRADS/COLA

Temperature Forecasts



Temperature forecasts from the National Centers for Environmental Prediction.
Normal Temperature derived from CRU monthly climatology for 1901-2000
Forecast Initialization Time: 00Z21NOV2022

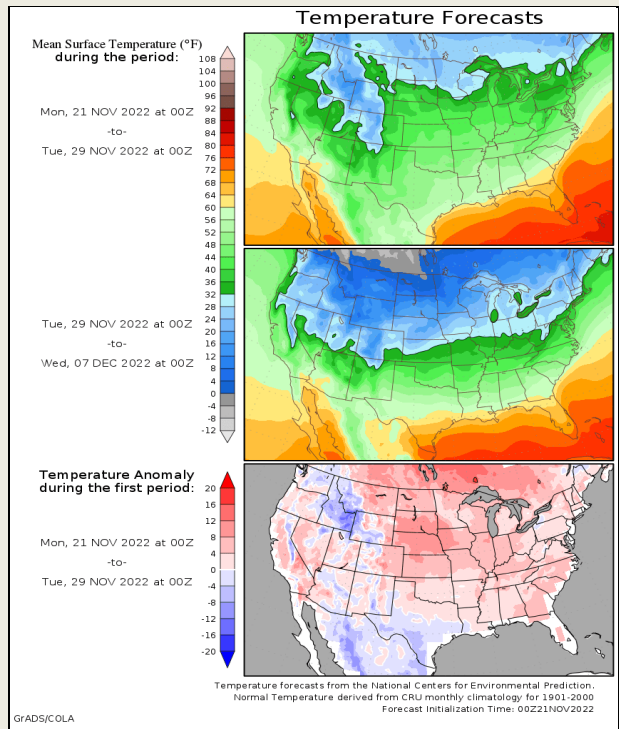
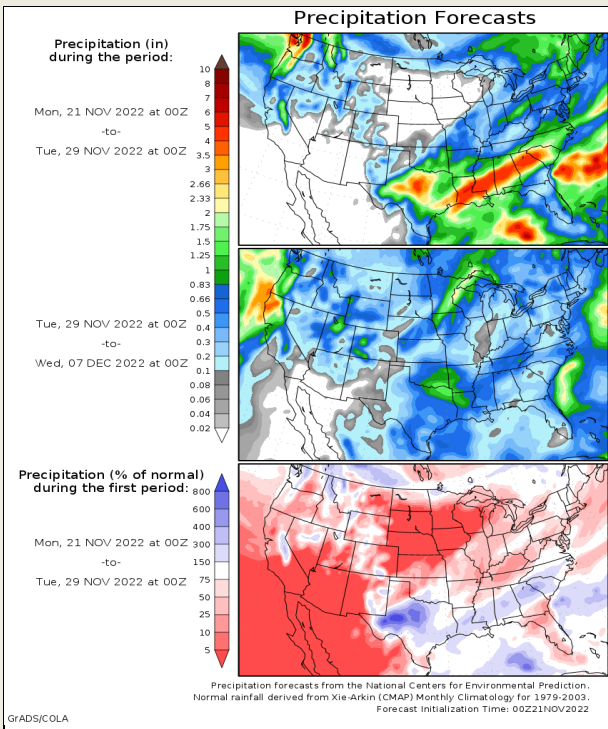
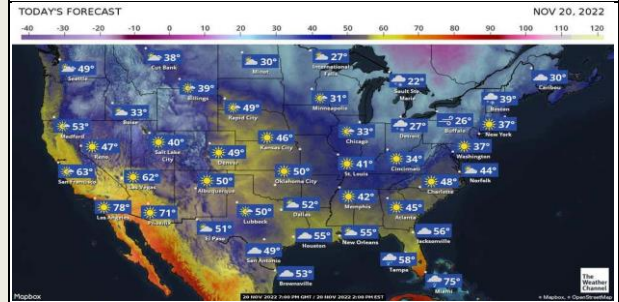
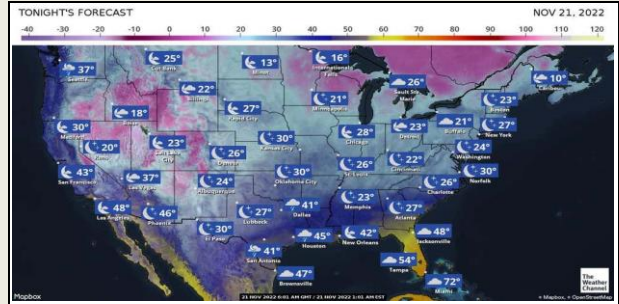
GRADS/COLA

DISCLAIMER: This report has been prepared by GroCapital Financial Services Pty Ltd, a wholly owned subsidiary of AFGRI Operations Limited is provided to you for information purposes only. GROCAPITAL AND AFGRI hereby certify that the views expressed in this report were obtained from sources which GROCAPITAL AND AFGRI consider to be reliable. GROCAPITAL AND AFGRI do not make any representations or give any guarantees or warranties, expressed or implied, as to the correctness, accuracy or completeness of the report. Neither GROCAPITAL AND AFGRI, nor any affiliate, nor any of their respective officers, directors, partners or employees, shall assume any liability for any losses arising from errors or omissions in the opinions, forecasts or information, irrespective of whether there has been any negligence by GroCapital and AFGRI, their affiliate, or their respective officers, directors, partners or employees, regardless of whether such damages were foreseen or unforeseen. The information contained in this report is confidential and may be subject to legal privilege. This report is not intended to not should it be taken to create any legal relations or contractual relations.

United States of America - Weather

U.S. MIDWEST: Light snow showers and little significant accumulation scattered across the northern Midwest Thursday with exceptions in western and parts of central Michigan and portions of north-central Indiana where significant snow fell. Late harvesting should advance well overall during the next two weeks as precipitation will be infrequent and mostly light and some northern areas should remain cold enough for at least a few more days for fieldwork to advance on frozen ground.

U.S. DELTA AND SOUTHEAST: The Delta and the Southeast were mostly dry Thursday and harvesting should have advanced well in many areas. Most days during the next two weeks will be dry outside of rain in the Delta and the Southeast Wednesday into next Friday with fieldwork likely to advance well around the precipitation.

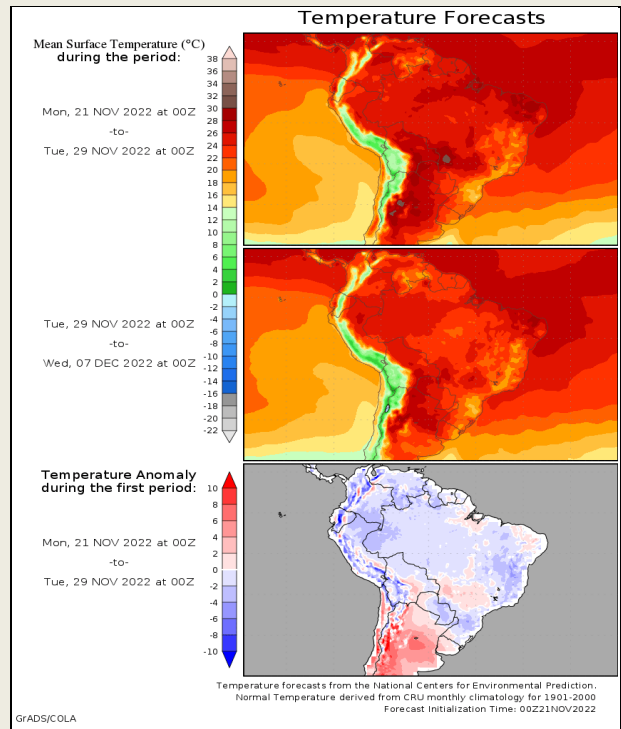
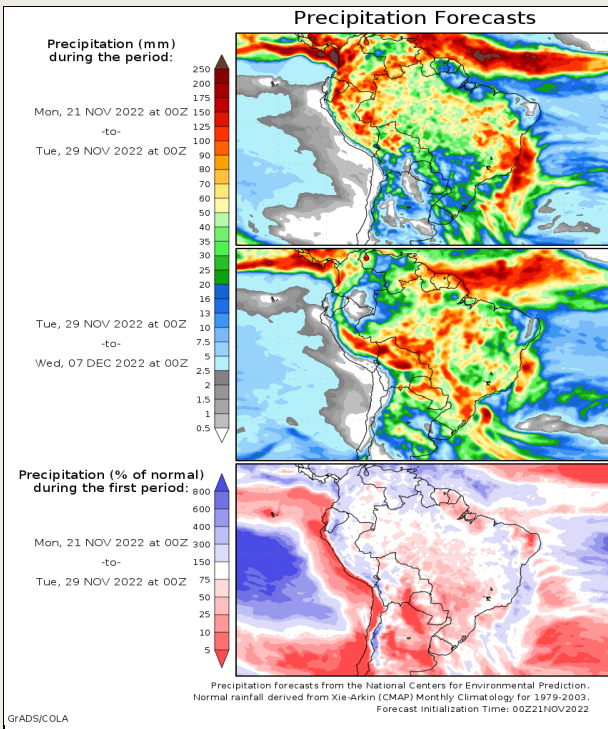
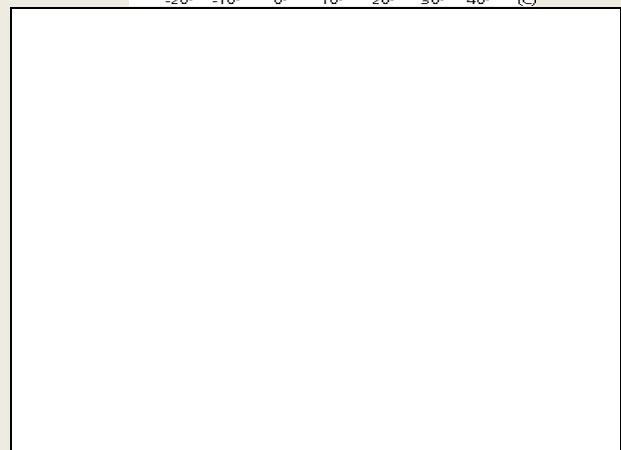
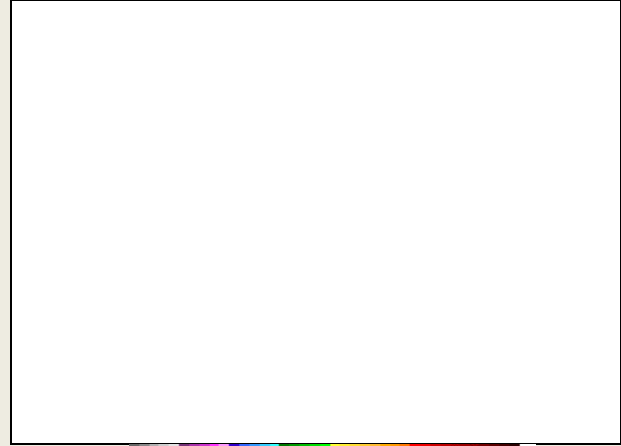


DISCLAIMER: This report has been prepared by GroCapital Financial Services Pty Ltd, a wholly owned subsidiary of AFGRI Operations Limited is provided to you for information purposes only. GROCAPITAL AND AFGRI hereby certify that the views expressed in this report were obtained from sources which GROCAPITAL AND AFGRI consider to be reliable. GROCAPITAL AND AFGRI do not make any representations or give any guarantees or warranties, expressed or implied, as to the correctness, accuracy or completeness of the report. Neither GROCAPITAL AND AFGRI, nor any affiliate, nor any of their respective officers, directors, partners or employees, shall assume any liability for any losses arising from errors or omissions in the opinions, forecasts or information, irrespective of whether there has been any negligence by GroCapital and AFGRI, their affiliate, or their respective officers, directors, partners or employees, regardless of whether such damages were foreseen or unforeseen. The information contained in this report is confidential and may be subject to legal privilege. This report is not intended to not should it be taken to create any legal relations or contractual relations.

South America - Weather

BRAZIL: Paraguay and much of Brazil were dry Thursday with rain in a few northeastern Brazil locations. Rain during the next two weeks will be greatest in northeastern Brazil where additional increases in soil moisture will result and some flooding may occur while west-central into central and southern Brazil and Paraguay are dry most often and see good planting progress. Timely and nearly widespread rain Sunday into Wednesday will be important in keeping the soil moist enough to favorably support crop development from west-central into central and southern Brazil and Paraguay.

ARGENTINA: Much of Argentina was dry Thursday and fieldwork should have advanced well while rain fell on a few southern locations. Dry weather and good planting progress will be most common through the next two weeks with one round of rain Saturday into Monday not likely great to keep some crops from becoming stressed later this month if follow-up rain does not occur soon. Showers may increase Nov. 29-Dec. 1, but confidence for this event is low and a close watch on this period will be made.

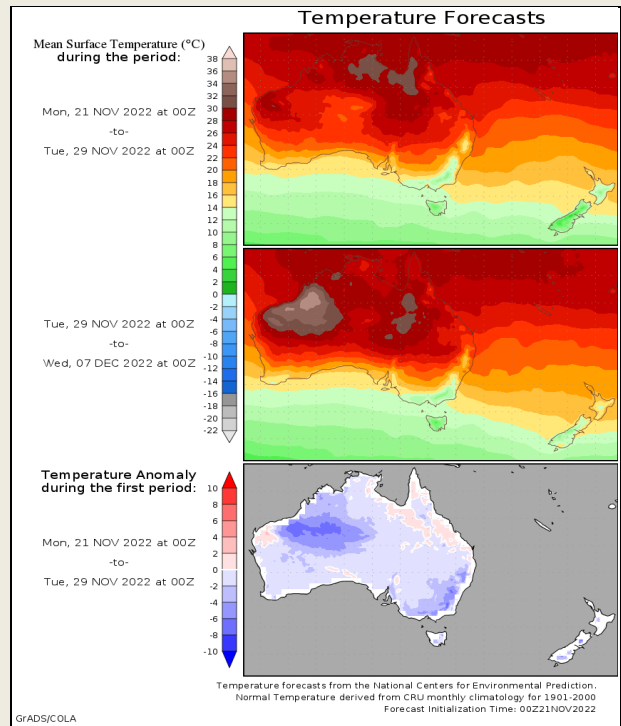
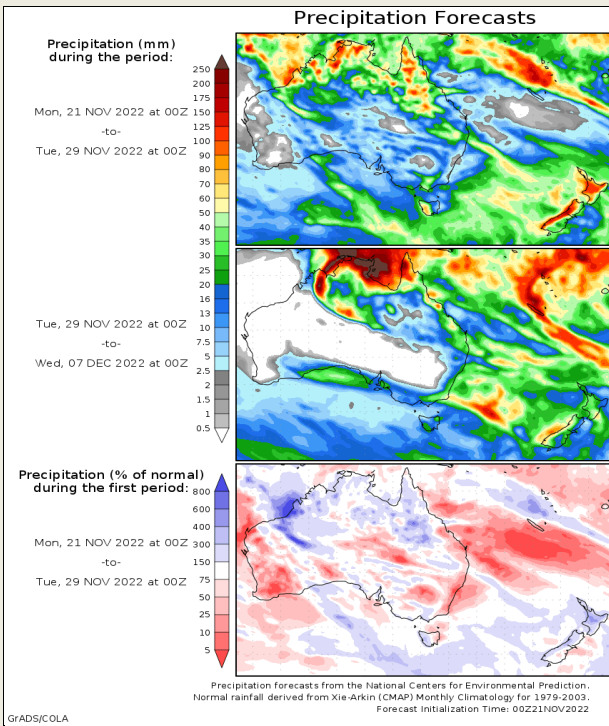
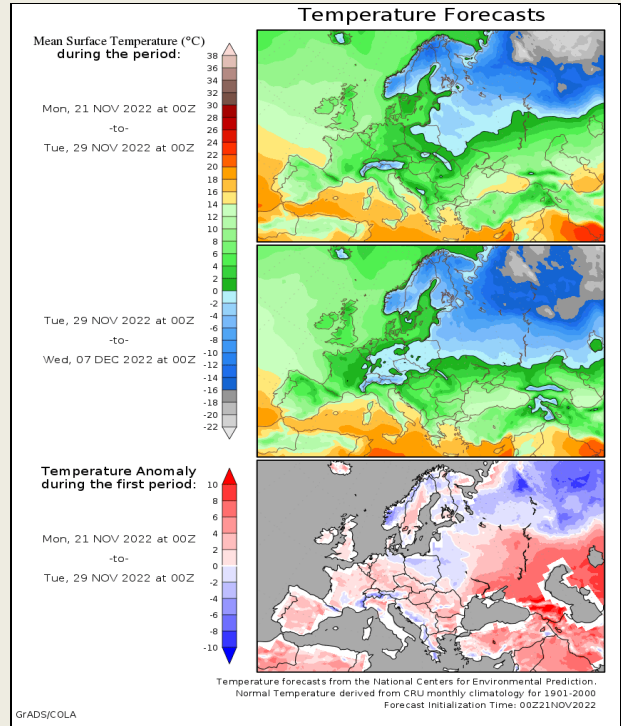
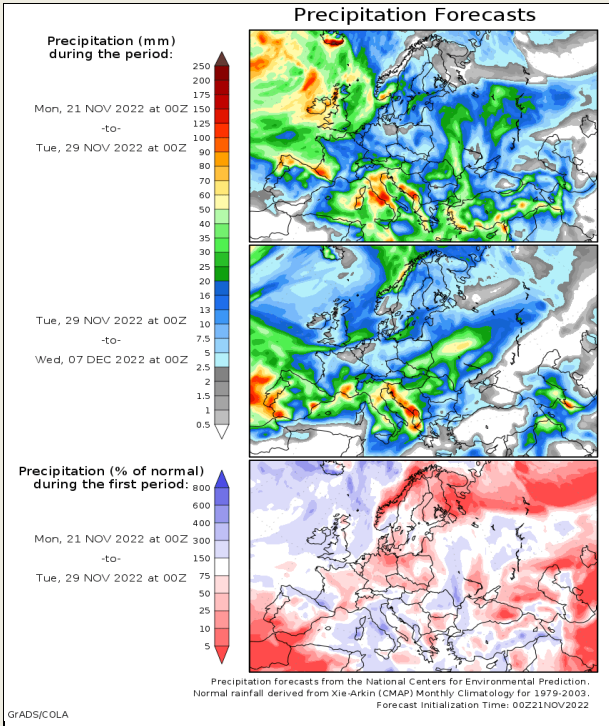


DISCLAIMER: This report has been prepared by GroCapital Financial Services Pty Ltd, a wholly owned subsidiary of AFGRI Operations Limited is provided to you for information purposes only. GROCAPITAL AND AFGRI hereby certify that the views expressed in this report were obtained from sources which GROCAPITAL AND AFGRI consider to be reliable. GROCAPITAL AND AFGRI do not make any representations or give any guarantees or warranties, expressed or implied, as to the correctness, accuracy or completeness of the report. Neither GROCAPITAL AND AFGRI, nor any affiliate, nor any of their respective officers, directors, partners or employees, shall assume any liability for any losses arising from errors or omissions in the opinions, forecasts or information, irrespective of whether there has been any negligence by GroCapital and AFGRI, their affiliate, or their respective officers, directors, partners or employees, regardless of whether such damages were foreseen or unforeseen. The information contained in this report is confidential and may be subject to legal privilege. This report is not intended to not should it be taken to create any legal relations or contractual relations.

Europe, New Zealand and Australia - Weather

EUROPE: Significant precipitation is expected in southern production areas, particularly Italy the Balkan Countries, in the first week of the outlook. This will be good for notably increasing topsoil moisture, but could lead to some flooding. Rain fell lightly from the United Kingdom, Netherlands and Belgium through France and part of western and southern Germany to Italy and the Balkan Countries. Moisture totals were not more than 0.75 inch in the U.K. and 0.72 inch in western France while most of the precipitation was not more than 0.60 inch. Many areas reported 0.30 inch or less.

AUSTRALIA: Net drying through at least the next seven days will continue to be great for areas that have been struggling with too much rain in the last several weeks; however, near to below average temperatures will limit evaporation rates and warming is needed for stimulation of faster drying rates and faster summer crop emergence and establishment.



DISCLAIMER: This report has been prepared by GroCapital Financial Services Pty Ltd, a wholly owned subsidiary of AFGRI Operations Limited is provided to you for information purposes only. GROCAPITAL AND AFGRI hereby certify that the views expressed in this report were obtained from sources which GROCAPITAL AND AFGRI consider to be reliable. GROCAPITAL AND AFGRI do not make any representations or give any guarantees or warranties, expressed or implied, as to the correctness, accuracy or completeness of the report. Neither GROCAPITAL AND AFGRI, nor any affiliate, nor any of their respective officers, directors, partners or employees, shall assume any liability for any losses arising from errors or omissions in the opinions, forecasts or information, irrespective of whether there has been any negligence by GroCapital and AFGRI, their affiliate, or their respective officers, directors, partners or employees, regardless of whether such damages were foreseen or unforeseen. The information contained in this report is confidential and may be subject to legal privilege. This report is not intended to not should it be taken to create any legal relations or contractual relations.