



# **Technical Report**

## **19 March 2024**



# Technical Analysis

## CBOT / SAFEX Spreads



REFINITIV



REFINITIV



REFINITIV

## Technical Analysis

### Chicago Board of Trade - Corn

Weekly CBOT Corn Spot

2014/03/28 - 2024/10/04 (CHG)



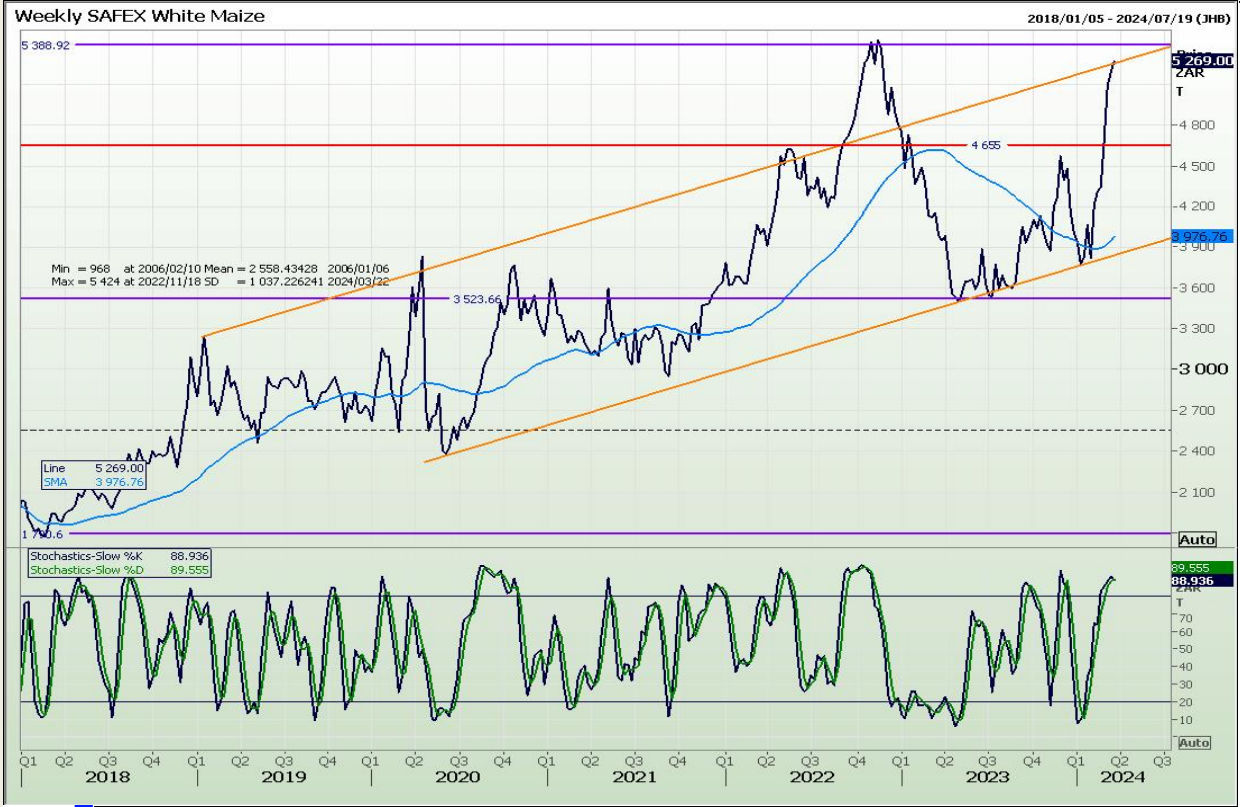
Daily Corn Spot

2022/11/08 - 2024/04/15 (CHG)



# Technical Analysis

## South African Futures Exchange - Maize

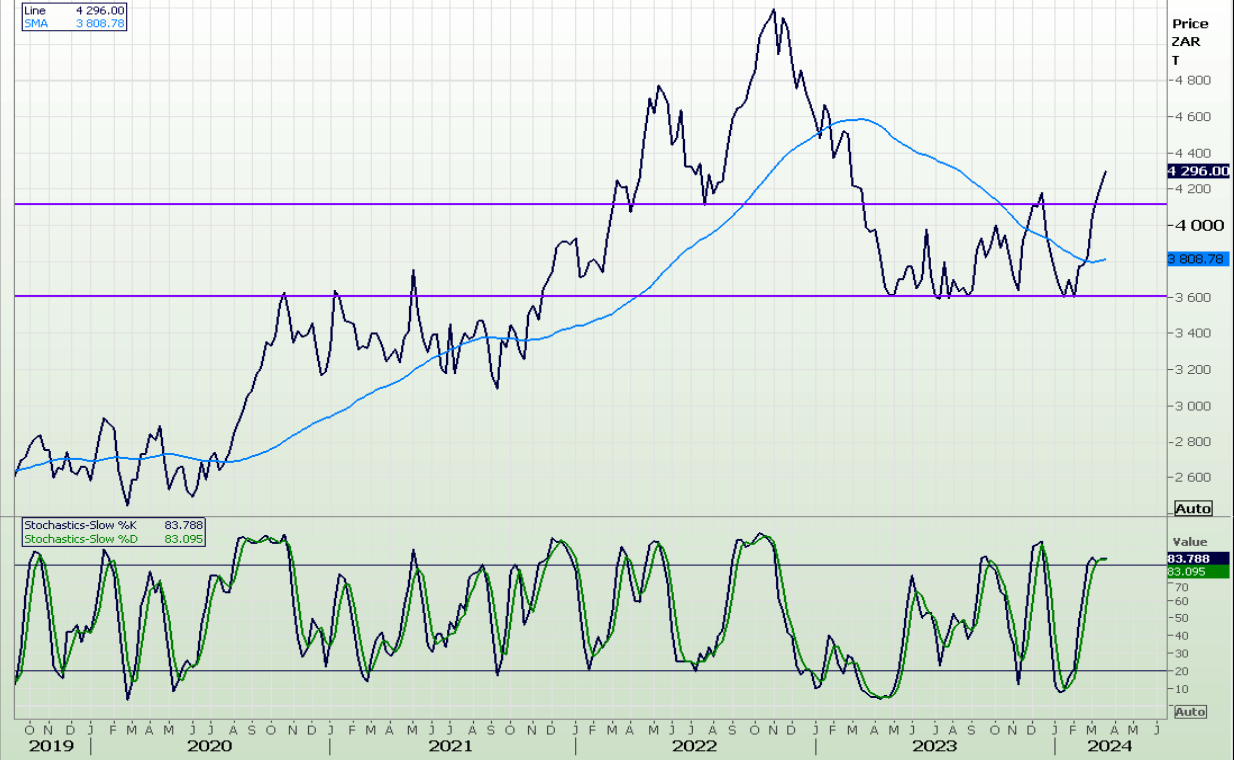


# Technical Analysis

## South African Futures Exchange - Maize

Weekly SAFEX Yellow Maize

2019/09/13 - 2024/06/21 (JHB)



REFINITIV

Daily Yellow Maize Spot

2023/04/06 - 2024/04/09 (JHB)



REFINITIV



# Technical Analysis

## Chicago Board of Trade and Kansas Board of Trade - Wheat





## Technical Analysis

### South African Futures Exchange - Wheat



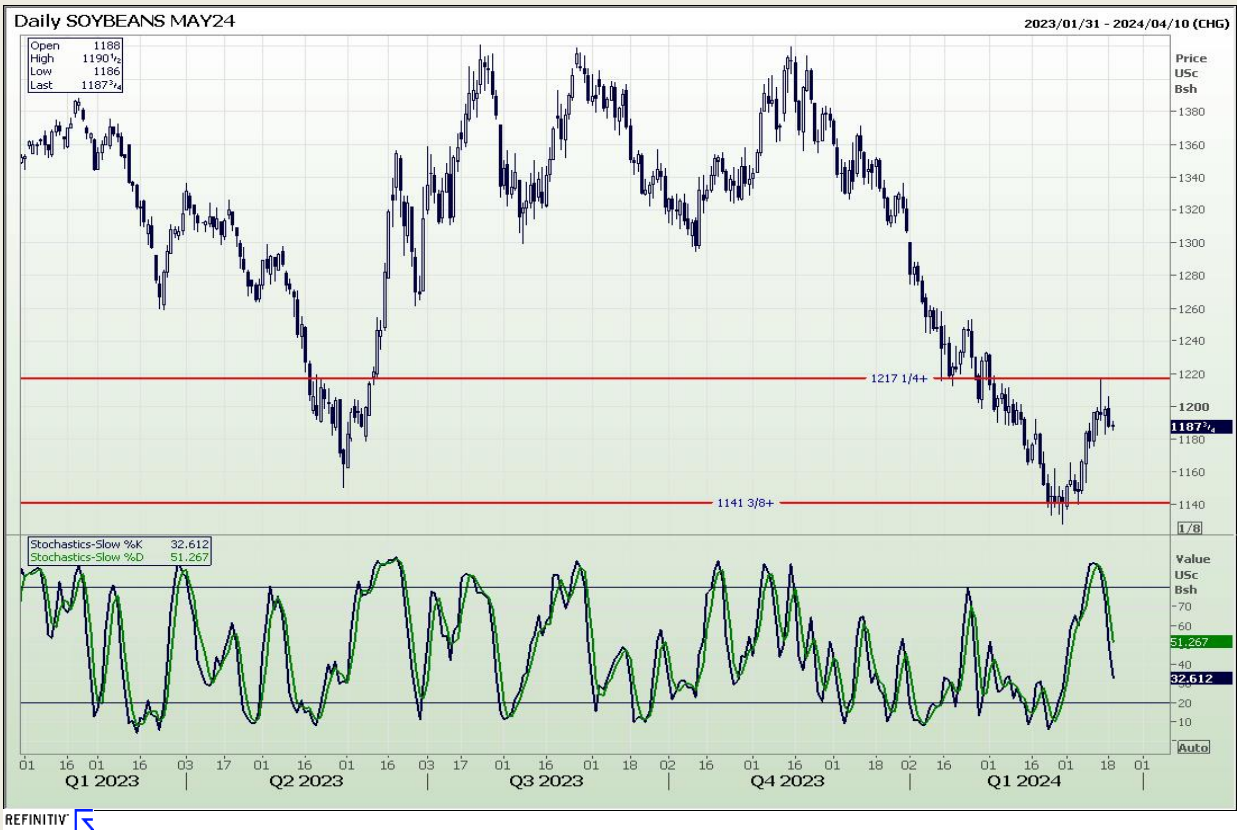
# Technical Analysis

## Chicago Board of Trade and Kansas Board of Trade - Wheat



## Technical Analysis

### Chicago Board of Trade - Soybeans



## Technical Analysis

### South African Futures Exchange - Soybeans

Weekly SAFEX Soya Beans - Spot

2018/10/05 - 2024/07/05 (JHB)



REFINITIV

Daily SOYABEANS MAY4

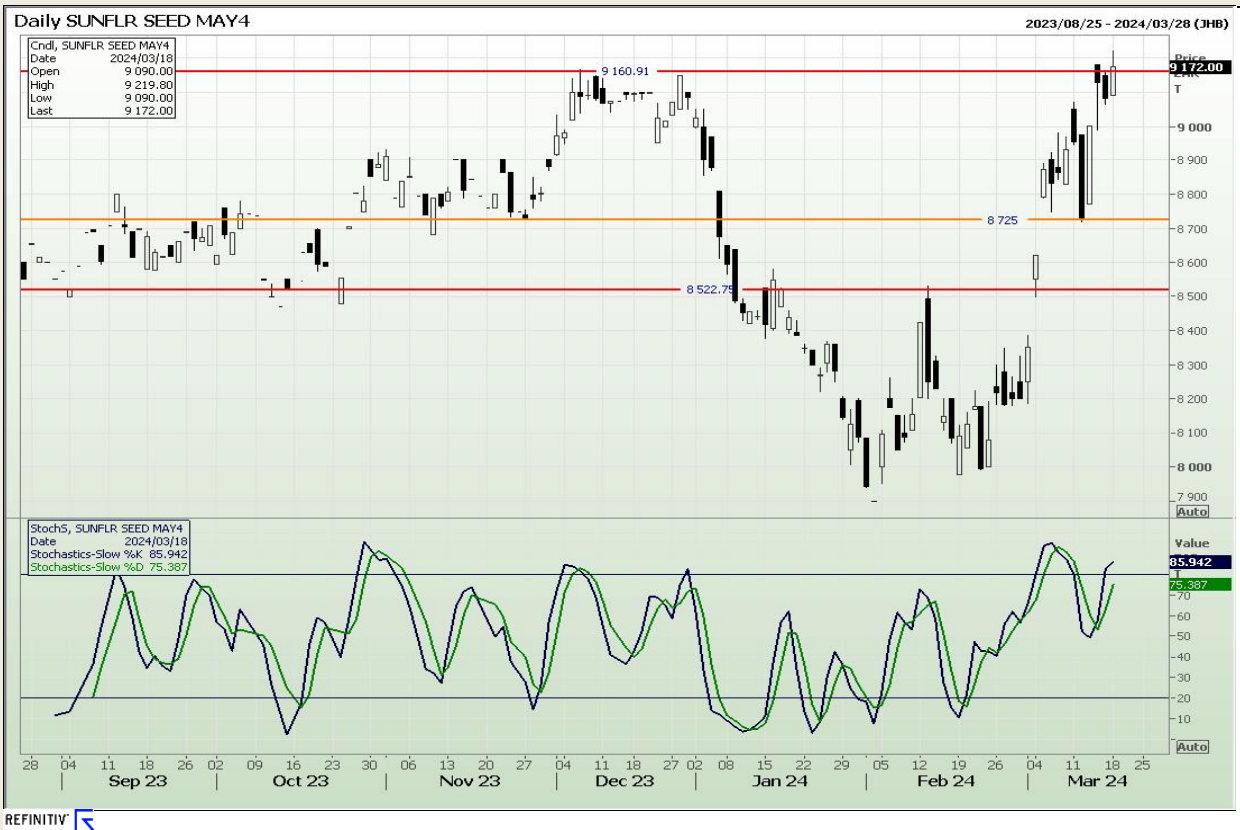
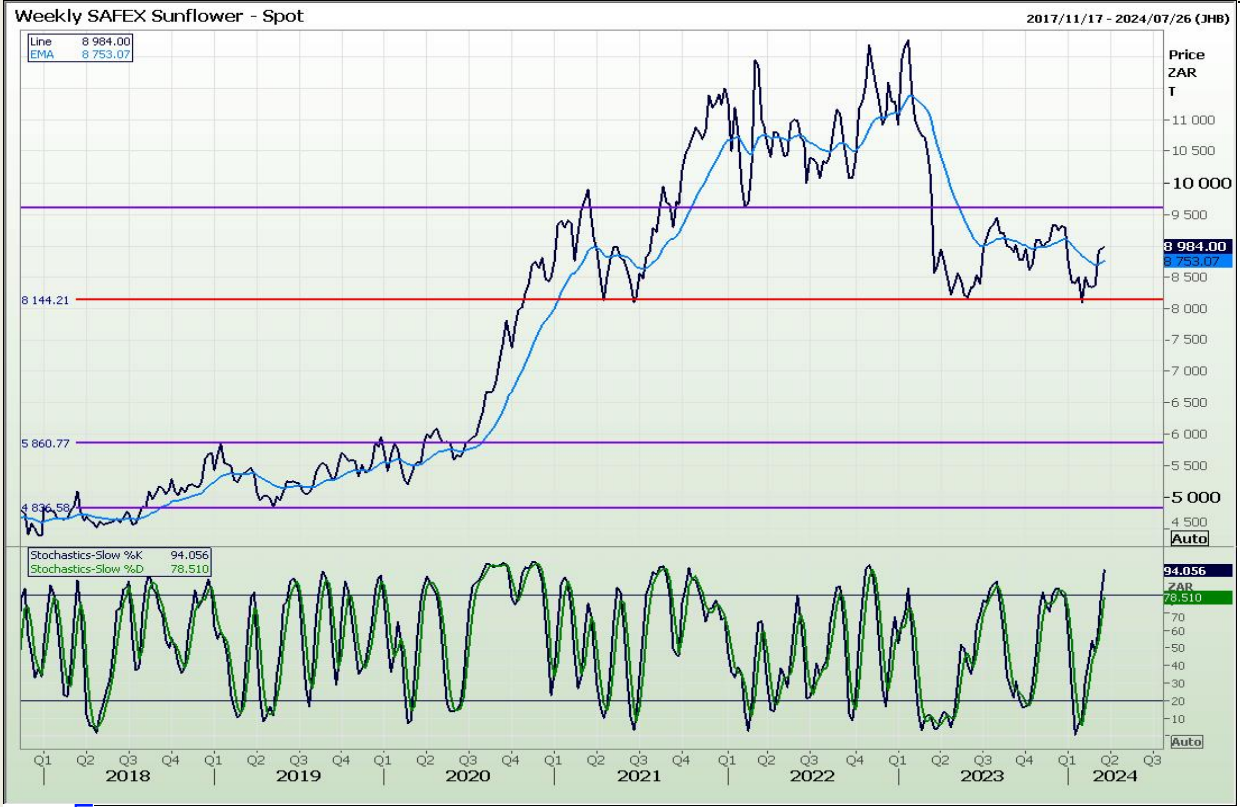
2023/07/28 - 2024/04/03 (JHB)



REFINITIV

# Technical Analysis

## South African Futures Exchange - Sunflower



DISCLAIMER: This report has been prepared by AFGRI Broking, an authorized service provider and member of the JSE. This report is provided to you for information purposes only. AFGRI Broking hereby certify that the views expressed in this report were obtained from sources which AFGRI Broking consider to be reliable. AFGRI Broking do not make any representations or give any guarantees or warranties, expressed or implied, as to the correctness, accuracy or completeness of the report. Neither AFGRI Broking nor any affiliate, nor any of their respective officers, directors, partners or employees, shall assume any liability for any losses arising from errors or omissions in the opinions, forecasts