



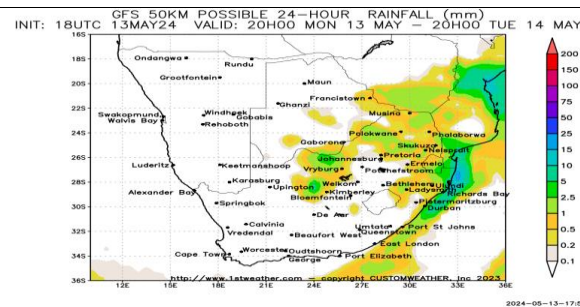
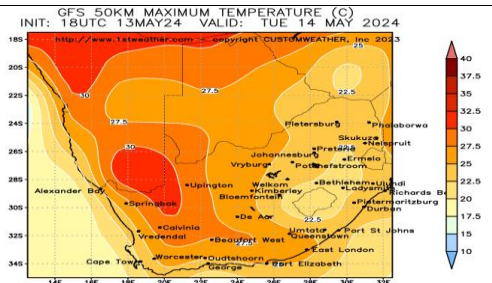
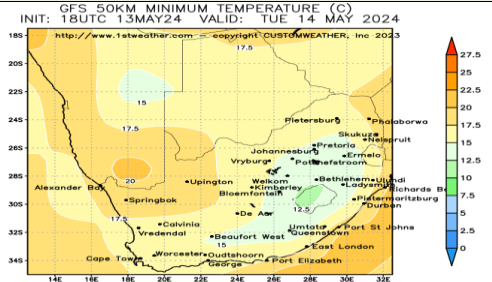
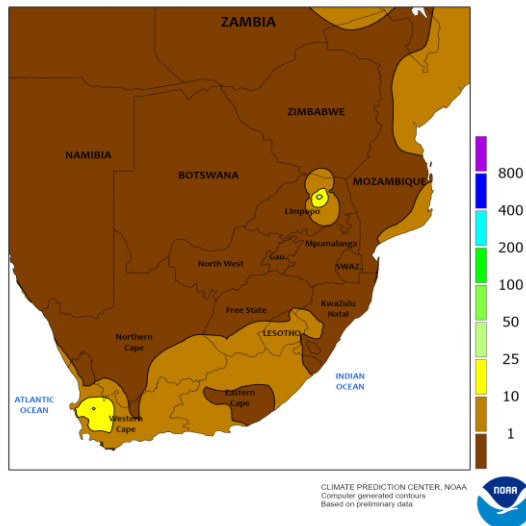
Weather Report

14 May 2024

South Africa - Weather

SOUTH AFRICA : South Africa will generally trend drier than normal this week. The lack of rain will be beneficial for aggressive harvesting and fieldwork. Planting of the winter wheat will also advance with few disruptions. The need for timely rain will increase later this month into June to support ideal wheat establishment and growth, most notably in the rain-fed areas. South Africa will be drier than normal this week. Light rain will still be scattered across the eastern half of the country today and Tuesday. A few locations along the Natal coastline will receive light rain Friday and this weekend as well. Coastal Natal will receive 0.40-2.00" of rain by next Monday morning. Other locations will either be dry or receive negligible rain. Drier than normal weather is slated for most locations May 21 - 27. Periods of light rain will still be possible, most notably in western, southern, and eastern South Africa.

SOUTH AFRICA
Total Precipitation(mm)
April 28 - May 4, 2024 - Station-Interpolated



Precipitation Forecasts

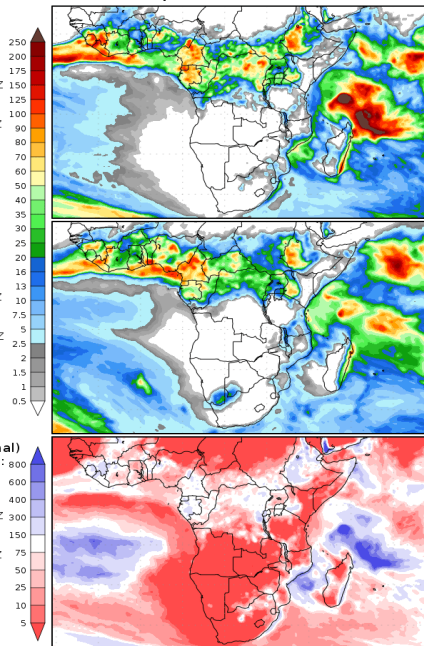
Precipitation (mm)
during the period:

Mon, 13 MAY 2024 at 12Z
-to-
Tue, 21 MAY 2024 at 12Z

Tue, 21 MAY 2024 at 12Z
-to-
Wed, 29 MAY 2024 at 12Z

Precipitation (% of normal)
during the first period:

Mon, 13 MAY 2024 at 12Z
-to-
Tue, 21 MAY 2024 at 12Z



Precipitation forecasts from the National Centers for Environmental Prediction.
Normal rainfall derived from Xie-Arkin (CMAP) Monthly Climatology for 1979-2003.
Forecast Initialization Time: 12Z13MAY2024

GRADS/COLA

Temperature Forecasts

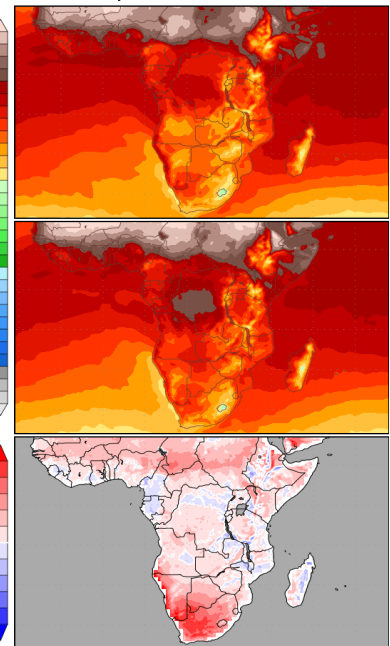
Mean Surface Temperature (°C)
during the period:

Mon, 13 MAY 2024 at 12Z
-to-
Tue, 21 MAY 2024 at 12Z

Tue, 21 MAY 2024 at 12Z
-to-
Wed, 29 MAY 2024 at 12Z

Temperature Anomaly
during the first period:

Mon, 13 MAY 2024 at 12Z
-to-
Tue, 21 MAY 2024 at 12Z



Temperature forecasts from the National Centers for Environmental Prediction.
Normal Temperature derived from CRU monthly climatology for 1901-2000.
Forecast Initialization Time: 12Z13MAY2024

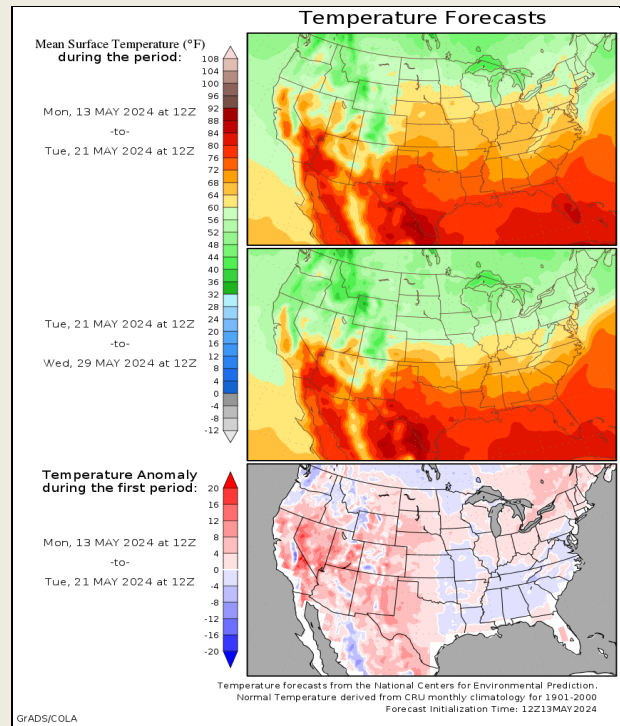
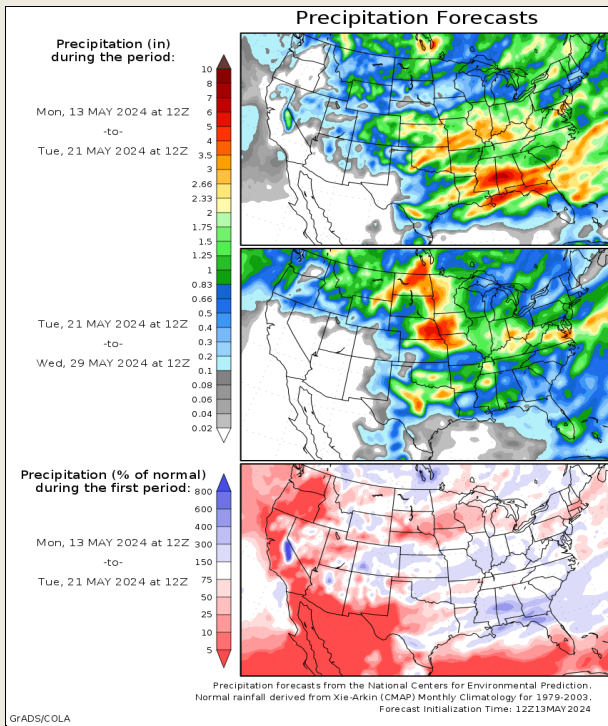
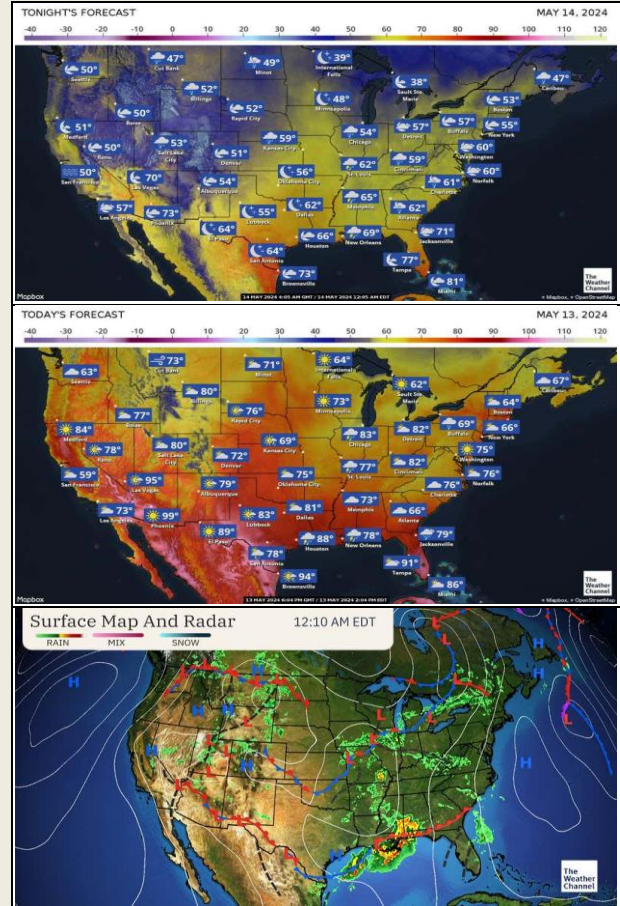
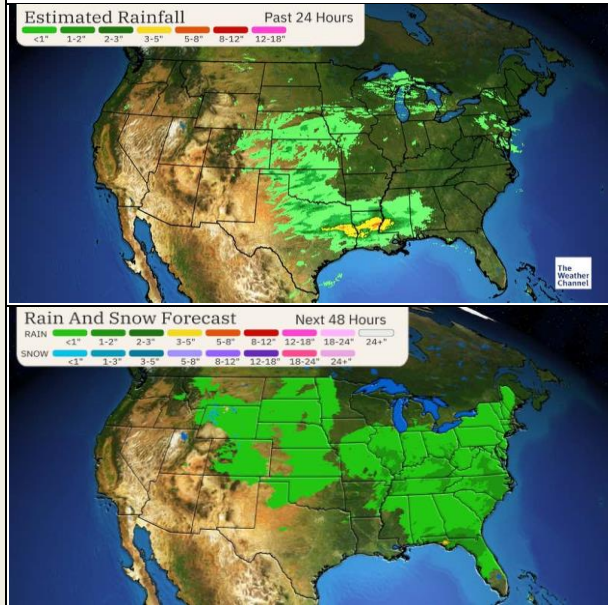
GRADS/COLA

DISCLAIMER: This report has been prepared by AFGRI Broking, an authorized service provider and member of the JSE. This report is provided to you for information purposes only. AFGRI Broking hereby certifies that the views expressed in this report were obtained from sources which AFGRI Broking consider to be reliable. AFGRI Broking does not make any representations or give any guarantees or warranties, expressed or implied, as to the correctness, accuracy or completeness of the report. Neither AFGRI Broking, nor any of its respective officers, directors, partners or employees, shall assume any liability for any losses arising from errors or omissions in the opinions, forecasts or information, irrespective of whether there has been any negligence by AFGRI Broking or its respective officers, directors, partners or employees, regardless of whether such damages were foreseen or unforeseen. The information contained in this report is confidential and may be subject to legal privilege. This report is not intended to be taken to create any legal relations or contractual relationships.

United States of America - Weather

U.S. MIDWEST : The Midwest will see regular rounds of showers and thunderstorms through the next ten days to two weeks and planting will be slowed throughout the region. Some of the best conditions for planting will occur through Tuesday in the northwestern Corn Belt where little rain has fallen in recent days and mostly dry weather will occur into Tuesday. There will be breaks between rounds of rain and some fieldwork will advance, but fieldwork should not become aggressive in large parts of the Midwest until a longer stretch of dry weather occurs.

U.S. DELTA : The Delta and the Southeast will see regular rounds of rain through the next ten days two weeks slowing the planting pace across the region with some heavy rain and flooding possible today into Tuesday from southern Mississippi to southern Georgia and northern Florida. Breaks between rounds of rain will allow for planting to advance in the drier areas, but aggressive fieldwork on a widespread basis is not likely until a longer stretch of dry weather occurs.



DISCLAIMER: This report has been prepared by AFGRI Broking, an authorized service provider and member of the JSE. This report is provided to you for information purposes only. AFGRI Broking hereby certify that the views expressed in this report were obtained from sources which AFGRI Broking consider to be reliable. AFGRI Broking do not make any representations or give any guarantees or warranties, expressed or implied, as to the correctness, accuracy or completeness of the report. Neither AFGRI Broking, nor any affiliate, nor any of their respective officers, directors, partners or employees, shall assume any liability for any losses arising from errors or omissions in the opinions, forecasts or information, irrespective of whether there has been any negligence by AFGRI Broking or its respective officers, directors, partners or employees, regardless of whether such damages were foreseen or unforeseen. The information contained in this report is confidential and may be subject to legal privilege. This report is not intended to not should it be taken to create any legal relations or contractual relations.

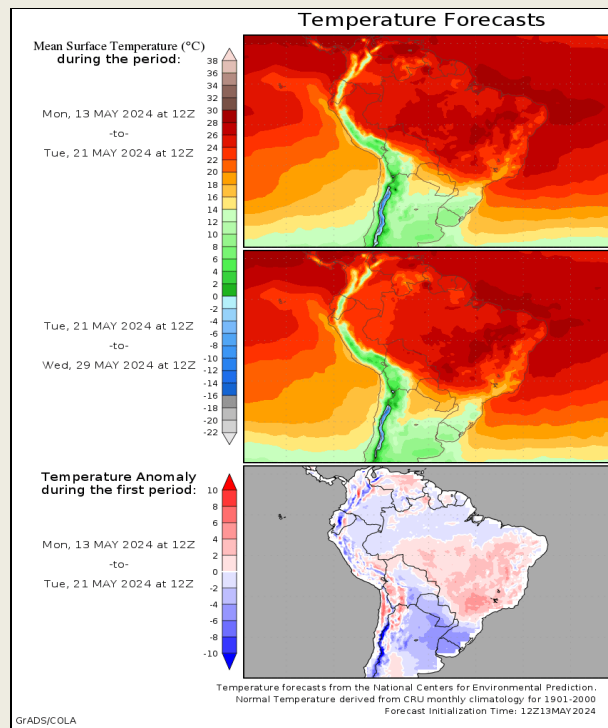
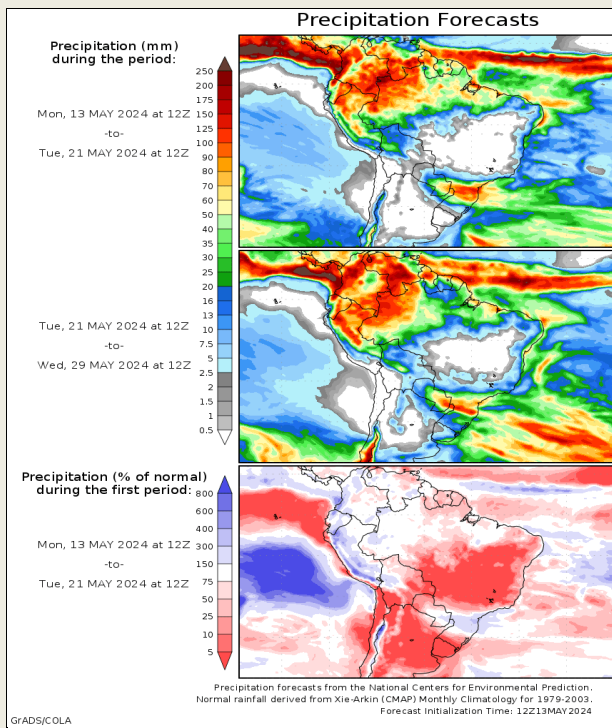
South America - Weather

BRAZIL: Today's forecast is wetter overall for areas in and near Rio Grande do Sul than what was advertised late last week and regular rain through the next ten days should prolong or worsen flooding while causing additional quality declines and some production cuts to rice and soybeans. o Showers should become lighter May 25-27, but the region is in need of an extended stretch of dry weather and the showers expected will keep conditions for fieldwork poor and will likely cause further production cuts to the rice and soybean crops.

ARGENTINA: Harvesting of summer crops should advance well in much of the country during the next two weeks as dry weather will be most common with some showers on occasion that will favor northeastern Argentina. o Some quality declines to rice, cotton, and soybeans may result from rain in northeastern Argentina, but rain is not likely to be frequent enough for widespread declines to occur.

-2.0° -1.0° 0° 1.0° 2.0° 3.0° 4.0° (C)

10 20 30 40 50 60 70 80 90 (%)

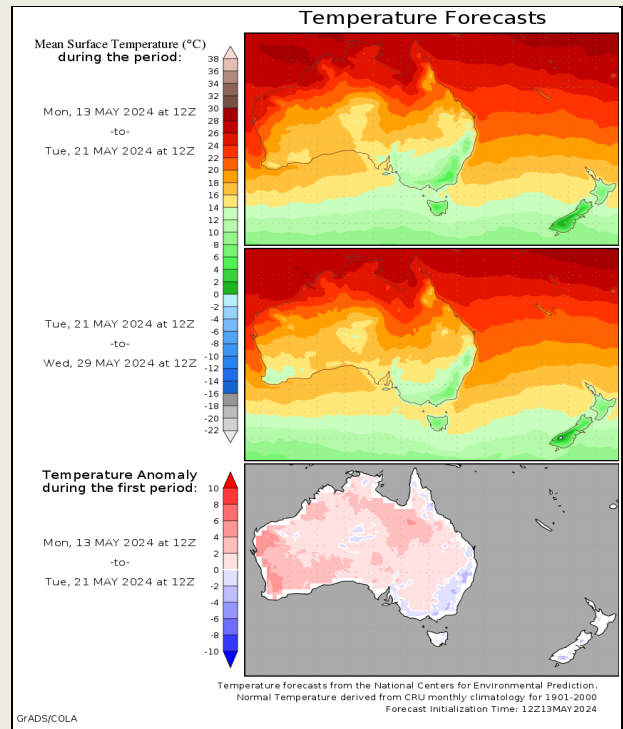
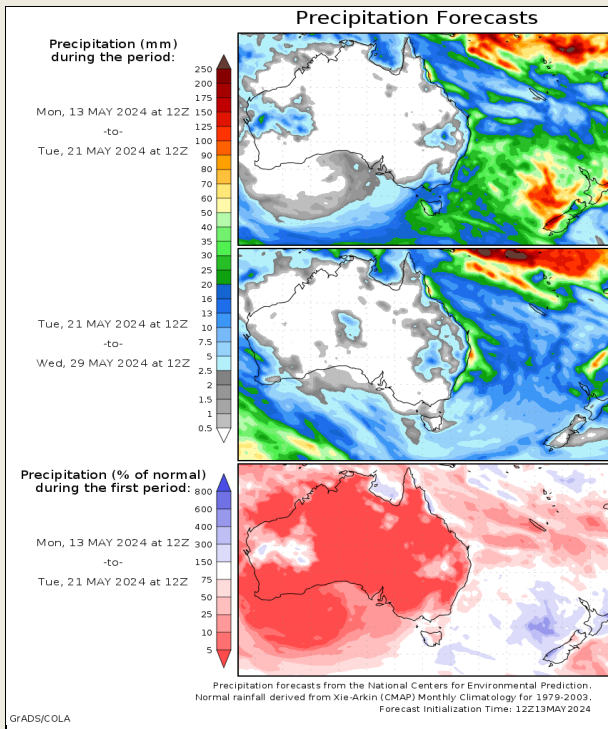
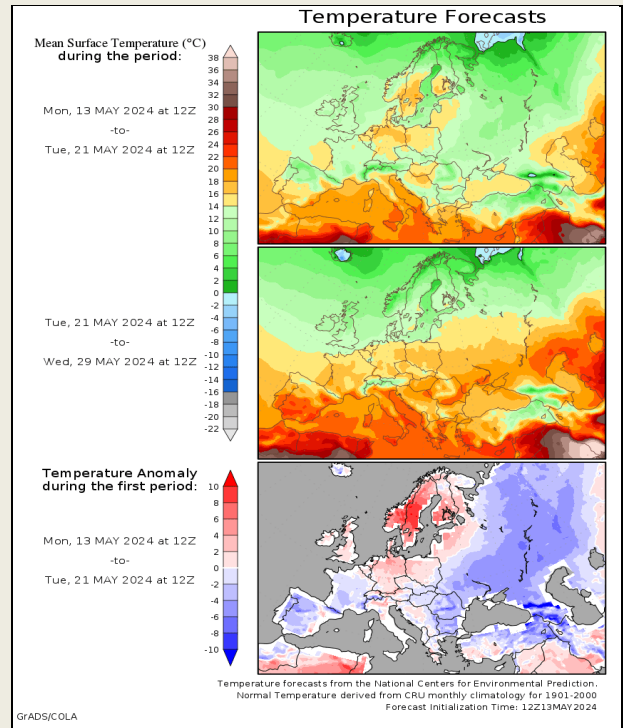
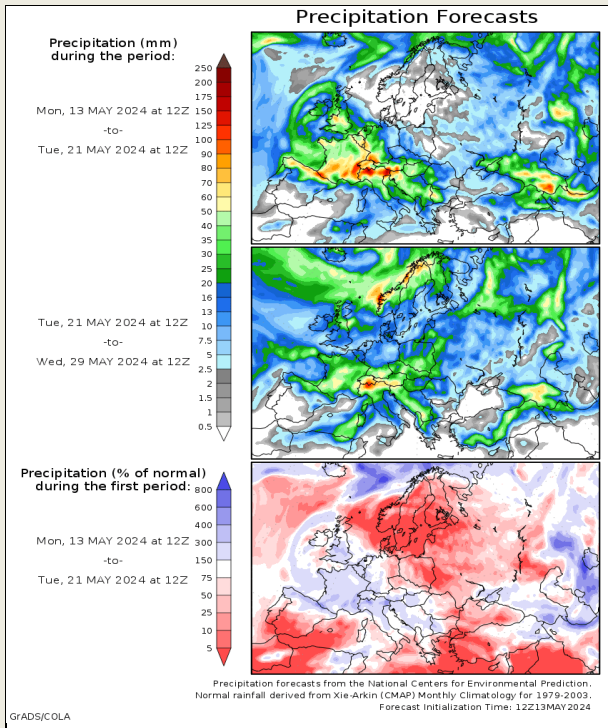


DISCLAIMER: This report has been prepared by AFGRI Broking, an authorized service provider and member of the JSE. This report is provided to you for information purposes only. AFGRI Broking hereby certify that the views expressed in this report were obtained from sources which AFGRI Broking consider to be reliable. AFGRI Broking do not make any representations or give any guarantees or warranties, expressed or implied, as to the correctness, accuracy or completeness of the report. Neither AFGRI Broking, nor any affiliate, nor any of their respective officers, directors, partners or employees, shall assume any liability for any losses arising from errors or omissions in the opinions, forecasts or information, irrespective of whether there has been any negligence by AFGRI Broking or its respective officers, directors, partners or employees, regardless of whether such damages were foreseen or unforeseen. The information contained in this report is confidential and may be subject to legal privilege. This report is not intended to not should it be taken to create any legal relations or contractual relations.

Europe, New Zealand and Australia - Weather

EUROPE : A large storm system will become stalled over parts of central and Western Europe this week due to atmospheric blocking. This will lead to a significant amount of rain that occurs from France and far northern Spain into southern Germany and the northwestern Balkan Countries. There is concern of flooding as a result of this rain, especially in France where some of the greatest topsoil moisture is, and fieldwork delays will result.

AUSTRALIA : Limited shower activity in the first week of the outlook will be good for fieldwork advancement in eastern production areas of the region; however, greater rainfall continues to be needed in southern production areas, especially in South Australia and interior Western Australia where soil conditions are driest. Past



DISCLAIMER: This report has been prepared by AFGRI Broking, an authorized service provider and member of the JSE. This report is provided to you for information purposes only. AFGRI Broking hereby certify that the views expressed in this report were obtained from sources which AFGRI Broking consider to be reliable. AFGRI Broking do not make any representations or give any guarantees or warranties, expressed or implied, as to the correctness, accuracy or completeness of the report. Neither AFGRI Broking, nor any affiliate, nor any of their respective officers, directors, partners or employees, shall assume any liability for any losses arising from errors or omissions in the opinions, forecasts or information, irrespective of whether there has been any negligence by AFGRI Broking or its respective officers, directors, partners or employees, regardless of whether such damages were foreseen or unforeseen. The information contained in this report is confidential and may be subject to legal privilege. This report is not intended to not should it be taken to create any legal relations or contractual relations.