



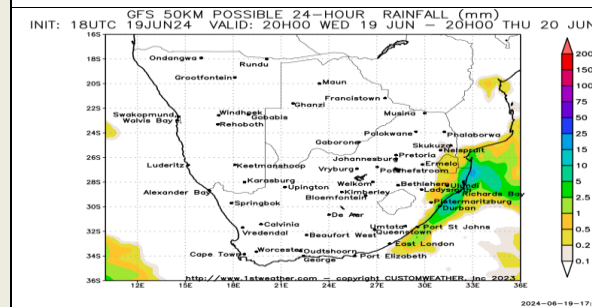
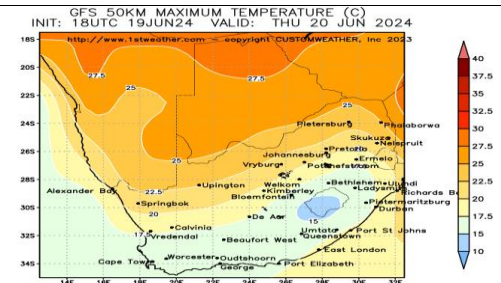
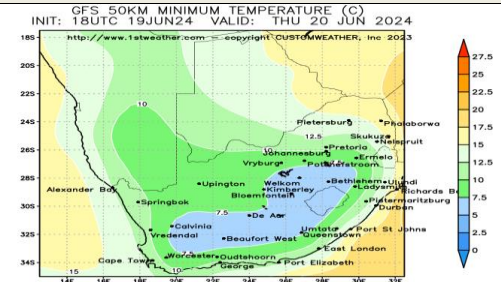
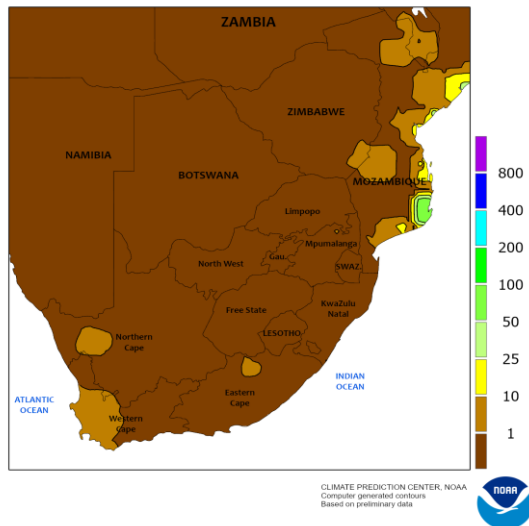
Weather Report

20 June 2024

South Africa - Weather

SOUTH AFRICA : South Africa will remain dry or mostly dry through the middle of next week. Harvesting and general fieldwork will advance with few disruptions in much of eastern and central South Africa. Late-season winter wheat planting will also continue in Western Cape, Northern Cape, and Free State. Wheat prospects are generally favorable, though Free State would welcome rain late this month into July. South Africa will generally trend dry or mostly dry through the middle of next week. Frontal boundaries will still generate light rain in Western Cape, Eastern Cape, and Natal today into Wednesday and again over the weekend into early next week. Most locations will not receive enough rain to counter evaporation. South Africa will remain drier biased June 20 – 26. However, areas near and along the southern coast will still have opportunities for light rain.

SOUTH AFRICA
Total Precipitation(mm)
June 9 - 15, 2024



Precipitation Forecasts

Precipitation (mm)
during the period:

Wed, 19 JUN 2024 at 12Z
-to-
Thu, 27 JUN 2024 at 12Z

Thu, 27 JUN 2024 at 12Z
-to-
Fri, 05 JUL 2024 at 12Z

Precipitation (% of normal)
during the first period:

Wed, 19 JUN 2024 at 12Z
-to-
Thu, 27 JUN 2024 at 12Z

Precipitation forecasts from the National Centers for Environmental Prediction.
Normal rainfall derived from Xie-Arkin (CMAP) Monthly Climatology for 1979-2003.
Forecast Initialization Time: 12Z19JUN2024

GRADS/COLA

Temperature Forecasts

Mean Surface Temperature (°C)
during the period:

Wed, 19 JUN 2024 at 12Z
-to-
Thu, 27 JUN 2024 at 12Z

Thu, 27 JUN 2024 at 12Z
-to-
Fri, 05 JUL 2024 at 12Z

Temperature Anomaly
during the first period:

Wed, 19 JUN 2024 at 12Z
-to-
Thu, 27 JUN 2024 at 12Z

Temperature forecasts from the National Centers for Environmental Prediction.
Normal Temperature derived from CRU monthly climatology for 1901-2000.
Forecast Initialization Time: 12Z19JUN2024

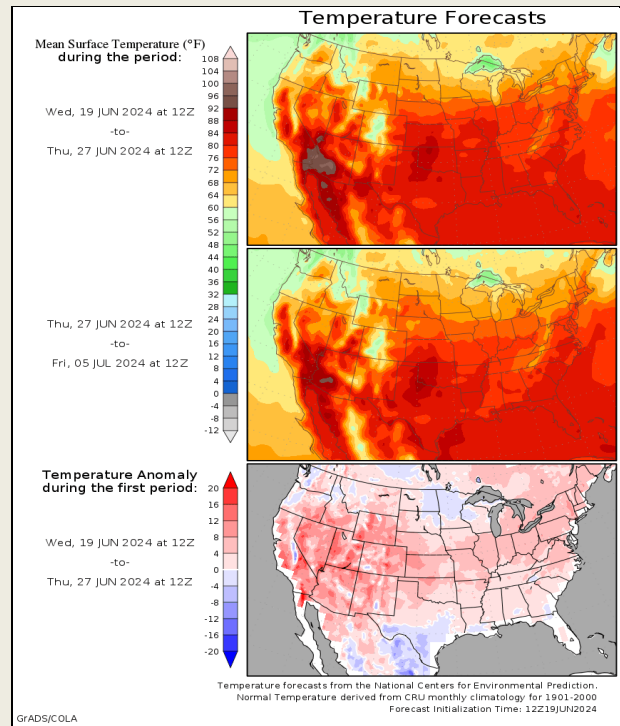
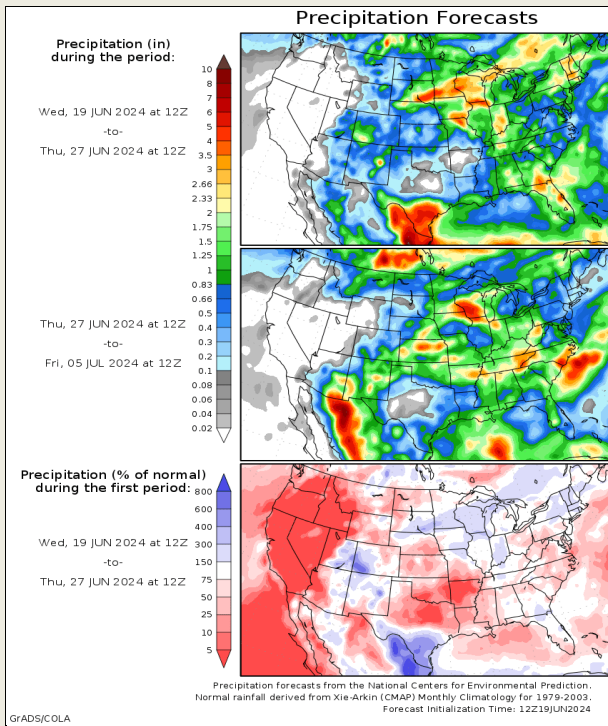
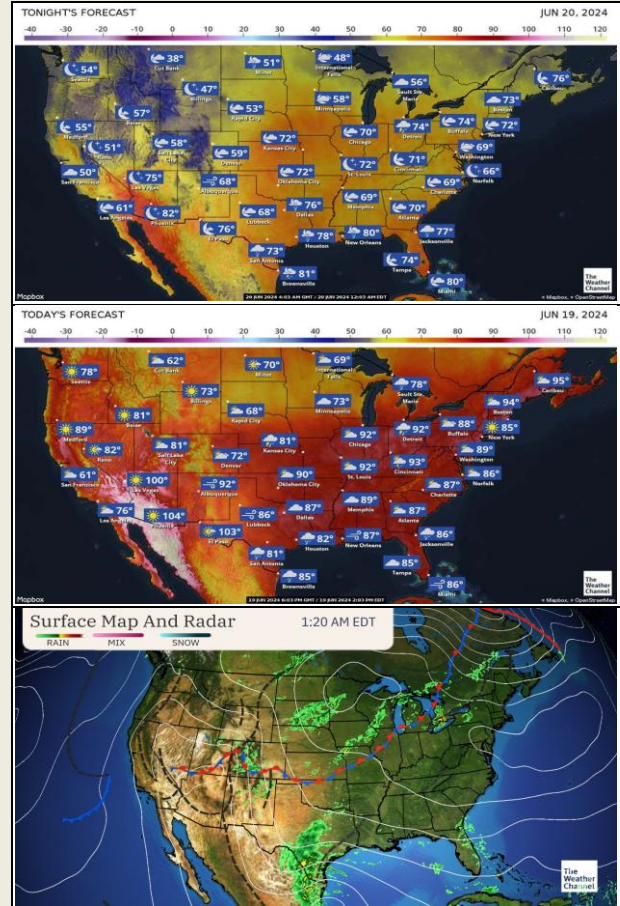
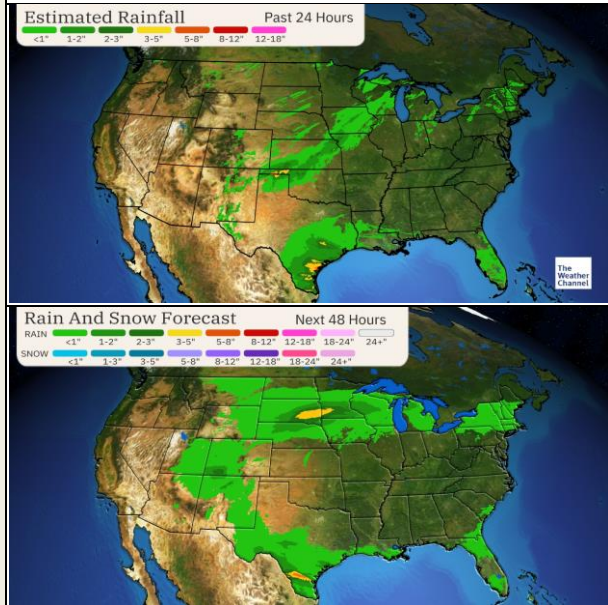
GRADS/COLA

DISCLAIMER: This report has been prepared by AFGRI Broking, an authorized service provider and member of the JSE. This report is provided to you for information purposes only. AFGRI Broking hereby certifies that the views expressed in this report were obtained from sources which AFGRI Broking considers to be reliable. AFGRI Broking does not make any representations or give any guarantees or warranties, expressed or implied, as to the correctness, accuracy or completeness of the report. Neither AFGRI Broking, nor any affiliate, nor any of their respective officers, directors, partners or employees, shall assume any liability for any losses arising from errors or omissions in the opinions, forecasts or information, irrespective of whether there has been any negligence by AFGRI Broking or its respective officers, directors, partners or employees, regardless of whether such damages were foreseen or unforeseen. The information contained in this report is confidential and may be subject to legal privilege. This report is not intended to be taken to create any legal relations or contractual relations.

United States of America - Weather

U.S. MIDWEST : More sunshine than rain will occur during the next two weeks outside of the northwestern Corn Belt and planting should soon be completed in much of the region while most areas from east-central Kansas to the eastern Corn Belt dry down significantly. o Enough soil moisture is in place today to favorably support crop development during the next two weeks with a growing need for rain late in the month, especially from east-central Kansas to the eastern Corn Belt.

U.S. DELTA : The Delta and the Southeast will see much more sunshine than rain during the next two weeks and planting should soon be completed in much of the region while soil moisture in place keeps conditions for favorable for most crops. o The drying expected will lead to a growing need for rain late this month with Georgia needing rain first as the topsoil moisture there is already short while other areas have a moister soil profile.



DISCLAIMER: This report has been prepared by AFGRI Broking, an authorized service provider and member of the JSE. This report is provided to you for information purposes only. AFGRI Broking hereby certify that the views expressed in this report were obtained from sources which AFGRI Broking consider to be reliable. AFGRI Broking do not make any representations or give any guarantees or warranties, expressed or implied, as to the correctness, accuracy or completeness of the report. Neither AFGRI Broking, nor any affiliate, nor any of their respective officers, directors, partners or employees, shall assume any liability for any losses arising from errors or omissions in the opinions, forecasts or information, irrespective of whether there has been any negligence by AFGRI Broking or its respective officers, directors, partners or employees, regardless of whether such damages were foreseen or unforeseen. The information contained in this report is confidential and may be subject to legal privilege. This report is not intended to not should it be taken to create any legal relations or contractual relations.

South America - Weather

BRAZIL: Outside of some light showers in northeastern Brazil, mostly dry weather will occur through Thursday in Brazil and Paraguay where harvesting should advance well while stress to immature Safrinha corn increases in the drier areas in Mato Grosso do Sul. o Safrinha corn from southern Paraguay to Parana and nearby Sao Paulo should have enough soil moisture to develop favorably through the next two weeks while the soil is short of moisture further to the north where most of the crop is maturing or being harvested.

ARGENTINA : Argentina will see isolated to scattered and mostly light showers most days through the next week and one round of organized rain Thursday into Sunday with fieldwork likely to advance well around the rain while the moisture will be beneficial in winter wheat areas. o Much of the shower activity during the next two weeks and rain Thursday into Sunday will occur outside of west-central and northwestern Argentina.

-2.0° -1.0° 0° 1.0° 2.0° 3.0° 4.0° (C)

10 20 30 40 50 60 70 80 90 (%)

Precipitation Forecasts

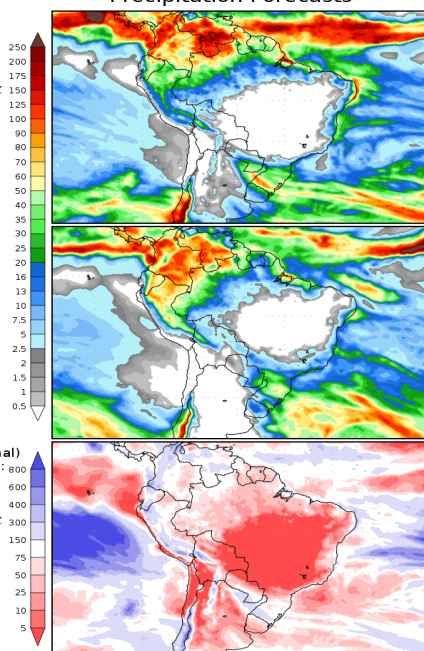
Precipitation (mm) during the period:

Wed, 19 JUN 2024 at 12Z
-to-
Thu, 27 JUN 2024 at 12Z

Thu, 27 JUN 2024 at 12Z
-to-
Fri, 05 JUL 2024 at 12Z

Precipitation (% of normal) during the first period:

Wed, 19 JUN 2024 at 12Z
-to-
Thu, 27 JUN 2024 at 12Z



Precipitation forecasts from the National Centers for Environmental Prediction.
Normal rainfall derived from Xie-Arkin (CMAP) Monthly Climatology for 1979-2003.
Forecast Initialization Time: 12Z19JUN2024

GRADS/COLA

Temperature Forecasts

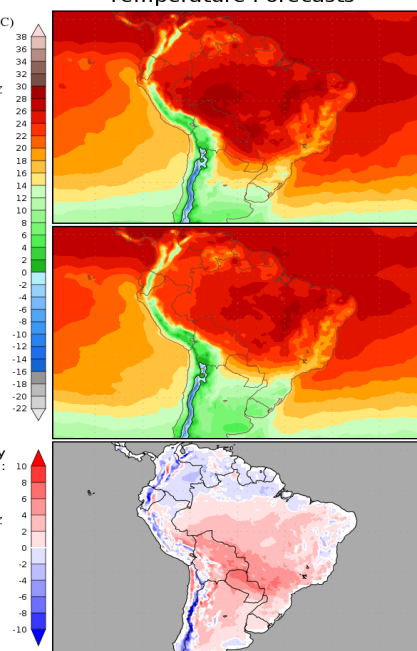
Mean Surface Temperature (°C) during the period:

Wed, 19 JUN 2024 at 12Z
-to-
Thu, 27 JUN 2024 at 12Z

Thu, 27 JUN 2024 at 12Z
-to-
Fri, 05 JUL 2024 at 12Z

Temperature Anomaly during the first period:

Wed, 19 JUN 2024 at 12Z
-to-
Thu, 27 JUN 2024 at 12Z



Temperature forecasts from the National Centers for Environmental Prediction.
Normal Temperature derived from CRU monthly climatology for 1901-2000
Forecast Initialization Time: 12Z19JUN2024

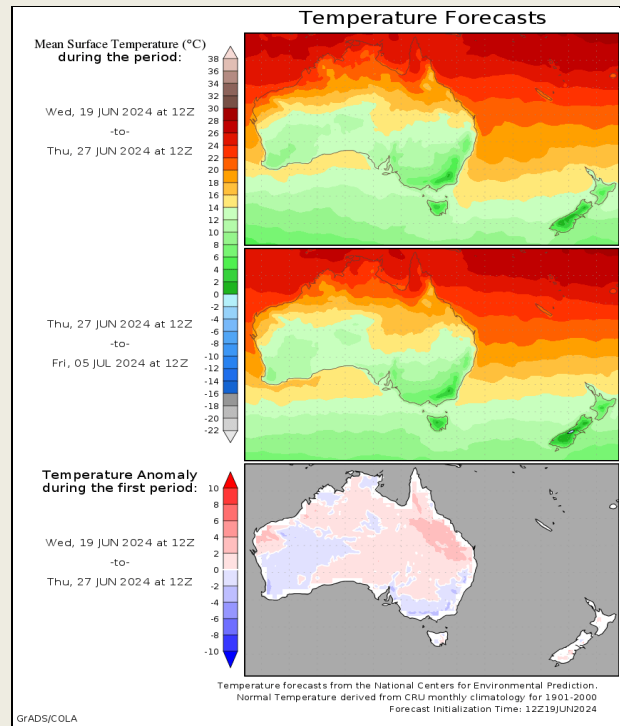
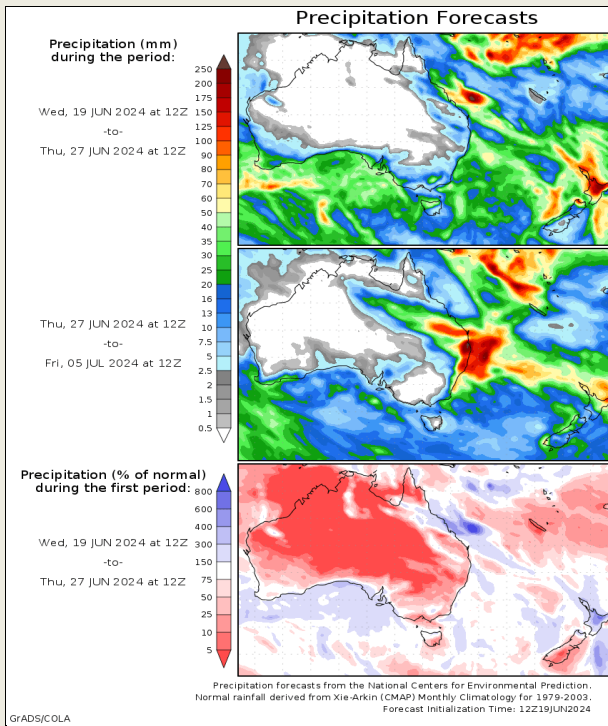
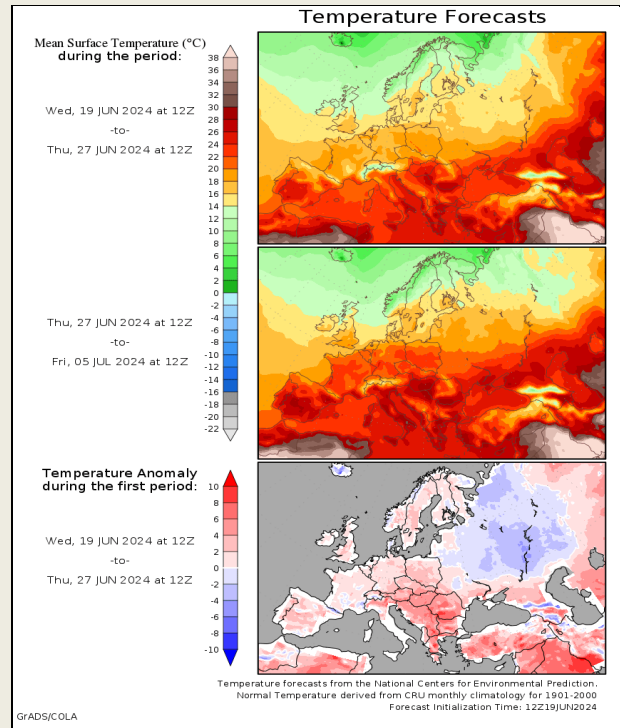
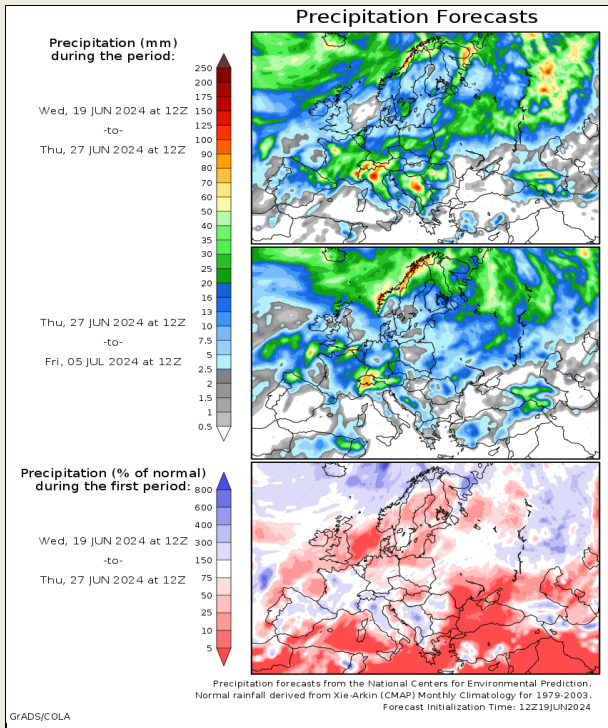
GRADS/COLA

DISCLAIMER: This report has been prepared by AFGRI Broking, an authorized service provider and member of the JSE. This report is provided to you for information purposes only. AFGRI Broking hereby certify that the views expressed in this report were obtained from sources which AFGRI Broking consider to be reliable. AFGRI Broking do not make any representations or give any guarantees or warranties, expressed or implied, as to the correctness, accuracy or completeness of the report. Neither AFGRI Broking, nor any affiliate, nor any of their respective officers, directors, partners or employees, shall assume any liability for any losses arising from errors or omissions in the opinions, forecasts or information, irrespective of whether there has been any negligence by AFGRI Broking or its respective officers, directors, partners or employees, regardless of whether such damages were foreseen or unforeseen. The information contained in this report is confidential and may be subject to legal privilege. This report is not intended to not should it be taken to create any legal relations or contractual relations.

Europe, New Zealand and Australia - Weather

EUROPE : A large, slow-moving storm system will continue to promote significant rainfall in the region this week. Fieldwork delays and some areas of flooding will likely result from the rain in central Europe, possibly extending southeast into the Balkan Countries. Portugal and central and southern Spain will be driest with a rising need for more rain.

AUSTRALIA : Western Australia will still receive some additional beneficial rainfall in the next seven days. Some beneficial shower activity will also occur in southeastern South Australia; though, much more rain will be needed. Queensland and northern New South Wales will be driest with very little to no rain.



DISCLAIMER: This report has been prepared by AFGRI Broking, an authorized service provider and member of the JSE. This report is provided to you for information purposes only. AFGRI Broking hereby certify that the views expressed in this report were obtained from sources which AFGRI Broking consider to be reliable. AFGRI Broking do not make any representations or give any guarantees or warranties, expressed or implied, as to the correctness, accuracy or completeness of the report. Neither AFGRI Broking, nor any affiliate, nor any of their respective officers, directors, partners or employees, shall assume any liability for any losses arising from errors or omissions in the opinions, forecasts or information, irrespective of whether there has been any negligence by AFGRI Broking or its respective officers, directors, partners or employees, regardless of whether such damages were foreseen or unforeseen. The information contained in this report is confidential and may be subject to legal privilege. This report is not intended to not should it be taken to create any legal relations or contractual relations.