

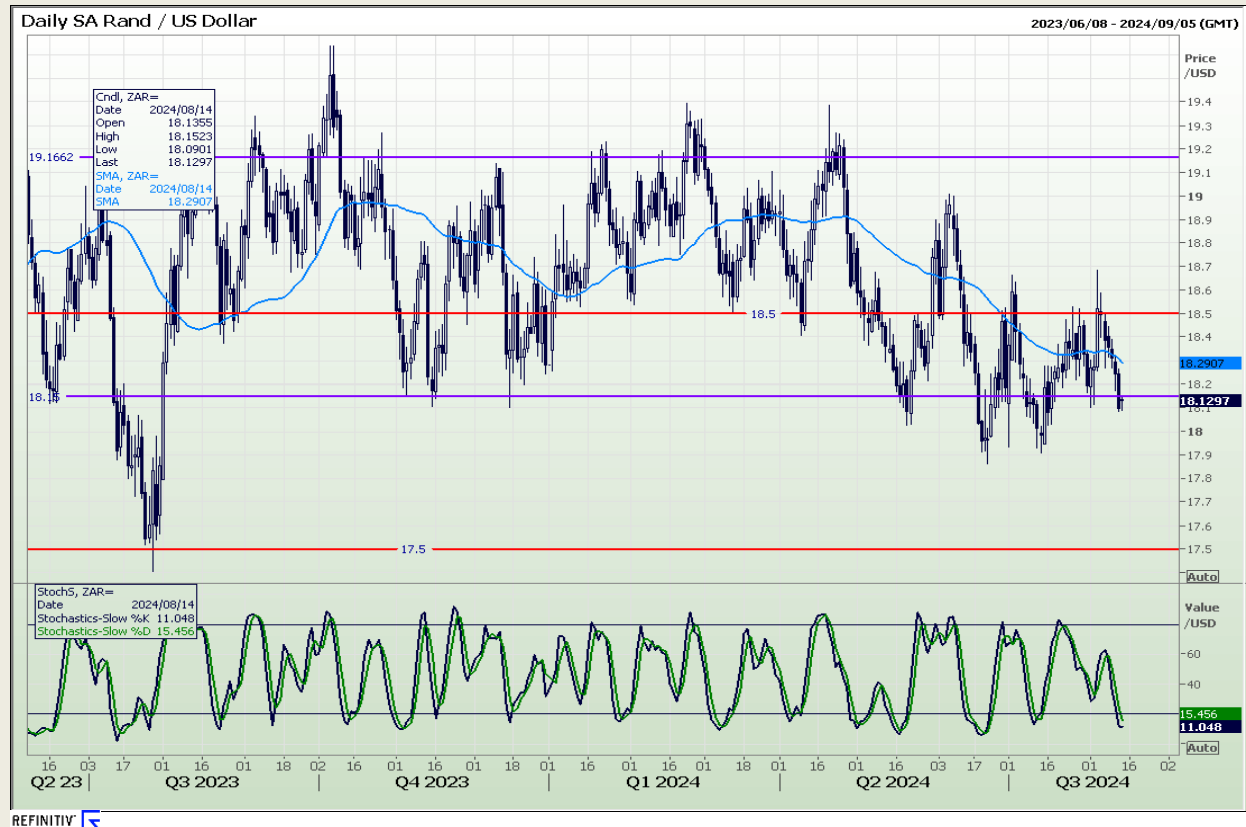
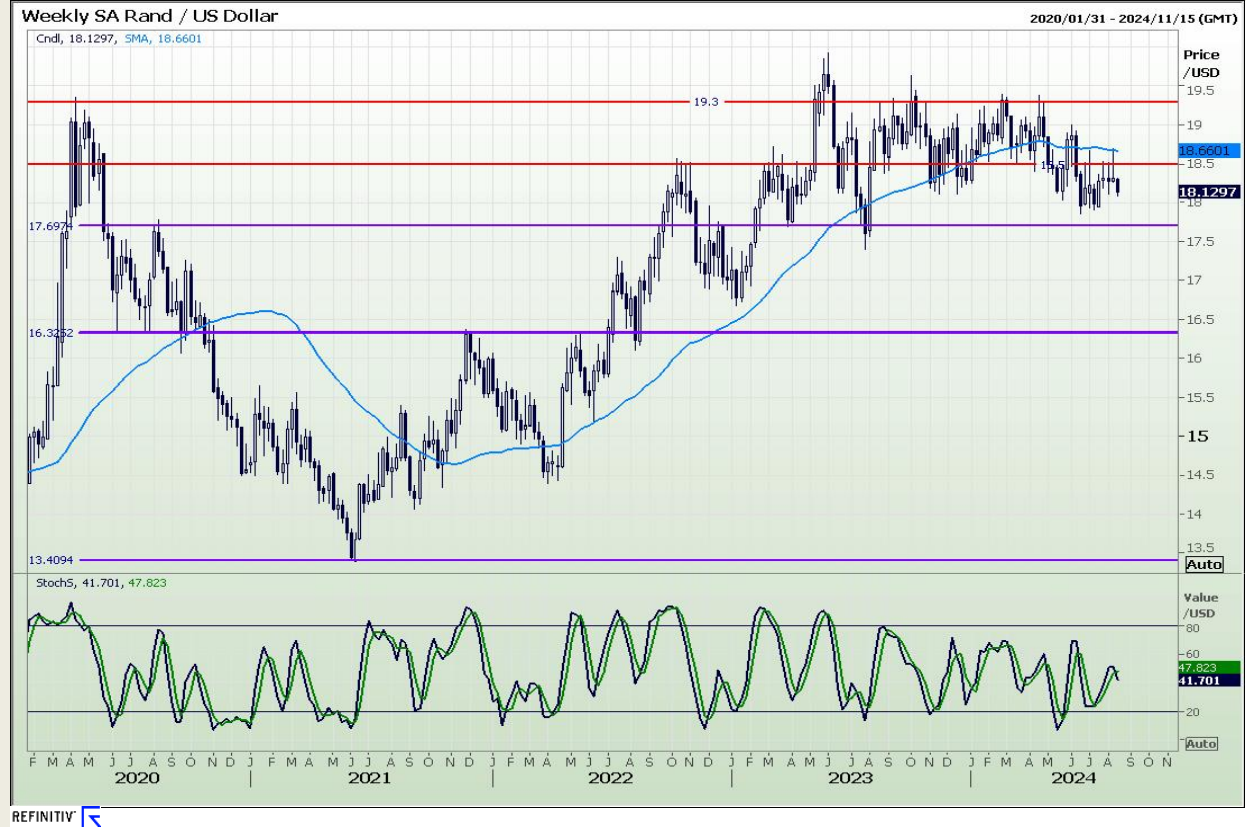


Technical Report

14 August 2024

Technical Analysis

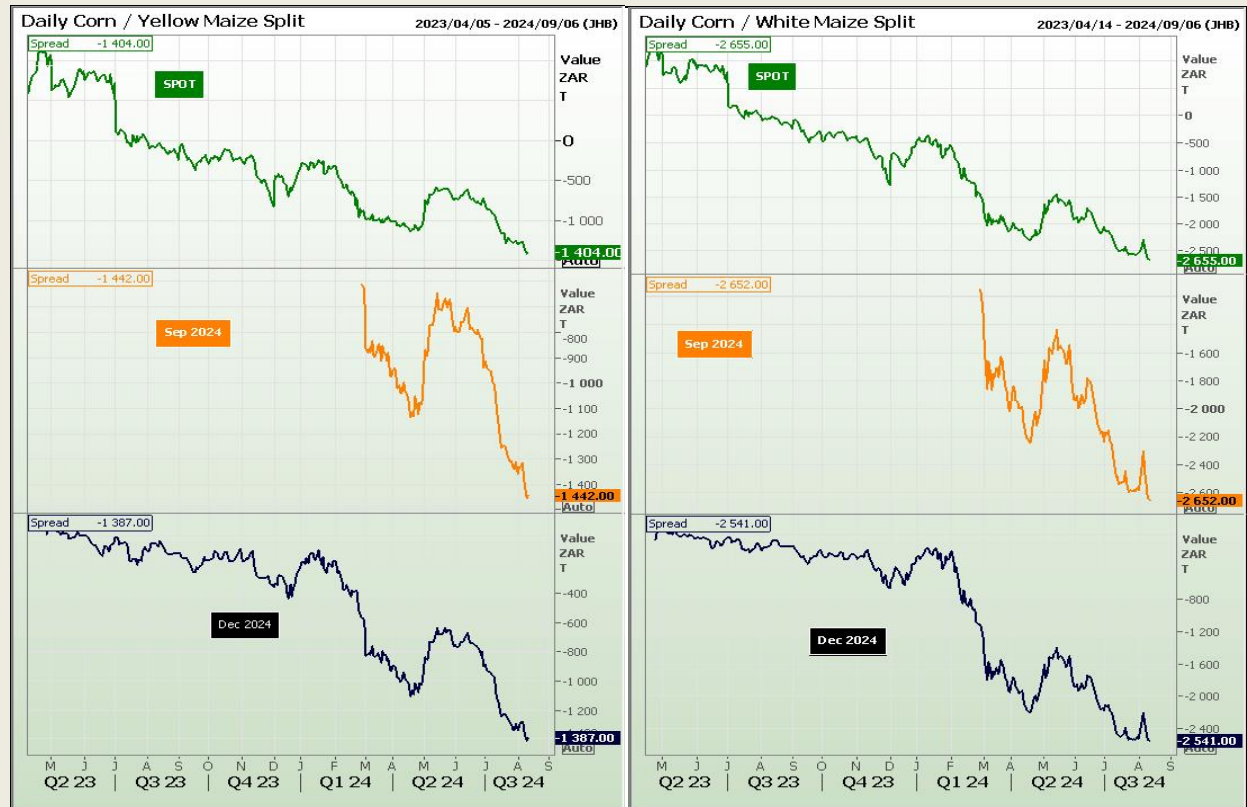
Rand / US Dollar



DISCLAIMER: This report has been prepared by AFGRI Broking, an authorized service provider and member of the JSE. This report is provided to you for information purposes only. AFGRI Broking hereby certify that the views expressed in this report were obtained from sources which AFGRI Broking consider to be reliable. AFGRI Broking do not make any representations or give any guarantees or warranties, expressed or implied, as to the correctness, accuracy or completeness of the report. Neither AFGRI Broking, nor any affiliate, nor any of their respective officers, directors, partners or employees, shall assume any liability for any losses arising from errors or omissions in the opinions, forecasts or information, irrespective of whether there has been any negligence by AFGRI Broking or its respective officers, directors, partners or employees, regardless of whether such damages were foreseen or unforeseen. The information contained in this report is confidential and may be subject to legal privilege. This report is not intended to not should it be taken to create any legal relations or contractual relations.

Technical Analysis

CBOT / SAFEX Spreads



DISCLAIMER: This report has been prepared by AFGRI Broking, an authorized service provider and member of the JSE. This report is provided to you for information purposes only. AFGRI Broking hereby certify that the views expressed in this report were obtained from sources which AFGRI Broking consider to be reliable. AFGRI Broking do not make any representations or give any guarantees or warranties, expressed or implied, as to the correctness, accuracy or completeness of the report. Neither AFGRI Broking, nor any affiliate, nor any of their respective officers, directors, partners or employees, shall assume any liability for any losses arising from errors or omissions in the opinions, forecasts or information, irrespective of whether there has been any negligence by AFGRI Broking or its respective officers, directors, partners or employees, regardless of whether such damages were foreseen or unforeseen. The information contained in this report is confidential and may be subject to legal privilege. This report is not intended to not should it be taken to create any legal relations or contractual relations.

Technical Analysis

Chicago Board of Trade - Corn



DISCLAIMER: This report has been prepared by AFGRI Broking, an authorized service provider and member of the JSE. This report is provided to you for information purposes only. AFGRI Broking hereby certify that the views expressed in this report were obtained from sources which AFGRI Broking consider to be reliable. AFGRI Broking do not make any representations or give any guarantees or warranties, expressed or implied, as to the correctness, accuracy or completeness of the report. Neither AFGRI Broking, nor any affiliate, nor any of their respective officers, directors, partners or employees, shall assume any liability for any losses arising from errors or omissions in the opinions, forecasts or information, irrespective of whether there has been any negligence by AFGRI Broking or its respective officers, directors, partners or employees, regardless of whether such damages were foreseen or unforeseen. The information contained in this report is confidential and may be subject to legal privilege. This report is not intended to not should it be taken to create any legal relations or contractual relations.

Technical Analysis

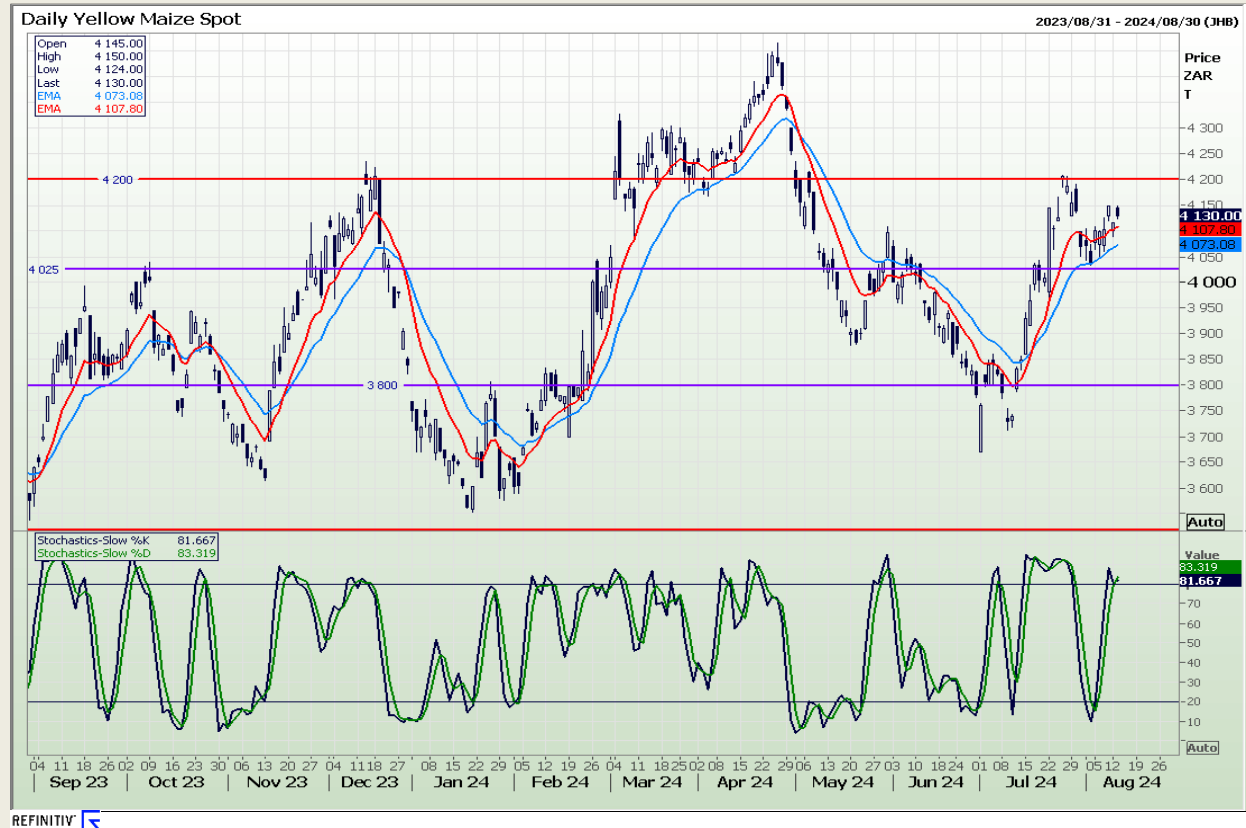
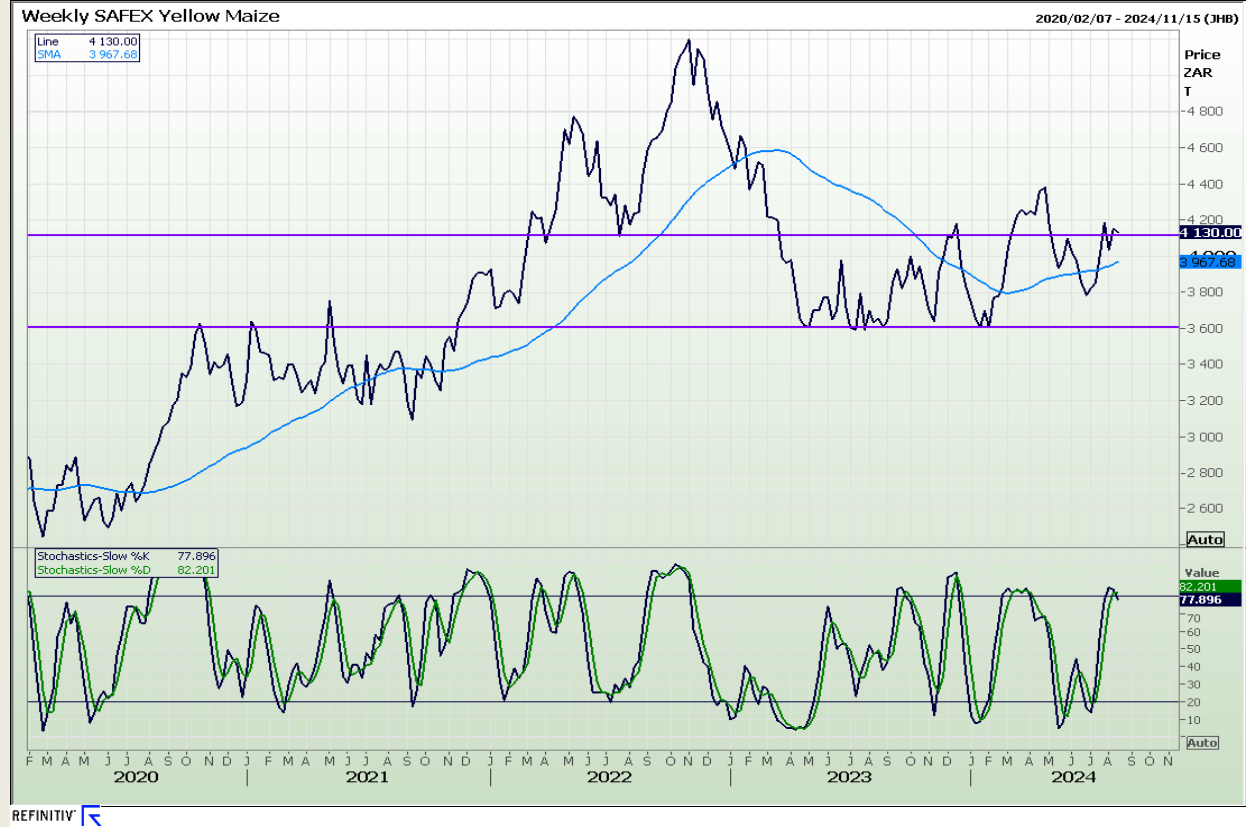
South African Futures Exchange - Maize



DISCLAIMER: This report has been prepared by AFGRI Broking, an authorized service provider and member of the JSE. This report is provided to you for information purposes only. AFGRI Broking hereby certify that the views expressed in this report were obtained from sources which AFGRI Broking consider to be reliable. AFGRI Broking do not make any representations or give any guarantees or warranties, expressed or implied, as to the correctness, accuracy or completeness of the report. Neither AFGRI Broking, nor any affiliate, nor any of their respective officers, directors, partners or employees, shall assume any liability for any losses arising from errors or omissions in the opinions, forecasts or information, irrespective of whether there has been any negligence by AFGRI Broking or its respective officers, directors, partners or employees, regardless of whether such damages were foreseen or unforeseen. The information contained in this report is confidential and may be subject to legal privilege. This report is not intended to not should it be taken to create any legal relations or contractual relations.

Technical Analysis

South African Futures Exchange - Maize



DISCLAIMER: This report has been prepared by AFGRI Broking, an authorized service provider and member of the JSE. This report is provided to you for information purposes only. AFGRI Broking hereby certify that the views expressed in this report were obtained from sources which AFGRI Broking consider to be reliable. AFGRI Broking do not make any representations or give any guarantees or warranties, expressed or implied, as to the correctness, accuracy or completeness of the report. Neither AFGRI Broking, nor any affiliate, nor any of their respective officers, directors, partners or employees, shall assume any liability for any losses arising from errors or omissions in the opinions, forecasts or information, irrespective of whether there has been any negligence by AFGRI Broking or its respective officers, directors, partners or employees, regardless of whether such damages were foreseen or unforeseen. The information contained in this report is confidential and may be subject to legal privilege. This report is not intended to not should it be taken to create any legal relations or contractual relations.

Technical Analysis

South African Futures Exchange - Maize

Daily WHITE MAIZE SEP4

2023/10/23 - 2024/09/12 (JHB)



REFINITIV 

Daily CndI YELOW MAZE SEP4, StochS YELOW MAZE SEP4

2023/08/17 - 2024/08/30 (JHB)



REFINITIV 

DISCLAIMER: This report has been prepared by AFGRI Broking, an authorized service provider and member of the JSE. This report is provided to you for information purposes only. AFGRI Broking hereby certify that the views expressed in this report were obtained from sources which AFGRI Broking consider to be reliable. AFGRI Broking do not make any representations or give any guarantees or warranties, expressed or implied, as to the correctness, accuracy or completeness of the report. Neither AFGRI Broking, nor any affiliate, nor any of their respective officers, directors, partners or employees, shall assume any liability for any losses arising from errors or omissions in the opinions, forecasts or information, irrespective of whether there has been any negligence by AFGRI Broking or its respective officers, directors, partners or employees, regardless of whether such damages were foreseen or unforeseen. The information contained in this report is confidential and may be subject to legal privilege. This report is not intended to not should it be taken to create any legal relations or contractual relations.

Technical Analysis

Chicago Board of Trade and Kansas Board of Trade - Wheat

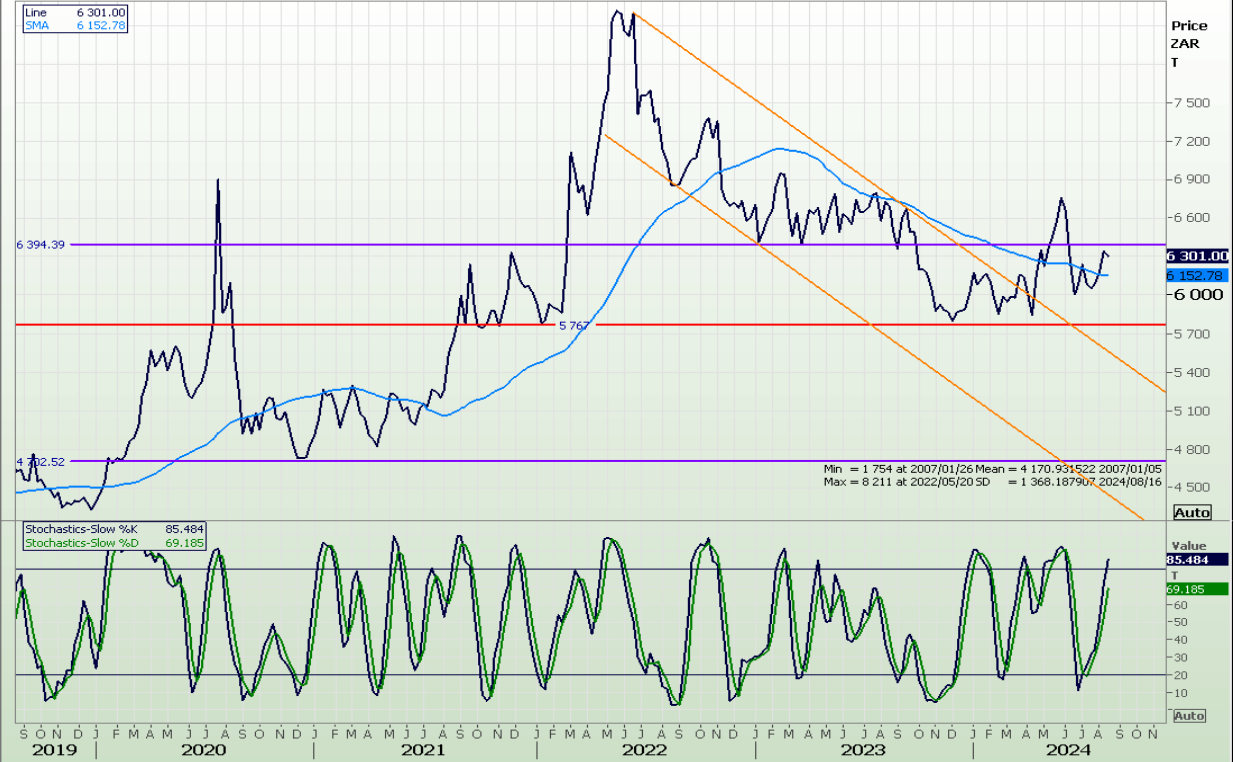


DISCLAIMER: This report has been prepared by AFGRI Broking, an authorized service provider and member of the JSE. This report is provided to you for information purposes only. AFGRI Broking hereby certify that the views expressed in this report were obtained from sources which AFGRI Broking consider to be reliable. AFGRI Broking do not make any representations or give any guarantees or warranties, expressed or implied, as to the correctness, accuracy or completeness of the report. Neither AFGRI Broking, nor any affiliate, nor any of their respective officers, directors, partners or employees, shall assume any liability for any losses arising from errors or omissions in the opinions, forecasts or information, irrespective of whether there has been any negligence by AFGRI Broking or its respective officers, directors, partners or employees, regardless of whether such damages were foreseen or unforeseen. The information contained in this report is confidential and may be subject to legal privilege. This report is not intended to not should it be taken to create any legal relations or contractual relations.

Technical Analysis

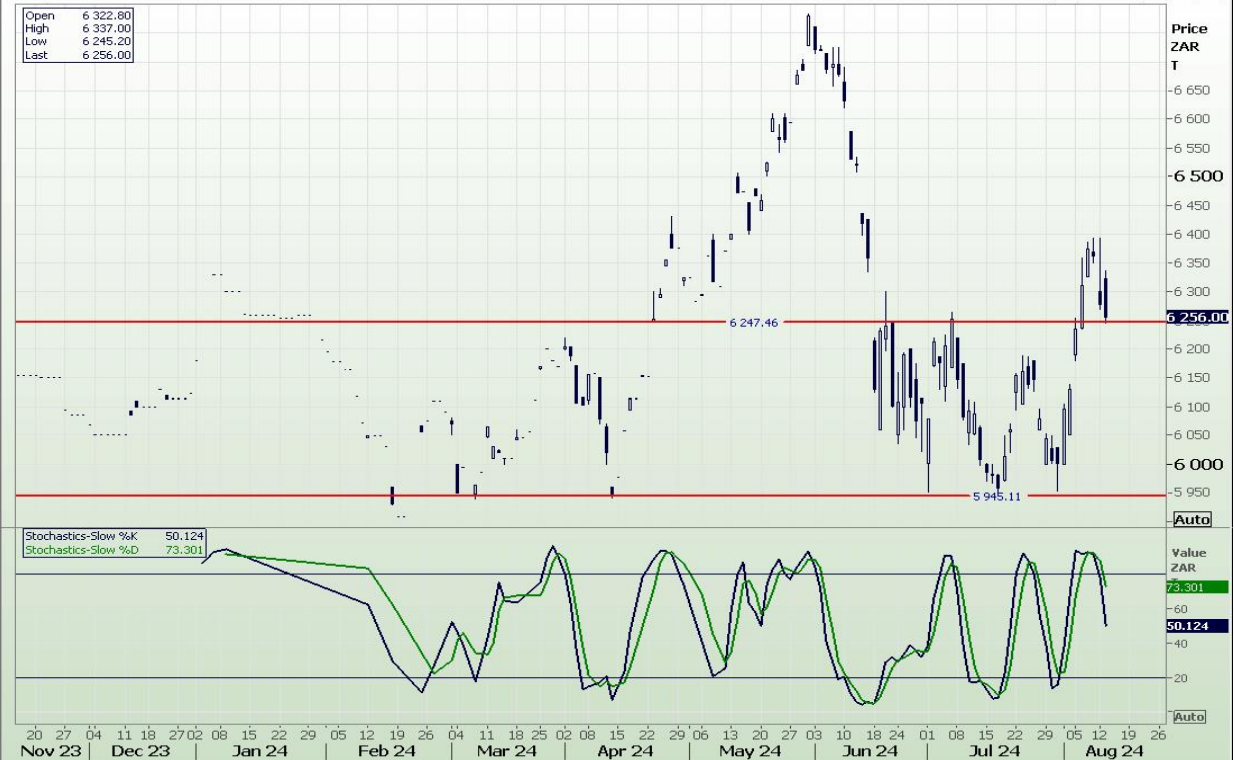
South African Futures Exchange - Wheat

Weekly SAFEX Wheat - Spot



REFINITIV

Daily WHEAT SEP4



REFINITIV

DISCLAIMER: This report has been prepared by AFGRI Broking, an authorized service provider and member of the JSE. This report is provided to you for information purposes only. AFGRI Broking hereby certify that the views expressed in this report were obtained from sources which AFGRI Broking consider to be reliable. AFGRI Broking do not make any representations or give any guarantees or warranties, expressed or implied, as to the correctness, accuracy or completeness of the report. Neither AFGRI Broking, nor any affiliate, nor any of their respective officers, directors, partners or employees, shall assume any liability for any losses arising from errors or omissions in the opinions, forecasts or information, irrespective of whether there has been any negligence by AFGRI Broking or its respective officers, directors, partners or employees, regardless of whether such damages were foreseen or unforeseen. The information contained in this report is confidential and may be subject to legal privilege. This report is not intended to not should it be taken to create any legal relations or contractual relations.

Technical Analysis

Chicago Board of Trade and Kansas Board of Trade - Wheat



REFINITIV 



REFINITIV 

DISCLAIMER: This report has been prepared by AFGRI Broking, an authorized service provider and member of the JSE. This report is provided to you for information purposes only. AFGRI Broking hereby certify that the views expressed in this report were obtained from sources which AFGRI Broking consider to be reliable. AFGRI Broking do not make any representations or give any guarantees or warranties, expressed or implied, as to the correctness, accuracy or completeness of the report. Neither AFGRI Broking, nor any affiliate, nor any of their respective officers, directors, partners or employees, shall assume any liability for any losses arising from errors or omissions in the opinions, forecasts or information, irrespective of whether there has been any negligence by AFGRI Broking or its respective officers, directors, partners or employees, regardless of whether such damages were foreseen or unforeseen. The information contained in this report is confidential and may be subject to legal privilege. This report is not intended to not should it be taken to create any legal relations or contractual relations.

Technical Analysis

Chicago Board of Trade - Soybeans

Weekly CBOT Soya Beans - Spot



REFINITIV 

Weekly SOYBEANS SEP24



REFINITIV 

DISCLAIMER: This report has been prepared by AFGRI Broking, an authorized service provider and member of the JSE. This report is provided to you for information purposes only. AFGRI Broking hereby certify that the views expressed in this report were obtained from sources which AFGRI Broking consider to be reliable. AFGRI Broking do not make any representations or give any guarantees or warranties, expressed or implied, as to the correctness, accuracy or completeness of the report. Neither AFGRI Broking, nor any affiliate, nor any of their respective officers, directors, partners or employees, shall assume any liability for any losses arising from errors or omissions in the opinions, forecasts or information, irrespective of whether there has been any negligence by AFGRI Broking or its respective officers, directors, partners or employees, regardless of whether such damages were foreseen or unforeseen. The information contained in this report is confidential and may be subject to legal privilege. This report is not intended to not should it be taken to create any legal relations or contractual relations.

Technical Analysis

South African Futures Exchange - Soybeans

Weekly SAFEX Soya Beans - Spot

2019/03/01 - 2024/11/29 (JHB)



REFINITIV

Daily SOYABEANS SEP4

2023/12/19 - 2024/08/26 (JHB)



REFINITIV

DISCLAIMER: This report has been prepared by AFGRI Broking, an authorized service provider and member of the JSE. This report is provided to you for information purposes only. AFGRI Broking hereby certify that the views expressed in this report were obtained from sources which AFGRI Broking consider to be reliable. AFGRI Broking do not make any representations or give any guarantees or warranties, expressed or implied, as to the correctness, accuracy or completeness of the report. Neither AFGRI Broking, nor any affiliate, nor any of their respective officers, directors, partners or employees, shall assume any liability for any losses arising from errors or omissions in the opinions, forecasts or information, irrespective of whether there has been any negligence by AFGRI Broking or its respective officers, directors, partners or employees, regardless of whether such damages were foreseen or unforeseen. The information contained in this report is confidential and may be subject to legal privilege. This report is not intended to not should it be taken to create any legal relations or contractual relations.

Technical Analysis

South African Futures Exchange - Sunflower

Weekly SAFEX Sunflower - Spot

2018/04/13 - 2024/12/20 (JHB)



REFINITIV

Daily SUNFLR SEED SEP4

2024/01/18 - 2024/08/22 (JHB)



REFINITIV

DISCLAIMER: This report has been prepared by AFGRI Broking, an authorized service provider and member of the JSE. This report is provided to you for information purposes only. AFGRI Broking hereby certify that the views expressed in this report were obtained from sources which AFGRI Broking consider to be reliable. AFGRI Broking do not make any representations or give any guarantees or warranties, expressed or implied, as to the correctness, accuracy or completeness of the report. Neither AFGRI Broking, nor any affiliate, nor any of their respective officers, directors, partners or employees, shall assume any liability for any losses arising from errors or omissions in the opinions, forecasts or information, irrespective of whether there has been any negligence by AFGRI Broking or its respective officers, directors, partners or employees, regardless of whether such damages were foreseen or unforeseen. The information contained in this report is confidential and may be subject to legal privilege. This report is not intended to not should it be taken to create any legal relations or contractual relations.